

Initiative to build institution-wide engagement

Local Food System Symposium

Bhavna Hirani

Office of Public Engagement

University of Illinois, Urbana-Champaign

September 29, 2015





Illinois was established as a land-grant institution to be a beacon of knowledge and service for our state and nation

Goal 3 of Strategic Plan 2013-16:

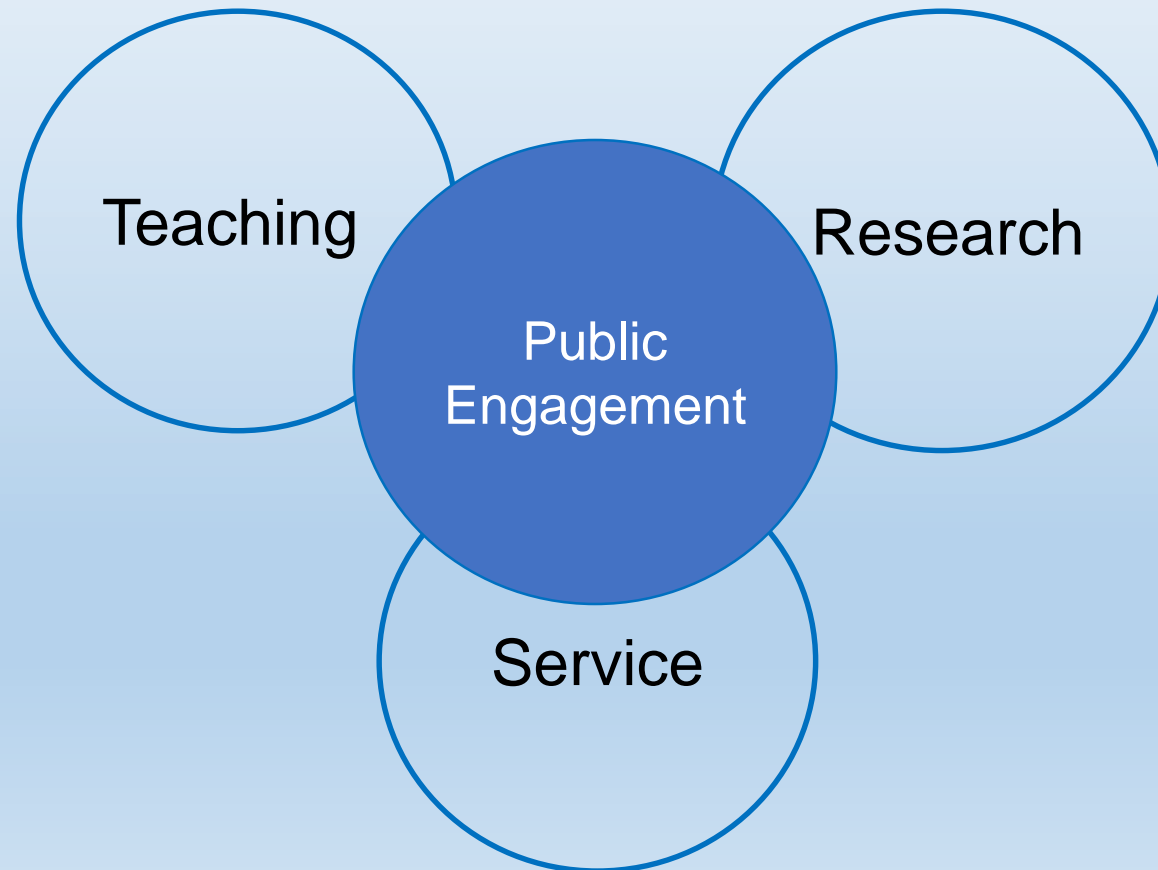
Make a significant and visible societal impact





Public engagement at Illinois

Application of institutional knowledge and resources to address and solve challenges facing the community through mutually-beneficial partnership with the community





Role of Office of Public Engagement at Illinois

1. Facilitate communication between University and community
2. Provide community-based learning and sharing opportunities
3. Provide financial and administrative support to campus engagement initiatives



Learning and sharing opportunities for engagement at Illinois

Colloquium



- Invited speakers present programs during school year
- Share stories of engagement programs across campus

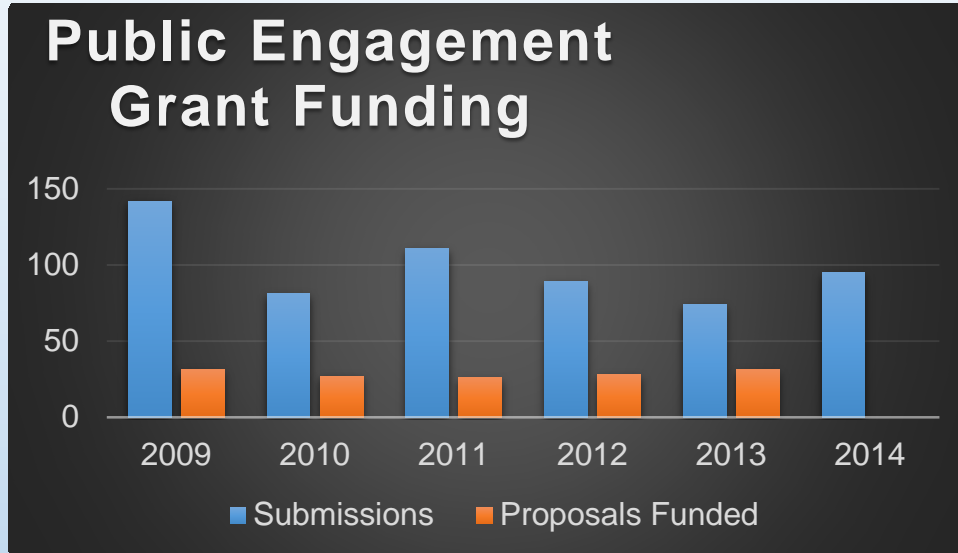
Symposium



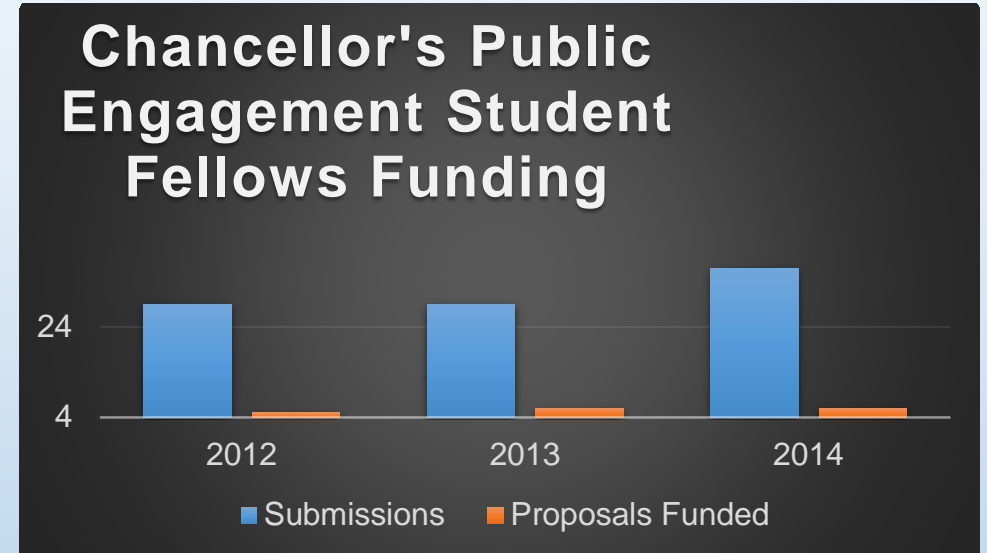
- Annual sharing of engagement projects across campus
- Discussions and collaborations among engaged scholars



Public Engagement grant funding



- Grants of up to \$20K
- \$1.5M for 113 programs
- \$0.25M for 30 programs in 2014



- Grants of up to \$1,500
- \$8,375 in 2015



Awards and Recognition for public engagement at Illinois



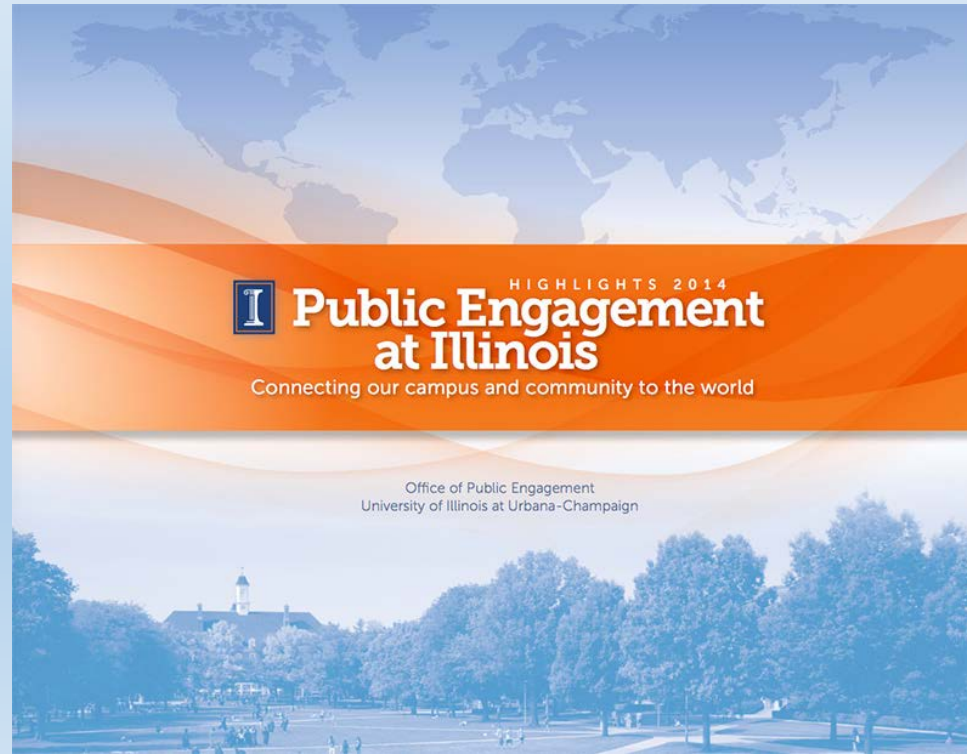
Award winners of 2015

- Campus Award for Excellence in Public Engagement (CAEPE)
- Annual recognition of engaged scholars includes faculty, staff and students



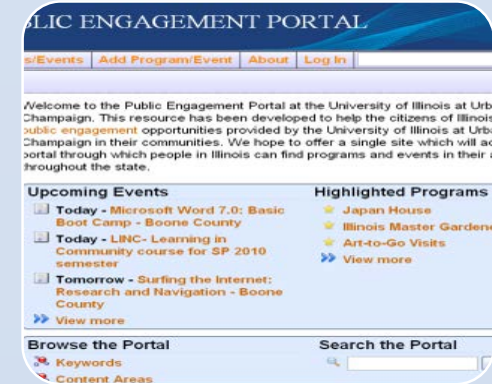
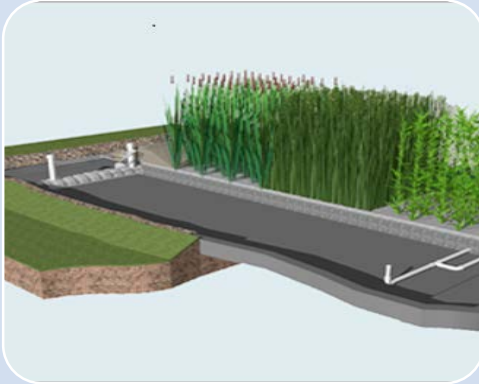
Publications – Engagement at Illinois

- eNewsletter (each semester)
- Highlights magazine (annual)





Engagement by numbers at Illinois



Research

Over 700
engagement
programs

Teaching

About 500
service-
learning
courses with
over 6,000
students
participating

Community partners

Over 200
community
partners in
collaboration
with the
University

Events

More than
6,000 events
listed on
Public
Engagement
Portal

Data collected in 2012-13



Challenge

Decentralized nature of department and college sponsored community-engagement projects

Goal

Encourage cross-disciplinary engagement projects





An effort to build institution-wide engagement at Illinois



Local Food System Symposium

Wednesday
October 22, 2014
8am – 12pm

SDRF building, 301 E. Gregory Drive
University of Illinois
publish.illinois.edu/local-food-system-symposium/



Hosted by the
Office of Public Engagement
engagement.illinois.edu/

Partners

University of Illinois Extension
web.extension.illinois.edu/state/index.cfm

Institute for Sustainability, Energy and Environment
sustainability.illinois.edu/

University Housing and Dining Services
housing.illinois.edu/Current/Dining/



Symposium Schedule

Time	Description
8:00-8:15am	Check-in (pick up name badge, brochure and refreshments)
8:15-8:45am	Opening remarks followed by an overview of the University's collaborative efforts in the area of local foods presented by faculty, staff and students
8:45-9:00am	Introduction to design process on local food system
9:00am-12:00pm	Implementation of design process in three phases: Discovery, Analysis and Action (with a break included)



For information contact:

Bhavna Hirani, Ph.D.
Program Coordinator
Office of Public Engagement
University of Illinois at Urbana-Champaign
807 S. Wright St.
Champaign, Illinois 61820
(217) 244-6042
bhavna@illinois.edu

Local Food System Symposium



- To boost partnerships and help the local economy
- Academicians, technicians and students from campus
- Producers, distributors and consumers from community
- Over 60 participants for 3 hour symposium

Multidisciplinary participation



Campus

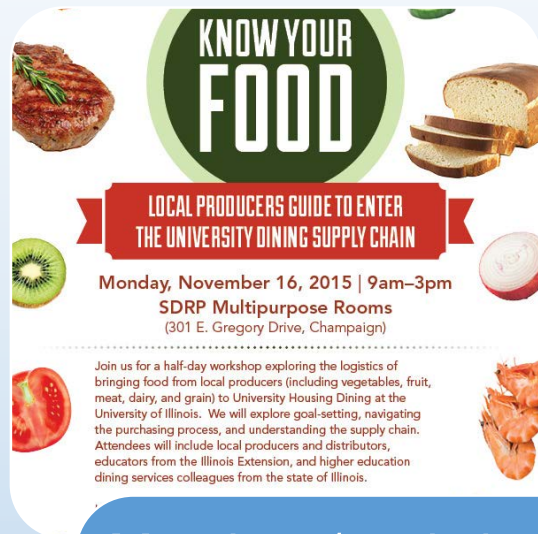
- Architecture
- Civil and Environmental Engineering
- College of Agricultural, Consumer and Environmental Sciences
- Crop Sciences
- Extension
- Food Sciences and Human Nutrition
- Hendrick House
- Institute for Sustainability, Energy & Environment
- Sustainable Student Farm
- University Dining
- Urban and Regional Planning

Community

- The Land Connection
- Illinois Stewardship Alliance
- Illinois Environmental Council
- Illinois Farm Bureau
- Quad Cities Food Hub
- Spence Farm Foundation
- Commerce and Economic Development, Farm Bureau
- United States Department of Agriculture
- Common Ground Food Co-op
- Farmer's Market in Urbana
- Unit 4 School District
- Central Illinois Produce



Design approach



Small groups identify producers, consumers and market-makers

- Definition
- Type
- Needs
- Availability
- Bring changes

Discussion on resulting topics within groups of interest

- Changes needed
- Barriers identified
- New systems
- Responsible entity
- Champions

Meetings/workshops on gaps identified

- Value-added processing
- Dining Services – workshop
- Interdisciplinary grant proposals

Example 1



15 Extension Educators
across the State of
Illinois form the Small
Farms/Local Foods Team



University of Illinois Extension

University of Illinois
Small Farms/Local Foods Team





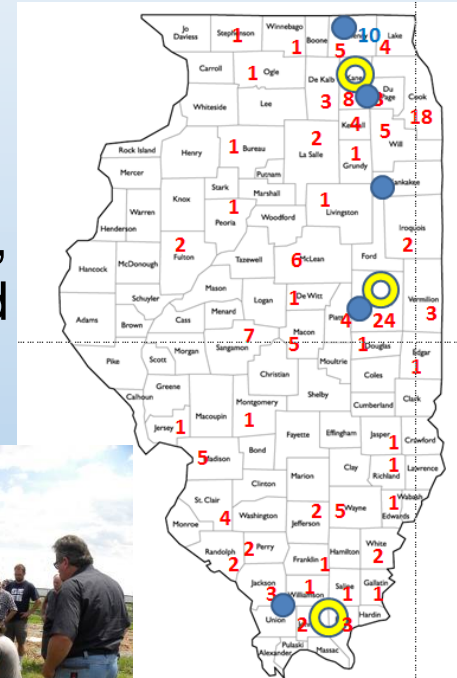
University of Illinois Extension

Outreach and Engagement channels

- Direct technical assistance
- Electronic communication
- Local, regional and state-wide programming including field days and web based learning opportunities
- Mentoring opportunities
- Beginning farmer training



Example 2



-

Example 3



Illinois School of Architecture



- Graduate architectural design studio
- Design and building of infrastructure for Sustainable Student Farm
- Designs for deployable farm stands
- Design and build efficient wash/pack pavilion on site using sustainable materials





Department of Crop Sciences

- Community Engagement in the Urban Agriculture Research Lab
- Urban cropping systems research
- Cover crop and organic “weed blasting” research
- Urban soil remediation and management research
- Service learning projects for students in HORT 435



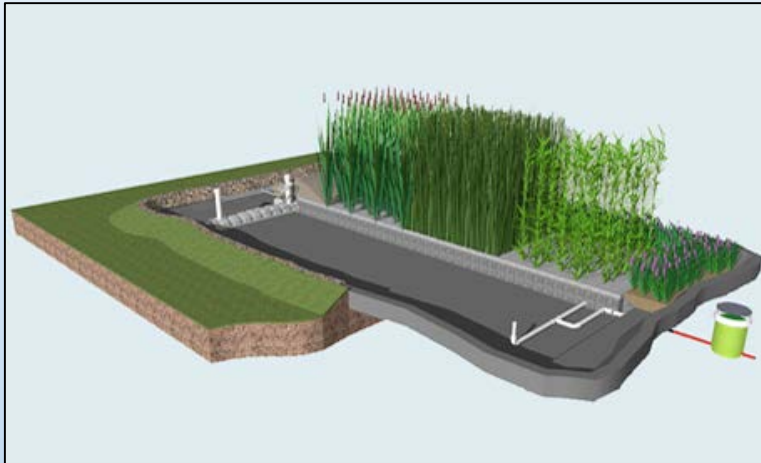


Community and economic development

- Chanute Air Force Base closure impacted the community
- Village of Rantoul uses food and agriculture as means of economic development
- Food hub and farm incubator launched in the community
- University staff serve as leaders on committees to coordinate development in the area
- University staff works with city and state organizations in the process

Design of an ecological water treatment system

Design for system on-site



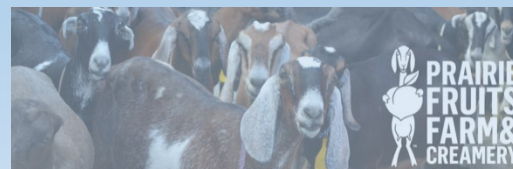
www.biohabitats.com/engage

Educational materials for farm tours



www.prairiefruits.com/farm-tours

- Student researchers from **Civil and Environmental Engineering** characterized wastewater streams on a local farm and used it to design an ecological water treatment system
- Students helped develop educational materials for an immersion school for farmers





Impact of symposium on institution-wide engagement

1. Discussion on use of resources available on campus

- Department of Food Science and Human Nutrition

- Use of pilot processing plant on campus for
 - i. Instruction on value-added processing to community
 - ii. Research on processing of grains for quality and nutrition

- College of Agriculture

- Develop low-cost micro-equipment for processing

- Illinois School of Architecture

- Design and create tools for efficient sorting/grading/packing of local food



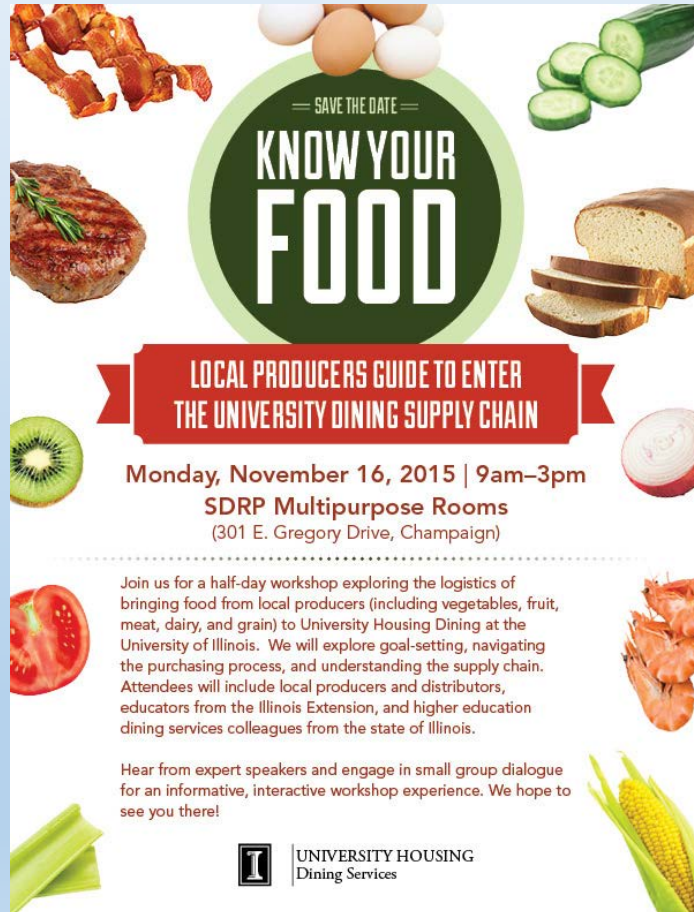
Impact of symposium on institution-wide engagement

2. Interdisciplinary grant proposals between Illinois Extension and College of Agriculture, Consumer and Environmental Sciences
 - National Institute of Food and Agriculture (USDA) to study alternate protein sources in dining options
3. Interactive workshop by University Dining Services
 - Guide local producers to logistics of entering dining supply chain



Workshop by University Dining Services

Informative and interactive



- Explore the Dining Services at Illinois and at other State Universities
- Navigate through the purchasing process
- Understand the supply chain
- Share experience of local producers and distributors



Strengthening relationship with Colleges and Institutes to broaden engagement at Illinois

- Meetings with engagement representatives
- Mutual understanding of community engagement
- Share information on engagement efforts
- Delegate contacts for future communication
- Develop interaction to support engagement
- Identify connections across disciplines



Results of engagement meetings at Illinois

- Good participation of units in public engagement programs
- All units use Engagement Portal to share activities and programs with the community
- Increase visibility of engagement staff by presence in meetings of colleges
- Encourage engaged scholars by
 - Letters of recognition to Deans and Department heads, even a reception with all of the above
 - A list of engaged scholars
- Organize engagement workshops for faculty, academic professionals and students
- Engagement map or flowchart for community partners to navigate contacts
- Web form for faculty/staff to connect with external partners



Future of engagement at Illinois

- Local Food System symposium - one successful example of institution-wide engagement at Illinois
- More campus-wide workshops in future on topics related to health and education
- Representation of engagement staff at college-level to exemplify engaged scholars across campus