

Engagement Scholarship Consortium Conference

Event Schedule

Mon, Oct 02, 2023

12:00 PM

Conference Registration

🕒 12:00 PM - 6:00 PM, Oct 2

📍 South Lobby

1:30 PM

Emerging Engagement Scholars Workshop (EESW)

🕒 1:30 PM - 5:30 PM, Oct 2

📍 Centennial ABC (Lobby Level)

Pre-conferen...

3:00 PM

Engagement Academy for University Leaders (EA) Workshop (additional fee \$210)

🕒 3:00 PM - 8:05 PM, Oct 2

📍 106 (Lobby Level)

Pre-conferen...

5:00 PM

EA Dinner

🕒 5:00 PM - 6:00 PM, Oct 2

📍 Corniche (Second Level)

6:00 PM

EESW Dinner

🕒 6:00 PM - 8:00 PM, Oct 2

📍 Big Ten C (lobby level)

Engagement Academy for University Leaders (EA) Workshop (continued)

🕒 6:00 PM - 8:00 PM, Oct 2

📍 106 (Lobby Level)

Tue, Oct 03, 2023

7:00 AM

Conference Registration

🕒 7:00 AM - 3:30 PM, Oct 3

📍 South Lobby

7:30 AM

Engagement Academy for University Leaders (EA) Workshop (continued)

🕒 7:30 AM - 10:00 AM, Oct 3

📍 106 (Lobby Level)

Pre-conferen...

8:00 AM

Outreach and Engagement Practitioners Network (OEPN) Workshop (additional fee \$125)

🕒 8:00 AM - 12:00 PM, Oct 3

📍 Lincoln (Lobby Level)

Pre-conferen...

Pre-College and Youth Programming Workshop (additional fee \$125)

🕒 8:00 AM - 12:00 PM, Oct 3

📍 103 AB (Lobby Level)

Pre-conferen...

9:00 AM

Emerging Engagement Scholars Workshop (EESW) (continued)

🕒 9:00 AM - 4:00 PM, Oct 3

📍 Brody Square 241 Brody W, East Lansing 48825

Pre-conferen...

10:30 AM

ESC Board Member Representative Business Meeting (invitation only)

🕒 10:30 AM - 4:00 PM, Oct 3

📍 Corniche (Second Level)

12:00 PM

OEPN Lunch

🕒 12:00 PM - 1:15 PM, Oct 3

📍 Big Ten C (lobby level)

Pre-College and Youth Programming Lunch

🕒 12:00 PM - 1:00 PM, Oct 3

📍 104 AB (Lobby Level)

1:00 PM

Pre-College and Youth Programming Workshop (continued)

🕒 1:00 PM - 3:45 PM, Oct 3

📍 103 AB (Lobby Level)

1:15 PM

Outreach and Engagement Practitionas Network (OEPN) Workshop (continued)

🕒 1:15 PM - 3:30 PM, Oct 3

📍 Lincoln (Lobby Level)

3:00 PM

UNESCO Knowledge for Change (K4C) Network Open House

🕒 3:00 PM - 5:00 PM, Oct 3

📍 Room 93 (Garden Level)

5:00 PM

Welcome Reception

🕒 5:00 PM - 7:00 PM, Oct 3

📍 Breslin Center

Meals and Recep...

Conference Registration

🕒 5:00 PM - 7:00 PM, Oct 3

📍 Breslin Center

7:00 PM

Journal of Community Engagement and Scholarship Reception (invitation only)

🕒 7:00 PM - 9:00 PM, Oct 3

📍 62 (Garden Level)

Meals and Recep...

Wed, Oct 04, 2023

7:00 AM

Breakfast

🕒 7:00 AM - 8:00 AM, Oct 4

📍 Big Ten ABC (Lobby Level)

[Meals and Recep...](#)

Conference Registration

🕒 7:00 AM - 6:00 PM, Oct 4

📍 South Lobby

8:00 AM

Welcome

🕒 8:00 AM - 8:30 AM, Oct 4

📍 Big Ten ABC (Lobby Level)

[Plenary Sess...](#)

Kwesi Brookins will facilitate a conference opening plenary session in which attendees will be welcomed by representatives of the Engagement Scholarship Consortium, Michigan State University, and the native people of Michigan.

👤 Speakers



Craig Brookins

Vice Provost for University Outreach and Engagement
Michigan State University



Laurie Van Egeren

Assistant Provost for University-Community Partnerships
Michigan State University



Thomas Jeitschko

Interim Provost and Executive Vice President for Academic Affairs
Michigan State University



Don Lyons

Founder and Lead Consultant
Indigenise, LCC

8:30 AM

Plenary Session: The State of Community Engagement Scholarship in Higher Education

🕒 8:30 AM - 9:30 AM, Oct 4

📍 Big Ten ABC (Lobby Level)

[Plenary Sess...](#)

The conference's opening plenary session features a panel of leaders of key professional associations and organizations that support and advocate for community engagement. Moderator Kelli Huth will lead a discussion focused on panelists' perspectives on broad questions about the current state of community engagement in higher education. This session will offer attendees insights from leaders deeply grounded in the work of advancing and promoting community-engaged scholarship and university outreach, and it will offer panelists the chance to engage in a thoughtful exchange aimed at bringing to light issues of common concern and opportunities for common cause.

🚩 **Panelist**



Bobbie Laur
President
Campus Compact



Sharon Paynter
Vice-Chair, Commission on Economic and Community Engagement
Association of Public and Land-grant Universities



Nicole Webster
Penn State University Park



Laurie Van Egeren
Assistant Provost for University-Community Partnerships
Michigan State University

🚩 **Moderator**



Kelli Huth
Associate Vice President for Community Engagement
Ball State University

9:00 AM

ESC Conference Bookstore

🕒 9:00 AM - 3:30 PM, Oct 4

📍 Galaxy Room (Lobby Level)

9:45 AM

Symposium Session

🕒 9:45 AM - 10:45 AM, Oct 4

📍 103 AB (Lobby Level)

Symposiu...

- Maximizing Extension Engagement by Telling Our Story Through Partnership Marketing
- UGA CyberArch: A Cybersecurity Clinic Model and Experiential Learning Opportunity
- Colorado State University Extension Internship Program: A Centerpiece of University Engagement

🚩 **Speakers**



Timothy McDermott
Ohio State University



Jenny Lobb
Family and Consumer Sciences Educator
Ohio State University Extension



Mark Lupo
The University of Georgia



Rebecca Hill
Agricultural Economist
Colorado State University

3 Subsessions

● Maximizing Extension Engagement by Telling Our Story Through Partnership Marketing

🕒 9:45 AM - 10:45 AM, Oct 4

📍 103 AB (Lobby Level)

● UGA CyberArch: A Cybersecurity Clinic Model and Experiential Learning Opportunity

🕒 9:45 AM - 10:45 AM, Oct 4

📍 103 AB (Lobby Level)

● Colorado State University Extension Internship Program: A Centerpiece of University Engagement

🕒 9:45 AM - 10:45 AM, Oct 4

📍 103 AB (Lobby Level)

Symposium Session

🕒 9:45 AM - 10:45 AM, Oct 4

📍 106 (Lobby Level)

Symposiu...

- Feminism, Global Dialogue, and Engaged Scholarship: The History of Amanda Labarca's Community Engagement Project
- Feminist Lenses in Community Psychology
- Community Engagement as a Catalyst for Reproductive Justice

🔙 Speakers



Matias Flores

Cornell University



Diana Quito

PHD Graduate Student

The University of Alabama Graduate School



Naomi Fertman

University of Texas at El Paso



Sarah De Los Santos Upton

The University of Texas at El Paso

3 Subsessions

● Feminism, Global Dialogue, and Engaged Scholarship: The History of Amanda Labarca's Community Engagement Project

🕒 9:45 AM - 10:45 AM, Oct 4

📍 106 (Lobby Level)

● Feminist Lenses in Community Psychology

🕒 9:45 AM - 10:45 AM, Oct 4

📍 106 (Lobby Level)

● Community Engagement as a Catalyst for Reproductive Justice

🕒 9:45 AM - 10:45 AM, Oct 4

📍 106 (Lobby Level)

Symposium Session

🕒 9:45 AM - 10:45 AM, Oct 4

📍 Michigamme (Garden Level)

Symposiu...

- Assessing the Institutionalization of Community Engagement
- Lehigh 360: Synergizing High-Impact Opportunities Across Campus Silos
- Reimagining the Nystrand Center of Excellence in Education

🔊 Speakers



Lauren Wendling
Director of Institutional Success
Collaboratory



Michelle Spada
Program Manager - Lehigh 360, Office of Creative Inquiry + Mountaintop Initiative
Lehigh University



Bill Whitney
Assistant Vice Provost for Experiential Learning Programs
Lehigh University



Geneva Stark
Director of Nystrand Center of Excellence in Education/Clinical Professor
University of Louisville



Henry Cunningham
Director of Community Engagement
University of Louisville

3 Subsessions

● **Assessing the Institutionalization of Community Engagement**

🕒 9:45 AM - 10:45 AM, Oct 4

📍 Michigamme (Garden Level)

● **Lehigh 360: Synergizing High-Impact Opportunities Across Campus Silos**

🕒 9:45 AM - 10:45 AM, Oct 4

📍 Michigamme (Garden Level)

● **Reimagining the Nystrand Center of Excellence in Education**

🕒 9:45 AM - 10:45 AM, Oct 4

📍 Michigamme (Garden Level)

Including Community in Analyzing Data: Discussions of Experiences, Processes, and Lessons Learned

🕒 9:45 AM - 10:45 AM, Oct 4

📍 62 (Garden Level)

Roundtab...

Researchers, community members, students, and VISTA members will share experiences analyzing qualitative and quantitative data from three research projects. Presenters will share processes used to involve partners in analyzing data and guide a discussion about their own challenges and successes involving partners in analyzing data.

📌 Speakers



Jessica Barnes-Najor
Developmental Psychologist
Michigan State University



Chelsea Wentworth
Assistant Professor
Michigan State University



Danielle Gartner
Assistant Professor
Michigan State University



Ann Cameron
Inter-Tribal Council of Michigan



Jessica Saucedo
PhD Student
Michigan State University



Lisa Martin
Johns Hopkins University

Failing Forward: Fostering Resilience

🕒 9:45 AM - 10:45 AM, Oct 4

📍 101 (Lobby Level)

Roundtab...

As educators in living and learning communities, we are committed to students' holistic development. Failure is a natural and often necessary part of achieving success. This program provides strategies and insights on how to teach and enhance resilience to cope with failure in a positive and life-giving ways.

📌 Speakers



Lynn Ortale
President
Maria College



Stephen Stunder
Assistant Professor, Human Services/Director, Human Services Mgmt/Asst Director, School Counseling
Chestnut Hill College

Bridging the (Eco-Literacy) Gap: Using Public Engagement to Explore, Learn, and Act

🕒 9:45 AM - 10:45 AM, Oct 4

📍 Willy (Lobby Level)

Panel

In Detroit, there is tremendous potential to reimagine the city's vacant lots as sustainable places that serve as the visionary nexus of social and environmental change. This presentation will share a public engagement process co-designed by university and community partners to mobilize people and inform future decision-making about vacant land.

🗣️ Speakers



Lisa DuRussel
University of Michigan - Ann Arbor



Nana Temple
University of Michigan - Ann Arbor



Amanda Paige
Director of Programs
Bailey Park Neighborhood Development Corporation

Open Educational Resources: A Tool for Mobilizing People and Institutions

🕒 9:45 AM - 10:45 AM, Oct 4

📍 104 AB (Lobby Level)

Interactive Work...

Over time, community-engaged scholarship develops a portfolio of materials that can be reused or creatively recycled in support of sustained work by the community. Open Education Resources (OER) is a relatively new tool for equitable access to information. This workshop explores the emerging fit of OER with engaged scholarship.

🗣️ Speakers



Martin Wolske
School of Information Sciences, Illinois



Stephanie Dietrich
P-20, OERD
Northern Illinois University



Rebecca Hodson
Associate Director of International Education, Student Success, Inclusion and Belonging
University of Illinois Urbana-Champaign

360-Degree Assessment for Community Engagement Programs: Capturing Outcomes and Impacts

🕒 9:45 AM - 10:45 AM, Oct 4

📍 105 AB (Lobby Level)

Interactive Work...

Assessment is nothing new, but we do not always understand exactly how our programs make an impact in the world. This session outlines a comprehensive evaluation model that includes quantitative measures, qualitative interviews, a return-on-investment study, and a participatory mapping exercise to capture outcomes and impacts.

🗣️ Speaker



Gavin Luter
UW-Madison

Step Back to Move Forward

🕒 9:45 AM - 10:45 AM, Oct 4

📍 Centennial AB (Lobby Level)

Interactive Work...

In engagement work, university professionals often need to step back to understand community challenges to move forward with change. In this interactive session, Auburn University Outreach faculty/staff will share their journey of listening to community and campus stakeholders, evaluating challenges, and creating positive change with the community.

🗨️ Speakers



Anna-Margaret Goldman

Director of the Center for Educational Outreach and Engagement
Auburn University



Hollie Cost

Assistant Vice President for University Outreach and Public Service
Auburn University

Utilizing Service-Learning for a Community Partnership Grant

🕒 9:45 AM - 10:45 AM, Oct 4

📍 Centennial C (Lobby Level)

Interactive Work...

Service-learning projects transform learning while providing benefits to community partners. This workshop will outline the process by which an entire undergraduate social work class completed a service-learning project assisting with a Community Partnership Grant awarded to a local school district. Elements of project matching, funding, and management will be covered.

🗨️ Speakers



Kim Rice

University of Illinois at Urbana-Champaign



Megan Anderson

Rantoul Township HS



Katie Shumway

University of Illinois Urbana-Champaign



Will Villaflor

Community Learning Lab



Mindy Moberg

Rantoul Township High School

11:00 AM

Symposium Session

🕒 11:00 AM - 12:00 PM, Oct 4

📍 103 AB (Lobby Level)

Symposiu...

- Con Respeto: The Ethics of Working with Latina/o/x Communities
- The Stories Are Burning Inside of Us: Exploring Daily Violence, Peacebuilding, and Intercultural Humility and Resilience in Interracial Family Communication
- Navigating Identity Differences in Mentor-Mentee Relationships

🚩 Speakers



Elena Foulis

Texas A&M University-San Antonio



Aliah Mestrovich Seay

4-H Youth Development Specialist for Community Vitality
Kansas State University



Andy Wefald

Associate Professor
Kansas State University



Xatyiswa Maqashalala

Kansas State University

3 Subsessions

● **Con Respeto: The Ethics of Working with Latina/o/x Communities**

🕒 11:00 AM - 12:00 PM, Oct 4

📍 103 AB (Lobby Level)

● **The Stories Are Burning Inside of Us: Exploring Daily Violence, Peacebuilding, and Intercultural Humility and Resilience in Interracial Family Communication**

🕒 11:00 AM - 12:00 PM, Oct 4

📍 103 AB (Lobby Level)

● **Navigating Identity Differences in Mentor-Mentee Relationships**

🕒 11:00 AM - 12:00 PM, Oct 4

📍 103 AB (Lobby Level)

Symposium Session

🕒 11:00 AM - 12:00 PM, Oct 4

📍 106 (Lobby Level)

Symposiu...

- Service Learning in Action: Bringing Community Engagement and Service to an Online University
- Shifting the Partnership Paradigm: A Community-Driven Online Service-Learning Partnership Toolkit
- Speak Up for Ukraine: Using Program Assessment to Ensure All Voices Are Heard

🗣️ Speakers



Catherine Flynn

Professor
Purdue University Global



Lindsey Payne

Assistant Professor of Practice Environmental & Ecological Engineering
Purdue University



Carly Evich

Graduate Assistant for Service-Learning
Purdue University



Jessica Mcmillan

Assistant Director for Service-Learning
Virginia Tech



Matthew Komelski

Co-Author
Virginia Tech



Iuliia Hoban

Virginia Tech

3 Subsessions

● Service Learning in Action: Bringing Community Engagement and Service to an Online University

🕒 11:00 AM - 12:00 PM, Oct 4

📍 106 (Lobby Level)

● Shifting the Partnership Paradigm: A Community-Driven Online Service-Learning Partnership Toolkit

🕒 11:00 AM - 12:00 PM, Oct 4

📍 106 (Lobby Level)

● Speak Up for Ukraine: Using Program Assessment to Ensure All Voices Are Heard

🕒 11:00 AM - 12:00 PM, Oct 4

📍 106 (Lobby Level)

Symposium Session

🕒 11:00 AM - 12:00 PM, Oct 4

📍 Michigamme (Garden Level)

Symposiu...

- Transforming Research Education: A Networking Platform for Central Asia's Emerging Scholars
- Faculty Online Certification Training to Expand Community Engagement in the Classroom
- Reflections on Development and Implementation of Engaged Scholars Academy

Speakers



Eloise Lustik
Lehigh University



Dylan McFarland
Lehigh University



Khanjan Mehta
Vice Provost for Creative Inquiry
Lehigh University



Ellie Judd
Lehigh University



Stacey Alexander
Immersive Learning Project Manager
Ball State University



Sonali Diddi
Assistant Professor
Colorado State University



Geniphyr Ponce-Pore
Director CSU System Hubs
Colorado State University

3 Subsessions

● **Transforming Research Education: A Networking Platform for Central Asia's Emerging Scholars**

🕒 11:00 AM - 12:00 PM, Oct 4
📍 Michigamme (Garden Level)

● **Faculty Online Certification Training to Expand Community Engagement in the Classroom**

🕒 11:00 AM - 12:00 PM, Oct 4
📍 Michigamme (Garden Level)

● **Reflections on Development and Implementation of Engaged Scholars Academy**

🕒 11:00 AM - 12:00 PM, Oct 4
📍 Michigamme (Garden Level)

Mobilizing Artificial Intelligence Tools to Advance Community Engagement

🕒 11:00 AM - 12:00 PM, Oct 4
📍 101 (Lobby Level)

Roundtab...

The past 12 months have seen an unprecedented expansion in public access to artificial intelligence tools such as ChatGPT. This roundtable will begin with a brief presentation on the fundamentals of AI tools and how one civic engagement center is utilizing them to power some aspects of its work.

Speaker



A. Jackson Harris
Director, Civic Learning Lab at The University of Alabama
The University of Alabama

Local Climate Action Program: A Win-Win Approach for Local-Scale Climate Solutions and Student Engagement

🕒 11:00 AM - 12:00 PM, Oct 4

📍 62 (Garden Level)

Roundtab...

This session will share lessons learned from Pennsylvania's Local Climate Action Program, now administered through Penn State University. This program partners undergraduate and graduate students with municipal government officials throughout the Commonwealth to facilitate local climate action planning with the goal of encouraging replication in other places.

🗣️ Speakers



Brandi Robinson

Associate Teaching Professor
Penn State University



Peter Buck

Pennsylvania State University

Engaging Pre-Service Teachers Across Cultures: New Ways of Teaching and Learning

🕒 11:00 AM - 12:00 PM, Oct 4

📍 Corniche (Second Level)

Roundtab...

Teachers are the most important factor in improving student outcomes. Pre-service teachers need to obtain competencies, such as global and multicultural awareness, to prepare students for future. The purpose of the project is to develop such competencies through community engagement projects of pre-service teachers at MSU and Kazakhstan's Women Pedagogical University.

🗣️ Speakers



Aliya Bizhanova

Graduate Research Assistant
Michigan State University



Arafat Nurlakov

Mugalim Kazakhstan

Engaging and Supporting Small and Socially Disadvantaged Latino Farmers

🕒 11:00 AM - 12:00 PM, Oct 4

📍 61 (Garden Level)

Panel

Presenters will discuss how their organizations support small-scale, disadvantaged Latino farmers whose numbers are rapidly growing across the country. Latinos face several constraints for their farming operations, including language barriers, low education levels, and an inability to access existing markets.

🗨️ Speakers



Marcelo Siles
Research Specialist
Michigan State University



Carlos Rincon
US EPA



Rigoberto Delgado
National Immigrant Farming, org



Maria de Lourdes Gonzalez
Enlace Chicago



Lydia Villanueva
Executive Director
CASA del Llano, INC



Jennifer silveri
Director Of Field Operations
Michigan Food & Farming Systems (MIFFS)



Bradley Lubben
University of Nebraska - Lincoln



Filiberto Villa Gomez
Michigan Food & Farming Systems (MIFFS)

Community-Engaged Research and Institutional Review Board Processes and Policies

🕒 11:00 AM - 12:00 PM, Oct 4

📍 Willy (Lobby Level)

Panel

When engaged in community-based projects for an extended period, faculty may want to share their work with academic and nonacademic audiences. However, such opportunities may be hindered or delayed if an IRB was not explained and obtained in collaboration with the community partner, ideally before the work began.

🗨️ Speakers



Shirley Matteson
Associate Professor of Middle Level Education
Texas Tech University



Casside Street
Director, Human Research Protection Program
Texas Tech University



Claire Lannoye-Hall
Director of Education
Detroit Zoological Society



Birgit Green
Assistant Vice Provost, University Outreach and Engagement
Texas Tech University

Tapping into Community Wisdom for Community-Driven Problem-Solving

🕒 11:00 AM - 12:00 PM, Oct 4

📍 105 AB (Lobby Level)

Interactive Work...

Standpipe Hill Strategies and the Center for Public Life at Oklahoma State University - Tulsa co-created an approach to community-driven problem-solving integrating community organizing and community-based participatory action research. Workshop participants will learn methods for tapping into community wisdom as the primary problem-solving resource by leveraging university-based reputation, resources, and skills.

👤 Speakers



Tami Moore

Associate Professor of Higher Education and Student Affairs
Oklahoma State University



Greg Robinson

Community Development Consultant
Standpipe Hill Strategies, LLC.



Cynthia Soto

Oklahoma State University

Developing and Sustaining Authentic Community Engagement as a Hispanic-Serving Institution (HSI)

🕒 11:00 AM - 12:00 PM, Oct 4

📍 Centennial AB (Lobby Level)

Interactive Work...

Moving from a Hispanic Serving Institution in name to practice required development of a strategic action plan and a focus on “Hispanic Servingness” as a model for authentic relationships. In this workshop, presenters will guide attendees in a reflective process to lay the groundwork for their own best practices.

👤 Speakers



Naomi Fertman

University of Texas at El Paso



Jennifer Lujan

Interim Director
The University of Texas at El Paso

A Cathartic Conversation: Navigating the Covid Shift as Community-Engaged Scholars

🕒 11:00 AM - 12:00 PM, Oct 4

📍 Centennial C (Lobby Level)

Interactive Work...

This “Cathartic Conversation” features findings from research on well-being among boundary spanners while providing an opportunity for attendees to contribute their perspectives to the ongoing data collection. Attendees will unpack well-being concepts and explore strategies to support work-life harmony, career progression, and the impact of our work.

Speakers



Jenn Purcell

Professor, School of Government and International Affairs
Kennesaw State University



Diane Doberneck

Director of Faculty & Professional Development
Michigan State University



Jeanne McDonald

Associate Director, Office for Outreach and Engagement
University of Colorado Boulder



Darlene Rodriguez

Kennesaw State University

12:00 PM

Lunch / W.K. Kellogg Foundation Community Engagement Scholarship Awards

🕒 12:00 PM - 1:30 PM, Oct 4

📍 Big Ten ABC (Lobby Level)

Plenary Session

Meals and Receptions

Over lunch, the Engagement Scholarship Consortium will hold a ceremony honoring recipients of the W. K. Kellogg Foundation Community Engagement Scholarship Award.

Honors will first be provided to nominees for the W. K. Kellogg Foundation Community Engagement Scholarship Award selected for special recognition as Exemplary Projects, including:

- *The RAISE Lab: Responsible AI for Social Emancipation*, Pennsylvania State University
- *Trager Institute Age-Friendly Louisville*, University of Louisville

The W. K. Kellogg Foundation Community Engagement Scholarship Awards will then be presented to:

- North Carolina State University for the *Coastal Dynamics Design Lab* (south region)
- Ohio State University for the *Columbus Free Clinic* (north central region)
- Texas A&M University for *Water-Air-Life: A Partnership with Texas Environmental Justice Advocacy Services* (west region)
- University of Pittsburgh for *The Pittsburgh Study* (northeast region)

About the Awards

Established in 2006, the W. K. Kellogg Foundation Community Engagement Scholarship and C. Peter Magrath Community Engagement Scholarship Awards recognize four-year public universities that have made exemplary strides to become more closely and productively engaged with communities through their teaching/learning, discovery, and service activities.

The W. K. Kellogg Foundation Community Engagement Scholarship Awards are presented to regional recipients at a ceremony held during the annual conference of the Engagement Scholarship Consortium. Recipients compete as finalists for the C. Peter Magrath Community Engagement Scholarship Award presented by the Association of Public and Land-grant Universities in November at its annual meeting.

Made possible by a grant from the W. K. Kellogg Foundation, the C. Peter Magrath Community Engagement Scholarship Award includes \$20,000 and a sculpture. The three recipients of the W. K. Kellogg Foundation Community Engagement Scholarship Award that are not selected to receive the C. Peter Magrath Community Engagement Scholarship Award each receive a cash prize of \$5,000.

Presenter



Ahmad Ezzeddine

Vice President, Academic Student Affairs and Global Engagement
Wayne State University



Bernie Burrola

Vice President, International, Community, and Economic Engagement
Association of Public and Land-grant Universities

1:45 PM

Symposium Session

🕒 1:45 PM - 2:45 PM, Oct 4

📍 103 AB (Lobby Level)

Symposiu...

- Changing Community Engagement Models with Indigenous Shuar Communities in Ecuador
- Navigating Community Engagement During a Public Health Crisis
- Transformational and Sustainable Change in the Post-Pandemic Linguistic Landscape

👤 Speakers



Barrett Brenton

Faculty Engagement Associate
Binghamton University



Nicole Jones

Michigan State University



Kenyetta Dotson

Michigan State University



Lourdes Sanchez-Lopez

Professor of Spanish; Department Associate Chair; Director, Spanish for Specific Purposes
University of Alabama at Birmingham

3 Subsessions

● Changing Community Engagement Models with Indigenous Shuar Communities in Ecuador

🕒 1:45 PM - 2:45 PM, Oct 4

📍 103 AB (Lobby Level)

● Navigating Community Engagement During a Public Health Crisis

🕒 1:45 PM - 2:45 PM, Oct 4

📍 103 AB (Lobby Level)

● Transformational and Sustainable Change in the Post-Pandemic Linguistic Landscape

🕒 1:45 PM - 2:45 PM, Oct 4

📍 103 AB (Lobby Level)

Symposium Session

🕒 1:45 PM - 2:45 PM, Oct 4

📍 104 AB (Lobby Level)

Symposiu...

- The Workforce Solar Housing Partnership: An Engaged Approach to Addressing Rural Housing Affordability
- Effectiveness of the Qungasvik Intervention in Rural Alaska Native Communities
- Virtual Reality Promotes Design Understanding and Engagement with Rural Residents

📌 Speakers



Joshua Brewer

Habitat for Humanity of the Northern Flint Hills



Michael Gibson

Assistant Professor
Kansas State University



KyungSook Lee

Research Assistant Professor
University of Alaska - Fairbanks



James Allen

University of Alaska - Fairbanks



Andrew Grogan-Kaylor

University of Michigan



Stacy Rasmus

University of Alaska - Fairbanks



Maria Delgado

Assistant Professor
Colorado State University

3 Subsessions

● **The Workforce Solar Housing Partnership: An Engaged Approach to Addressing Rural Housing Affordability**

🕒 1:45 PM - 2:45 PM, Oct 4

📍 104 AB (Lobby Level)

● **Effectiveness of the Qungasvik Intervention in Rural Alaska Native Communities**

🕒 1:45 PM - 2:45 PM, Oct 4

📍 104 AB (Lobby Level)

● **Virtual Reality Promotes Design Understanding and Engagement with Rural Residents**

🕒 1:45 PM - 2:45 PM, Oct 4

📍 104 AB (Lobby Level)

Symposium Session

🕒 1:45 PM - 2:45 PM, Oct 4

📍 106 (Lobby Level)

Symposiu...

- Engaging Minority Voices in Rural Communities for Civic Engagement
- Promoting Positive Youth Development Among Rural Students Through After-School Programs
- Preparing Rural, First-Generation Students for Post-Secondary Education

Speakers



Kimberly Randall

Lister Hill Center for Public Health Policy
University of Alabama at Birmingham



Jasmine Kennedy

UAB - The University of Alabama at Birmingham



Amy Hutson Chatham

University of Alabama - Birmingham



Ben Zaleski

Michigan State University



Sarah Adams

Archway Professional
University of Georgia



Katherine Monroy

University of Georgia

3 Subsessions

● Engaging Minority Voices in Rural Communities for Civic Engagement

🕒 1:45 PM - 2:45 PM, Oct 4

📍 106 (Lobby Level)

● Promoting Positive Youth Development Among Rural Students Through After-School Programs

🕒 1:45 PM - 2:45 PM, Oct 4

📍 106 (Lobby Level)

● Preparing Rural, First-Generation Students for Post-Secondary Education

🕒 1:45 PM - 2:45 PM, Oct 4

📍 106 (Lobby Level)

Symposium Session

🕒 1:45 PM - 2:45 PM, Oct 4

📍 Michigamme (Garden Level)

Symposiu...

- Equitable Engagement: An Approach to Evaluating DEI in Community Engagement
- Identifying White Supremacy Culture in Service Learning and Community Engagement
- Mobilizing Change in Global Food Insecurity with Students

Speakers



Jen Rodis

Professor of Clinical Pharmacy, Associate Dean for Outreach and Engagement
The Ohio State University College of Pharmacy



Catherine L. Cotrupi

Interim Assistant Dean and Director for Diversity, Inclusion, and Strategic Partnerships
Virginia Tech



George Daniels

Associate Professor of Journalism
The University of Alabama

3 Subsessions

● **Equitable Engagement: An Approach to Evaluating DEI in Community Engagement**

🕒 1:45 PM - 2:45 PM, Oct 4
📍 Michigamme (Garden Level)

● **Identifying White Supremacy Culture in Service Learning and Community Engagement**

🕒 1:45 PM - 2:45 PM, Oct 4
📍 Michigamme (Garden Level)

● **Mobilizing Change in Global Food Insecurity with Students**

🕒 1:45 PM - 2:45 PM, Oct 4
📍 Michigamme (Garden Level)

Engagement as Allyship: The Real Work of Justice-Oriented Partnerships

🕒 1:45 PM - 2:45 PM, Oct 4

📍 101 (Lobby Level)

Roundtab...

This roundtable will provide space for conversation among conference participants interested in situating everyone – community members and university-located folks – as both teachers and learners in pursuit of community wisdom as a foundation for community problem-solving.

🗣️ **Speaker**



Tami Moore

Associate Professor of Higher Education and Student Affairs
Oklahoma State University

Being Effective Gatekeepers: Suicide Prevention Strategies

🕒 1:45 PM - 2:45 PM, Oct 4

📍 102 (Lobby Level)

Roundtab...

Suicide is the second leading cause of death for students. There are 1,100 suicides by students each year and more than 100 suicide attempts for each documented death. This program provides a theoretical framework linked to strategic practice to help prevent suicide and nurture an environment of respect and inclusion.

🗣️ **Speakers**



Lynn Ortale

President
Maria College



Stephen Stunder

Assistant Professor, Human Services/Director, Human Services Mgmt/Asst Director, School Counseling
Chestnut Hill College

Writing for Change: A Call for Engagement and Action

🕒 1:45 PM - 2:45 PM, Oct 4

📍 Willy (Lobby Level)

Panel

“Writing for Change” is a grant-funded, community-based immersive learning course, a nontraditional approach to ENG 103/ENG 104 with civic responsibility as its focus. Students stay together for a year, with the same instructor, working closely with a community partner in an effort to bring positive change to their city.

🗣️ Speakers



Laura Romano

Associate Teaching Professor of English
Ball State University



Darolyn "Lyn" Jones

Assistant Teaching Professor, Ball State University
Ball State University



Kathryn Ludwig

Ball state university

From Silos to Partnerships: Building an Institutional Community of Practice

🕒 1:45 PM - 2:45 PM, Oct 4

📍 Red Cedar B (Lobby Level)

Panel

Support for engagement is embedded in approaches to fulfilling educational and institutional missions and simultaneously dispersed across established silos. Panelists will share reasons to collaborate with and support one another, ways to leverage resources, approaches to building a community of practice, and how/why to balance university and program engagement goals.

🗣️ Speakers



Krista Bailey

Pennsylvania State University



Ilona Ballreich

Program Director of the Sustainable Communities Collaborative
Penn State University



Michael Zeman

Student Engagement Network, Director
Penn State University

Impacting Change for Court-Involved Individuals Through Engaged Research

🕒 1:45 PM - 2:45 PM, Oct 4

📍 61 (Garden Level)

Panel

This panel discusses how a family court and faculty and students from a large university form a successful research collaborative: The Juvenile Risk Assessment Team. Each panelist discusses their individual community-engaged research projects, including barriers and mutually beneficial outputs, and positive change resulting from their research.

🗨️ Speakers



Alyssa LaBerge
Graduate Research Assistant
Michigan State University



Jordan Parker
Michigan State University



Ashtaan Rapanos
Graduate Research Assistant
Michigan State University



Cait Cavanagh
MSU

Mobilizing Digital Content Through Manifold Distribution Strategies

🕒 1:45 PM - 2:45 PM, Oct 4

📍 105 AB (Lobby Level)

Interactive Work...

Communication and the sharing of knowledge continue to change worldwide as technology advances. Digital content now can reach communities and populations previously considered unreachable. This interactive workshop will explore the opportunity digital content providers to mobilize information about engaged scholarship, teaching, and learning.

🗨️ Speakers



A. Jackson Harris
Director, Civic Learning Lab at The University of Alabama
The University of Alabama



Daniela Susnara
Director of Planning and Assessment for Community Engagement
The University of Alabama



Karyn Bowen
University of Alabama



Adeline Ford
University of Alabama

Broadband: Higher Education and Community Partnerships

🕒 1:45 PM - 2:45 PM, Oct 4

📍 Centennial AB (Lobby Level)

Interactive Work...

Higher education can play a critical role in supporting efforts to expand access to and adoption of high-speed internet in communities through state and local partnerships. This session highlights effective approaches and encourages participant interaction about successful initiatives from other universities and colleges.

🔊 Speakers



Alison Copeland
Deputy Chief Engagement Officer
University of Missouri



Noah Washburn
University Of Missouri

3:00 PM

Symposium Session

🕒 3:00 PM - 4:00 PM, Oct 4

📍 103 AB (Lobby Level)

Symposiu...

- Engagement and Collaboration in Place Branding: Making Meaningful Connections to Enhance the Work
- Developing a Readiness Checklist for University-Church Partnerships
- Church Partners' Experiences of University-Church Partnerships

🔊 Speakers



Rita Colistra
Associate Professor
West Virginia University



Erica Mitchell (she/her)
Assistant Professor
Michigan State University



Kristina Gordon
professor
University of Tennessee



Lynsey Hinnenkamp
University of Tennessee - Knoxville



Deana Bushnag
University of Tennessee - Knoxville



Desirée Woodle
University of Tennessee - Knoxville

3 Subsessions

● **Engagement and Collaboration in Place Branding: Making Meaningful Connections to Enhance the Work**

🕒 3:00 PM - 4:00 PM, Oct 4

📍 103 AB (Lobby Level)

● **Developing a Readiness Checklist for University-Church Partnerships**

🕒 3:00 PM - 4:00 PM, Oct 4

📍 103 AB (Lobby Level)

● **Church Partners' Experiences of University-Church Partnerships**

🕒 3:00 PM - 4:00 PM, Oct 4

📍 103 AB (Lobby Level)

Symposium Session

🕒 3:00 PM - 4:00 PM, Oct 4

📍 104 AB (Lobby Level)

Symposiu...

- Conservation Tales: Cultivating Transdisciplinary Collaborations to Create Science Education Materials
- Sea Grant Great Lakes Literacy Shipboard Science Workshop Evaluation
- The STEM Showcase: Collaborating with Future Leaders in STEM

👤 Speakers



Tom McConnell

The Hoosier Science Teacher Advisory Board
Ball State University



Barbara Giorgio-Booher

Assistant Professor
Ball State University



Heather Triezenberg

Board Of Advisors, Quantitative Fisheries Center, Dept. of Fisheries and Wildlife
Michigan State University



Jennifer Hunnell

Communications Coordinator
Michigan State University



Brandon Schroeder

Michigan State University



Meaghan Gass

Michigan State University



Paige Rentfro

Program Coordinator for Community Education
The University of Alabama



Jake Peterson

Assistant Director for Community Education
The University of Alabama



Collin Patton

University of Alabama

3 Subsessions

● **Conservation Tales: Cultivating Transdisciplinary Collaborations to Create Science Education Materials**

🕒 3:00 PM - 4:00 PM, Oct 4

📍 104 AB (Lobby Level)

● **Sea Grant Great Lakes Literacy Shipboard Science Workshop Evaluation**

🕒 3:00 PM - 4:00 PM, Oct 4

📍 104 AB (Lobby Level)

● **The STEM Showcase Experience: Collaborating with Future Leaders in STEM**

🕒 3:00 PM - 4:00 PM, Oct 4

📍 104 AB (Lobby Level)

Symposium Session

🕒 3:00 PM - 4:00 PM, Oct 4

📍 106 (Lobby Level)

Symposiu...

- Student-Veterans Leading Change Through Humanities Engagement on Campus and in the Community
- Building Blazers Behavioral Health Peer Support Network: A Mental Health Promotion Pilot Project

🔙 Speakers



Andrae Marak

Provost and Executive Vice President of Academic Affairs
Roosevelt University



Rosemary Johnsen

University of Minnesota, Crookston



Crystal Benjamin

Lecturer - Child Development and Family Studies
University of North Texas at Dallas



Constance Lacy

The University of North Texas at Dallas - Dallas, TX

2 Subsessions

● **Student-Veterans Leading Change Through Humanities Engagement on Campus and in the Community**

🕒 3:00 PM - 4:00 PM, Oct 4

📍 106 (Lobby Level)

● **Building Blazers Behavioral Health Peer Support Network: A Mental Health Promotion Pilot Project**

🕒 3:00 PM - 4:00 PM, Oct 4

📍 106 (Lobby Level)

Mobilizing Extension and Academic Partners to Build Adult Vaccine Confidence Nationwide

🕒 3:00 PM - 4:00 PM, Oct 4

📍 Willy (Lobby Level)

Panel

The onset of the COVID-19 pandemic catalyzed U.S. efforts to engage adults about immunization importance. The Cooperative Extension System, with joint CDC and USDA-NIFA funding, began efforts in 2021 to partner with academic health programs within our institutions to build confidence in and offer COVID-19 and other adult vaccinations.

🔙 Speakers



Michelle Rodgers

Extension Foundation



Katie Stofer

University of Florida



Steve Yanni

Land Grant Director
Bay Mills Community College



Veronica Oates

Professor Food and Nutritional Sciences & Department Chair
Tennessee State University

Cohort Programs and Student Success

🕒 3:00 PM - 4:00 PM, Oct 4

📍 Red Cedar B (Lobby Level)

Panel

Panelists representing student scholars, community partners, and university program staff will share the highlights and challenges of a longstanding community engagement scholars program at Michigan State University. Co-education, cohort models, and student success will be discussed. Program staff will share specific outcomes collected through program evaluation as well.

🗣️ Speakers



Renee Brown

Director, Center for Community Engaged Learning
Michigan State University



Stephanie Brewer

MSU Center for Community Engaged Learning



Erin Kramer

Democratic Engagement Coordinator
Michigan State University



Mariah Shafer

Refugee Development Center

Exploring Impact Identities to Build Relationships with Communities

🕒 3:00 PM - 4:00 PM, Oct 4

📍 61 (Garden Level)

Panel

Building public trust in scientific findings requires devoting less time to communicating scientific facts and more time to building relationships and fostering open exchanges of ideas between scientists and the public. STEM Ambassadors from Michigan State University discuss how exploring their impact identities helped them effectively engage with public groups.

📌 Speakers



Miles McNall

Director for Community-Engaged Research
Michigan State University



Diane Doberneck

Director of Faculty & Professional Development
Michigan State University



Andrew George

Associate Director, STEM Ambassador Program
University of Utah



Hailey Becker

Graduate Research Assistant
Michigan State University



Ahnalee Brincks

MsU



Allison Pease

PhD candidate
Michigan State University

Cultivating Communities of Practice for Engaged Scholarship

🕒 3:00 PM - 4:00 PM, Oct 4

📍 101 (Lobby Level)

Roundtab...

Inspired by the MetroLab Network's finding that university researchers need training that goes beyond the "what" and the "why" of community-engaged research to also focus on the "how," this roundtable will be a forum for discussion about best practices for designing and delivering effective community-engaged research training.

📌 Speakers



Liz Allen

Associate Director of Research Development, College of Arts, Media & Design
Northeastern University



Becca Berkey

Director, Community-Engaged Teaching & Research; Interim Director, University Honors Program
Northeastern University



Kimberly Lucas

Northeastern University

Fostering a Student Engagement Mindset Through Opportunities for Real-World Impact

🕒 3:00 PM - 4:00 PM, Oct 4

📍 62 (Garden Level)

Roundtab...

Learn about four high-impact programs facilitated at Penn State and Lehigh University aimed at fostering a student engagement mindset by encouraging students to reflect, find meaning in their lives, and connect with opportunities to tackle real-world problems. Discuss how to incorporate components of these programs at your own institution.

🗣️ Speakers



Michelle Spada

Program Manager - Lehigh 360, Office of Creative Inquiry + Mountaintop Initiative
Lehigh University



Bill Whitney

Assistant Vice Provost for Experiential Learning Programs
Lehigh University



Michael Zeman

Student Engagement Network, Director
Penn State University

Revitalizing Our Work as Boundary Spanners Through Communities of Practice

🕒 3:00 PM - 4:00 PM, Oct 4

📍 105 AB (Lobby Level)

Interactive Work...

How might community engagement professionals, or “boundary spanners,” collaborate to revitalize our capacity to do outreach and engagement work post-pandemic? This workshop will explore how we can build communities of practice at our own institutions that bring together colleagues doing similar work to create networks of mutual support and learning.

🗣️ Speakers



Katie Kleinhesselink

Community Outreach Program Manager
University of Colorado Boulder



Jeanne McDonald

Associate Director, Office for Outreach and Engagement
University of Colorado Boulder

Navigating University Structures to Work Toward Equitable Partnerships

🕒 3:00 PM - 4:00 PM, Oct 4

📍 Centennial AB (Lobby Level)

Interactive Work...

Although many institutions vocalize support for community engagement, there are numerous bureaucratic hoops to navigate to ensure equitable partnerships. In this interactive session, we'll share our experiences as community engagement professionals at an R1 institution navigating processes, such as paying partners, and developing more institutional support for engagement.

🗣️ Speakers



Cory Sprinkel

Community Engagement Preparation Specialist
University of Wisconsin-Madison



Gavin Luter

UW-Madison



Haley Madden

Assistant Director
Morgridge Center for Public Service

Differential Moral Framing: Facilitating Ideation and Coordination of Diverse Perspectives on What is Worth Doing

🕒 3:00 PM - 4:00 PM, Oct 4

📍 Corniche (Second Level)

Interactive Work...

This workshop will introduce a collaborative ideation method in the form of a role-playing game devised to support coordination of diverse and competing perspectives on what is worth doing. Based on the seminal work of French sociologists Luc Boltanski and Laurent Thévenot, this method supports creative problem-solving endeavors.

👤 Speakers



Sebastien Proulx

Associate Professor
The Ohio State University



Philippe Gauthier

Professeur-chercheur
Université de Montréal



William Nickley

Assistant Professor
The Ohio State University

Beyond Bars: 'Breaking the Barriers' Through Storytelling

🕒 3:00 PM - 4:00 PM, Oct 4

📍 102 (Lobby Level)

Interactive Work...

Beyond Bars, a project through Lehigh University's Impact Fellowship programs, developed a workshop toolkit called "Breaking the Barriers" that combines aspects of restorative practices and storytelling to help students reflect and think critically about issues related to the school-to-prison pipeline, which often directly affects them or their communities.

👤 Speakers



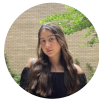
Bill Whitney

Assistant Vice Provost for Experiential Learning Programs
Lehigh University



Nessia Crispe

Lehigh University



Amadea Lehoczky Escobar

Communications Assistant
Lehigh University



Amber Brose

Lehigh University



Shley Nathan

Lehigh University

4:15 PM

Symposium Session

🕒 4:15 PM - 5:15 PM, Oct 4

📍 103 AB (Lobby Level)

Symposiu...

- Positioning Engagement: A Review of 40 Institutional Strategic Plans
- Finding Common Ground Through a University-Wide Engagement Council
- Institutionalizing Community Engaged Scholarship by Establishing Provost Council for Engagement

👤 Speakers



Lauren Wendling

Director of Institutional Success
Collaboratory



Marina Denny

Associate Vice Provost for Engagement
Oregon State University



Sonali Diddi

Assistant Professor
Colorado State University



Jennifer Martin

Associate Professor
Colorado State University



Bill Shuster

Clinical Professor, College of Business
Colorado State University



Franklyn Garry

Professor
Colorado State University



Tobi Jacobi

Colorado State University



Barbie Garnett

Park County Extension Director
Colorado State University

3 Subsessions

● **Positioning Engagement: A Review of 40 Institutional Strategic Plans**

🕒 4:15 PM - 5:15 PM, Oct 4

📍 103 AB (Lobby Level)

● **Finding Common Ground Through a University-Wide Engagement Council**

🕒 4:15 PM - 5:15 PM, Oct 4

📍 103 AB (Lobby Level)

● **Institutionalizing Community Engaged Scholarship by Establishing Provost Council for Engagement**

🕒 4:15 PM - 5:15 PM, Oct 4

📍 103 AB (Lobby Level)

Symposium Session

🕒 4:15 PM - 5:15 PM, Oct 4

📍 106 (Lobby Level)

Symposiu...

- Political Dialogue: ‘You Know It Don’t Come Easy’
- Legal Precedent for Change: The Citing Slavery - Ferndale High School Partnership

Speakers



Lane McLelland

Executive Director, Crossroads Civic Engagement Center
University of Alabama



Maureen Flint

University of Georgia



A. Jackson Harris

Director, Civic Learning Lab at The University of Alabama
The University of Alabama



Cynthia Peacock

University of Alabama



Justin Simard

Assistant Professor of Law
Michigan State University



Taylor Hall

Michigan State University



Hannah Gates

Michigan State College Of Law

2 Subsessions

● Political Dialogue: ‘You Know It Don’t Come Easy’

🕒 4:15 PM - 5:15 PM, Oct 4

📍 106 (Lobby Level)

● Legal Precedent for Change: The Citing Slavery - Ferndale High School Partnership

🕒 4:15 PM - 5:15 PM, Oct 4

📍 106 (Lobby Level)

Symposium Session

🕒 4:15 PM - 5:15 PM, Oct 4

📍 Michigamme (Garden Level)

Symposiu...

- African American History Film Series 2018 -2023
- Community Engagement and Critical Reflection of Tuscaloosa, Alabama’s Civil Rights
- A Film’s Impact on Health-Seeking Behaviors Among Mothers in Sierra Leone

🗨️ Speakers



Karen Krigger
Director of Health Equity
University of Louisville



Edwin Lee
PhD Student
University of Alabama



Scott Bridges
University of Alabama



Julia Brock
University of Alabama



George Daniels
Associate Professor of Journalism
The University of Alabama



John Giggie
University of Alabama



William Bomar
University of Alabama



Beatrice Arnfield
Global Social Impact Fellow
Lehigh University



Tiffany Valencia
Lehigh University



Brooke Erickson
Uganda Sustainable Livelihoods Research Program 2023
Lehigh University



Christina Enodien
Global Social Impact Fellow
Lehigh University



Hannah Falatko
Lehigh University



Lauren Lencovich
Global Social Impact Fellow
Lehigh University

3 Subsessions

● African American History Film Series 2018 -2023

🕒 4:15 PM - 5:15 PM, Oct 4

📍 Michigamme (Garden Level)

● Community Engagement and Critical Reflection of Tuscaloosa, Alabama's Civil Rights

🕒 4:15 PM - 5:15 PM, Oct 4

📍 Michigamme (Garden Level)

● A Film's Impact on Health-Seeking Behaviors Among Mothers in Sierra Leone

🕒 4:15 PM - 5:15 PM, Oct 4

📍 Michigamme (Garden Level)

How Can Educational Institutions Develop Effective Engaged Scholarship Initiatives?

🕒 4:15 PM - 5:15 PM, Oct 4

📍 62 (Garden Level)

Roundtab...

This multidisciplinary discussion will address barriers that hamper faculty from pursuing publicly engaged scholarship and best institutional standards that reflect and reward the practice of engagement in communities they serve. Participants with experience in collaborative change will have opportunities to share creative strategies for participants embarking on this process.

🗣 Speakers



La Barbara James Wigfall

Associate Professor
Kansas State University



Tim Steffensmeier

Director, Office of Engagement
Kansas State University



Katie Kingery-Page

Associate Dean and Professor
Kansas State University

Innovations in Inclusive Community Exhibits

🕒 4:15 PM - 5:15 PM, Oct 4

📍 61 (Garden Level)

Panel

This panel focuses on an international exhibit that showcases the creativity of people disproportionately affected by the pandemic. We discuss major exhibition innovations we designed to open inclusive exhibit spaces for the voices of people from around the globe.

🗨️ Speakers



Nancy DeJoy
Associate Professor
Michigan State University



Ben Lash
Research Assistant - WIDE (Writing, Information, and Digital Experience) Lab
Michigan State University



Kelsey Abner
MSU



Fatima Konare
Civil Rights Investigator
Michigan State University

Building a Culture of Campus Democratic and Civic Engagement

🕒 4:15 PM - 5:15 PM, Oct 4

📍 Centennial AB (Lobby Level)

Interactive Work...

This workshop is for those interested in effectively integrating campus democratic engagement strategies. Improving democratic dialogue, syllabus design, and student civic skills building will be the workshop foci. The National Study of Learning, Voting and Engagement will be discussed. A digital campus democratic engagement toolkit will be provided.

🗨️ Speakers



Renee Brown
Director, Center for Community Engaged Learning
Michigan State University



Suchitra Webster
Director, Community & Student Relations
Michigan State University



Erin Kramer
Democratic Engagement Coordinator
Michigan State University

Bringing the ‘Community’ to Campus: Engaged Scholarship Through Inclusive Postsecondary Education

🕒 4:15 PM - 5:15 PM, Oct 4

📍 Corniche (Second Level)

Interactive Work...

This presentation blurs the traditional notion of “community” because it does not involve students leaving campus to engage in service. Instead, the program brings students from the community to campus and integrates them into the university. The impact is far-reaching, as it requires the higher education institution to change.

🗨️ Speakers



Nicole DeClouette

Interim Associate Dean & Professor of Special Education
Georgia College & State University



Stephen Wills

Assistant Professor
Georgia College & State University



Elizabeth Wills

Georgia College & State University



Cora Blackford

Gc THRIVE Peer Mentor
Georgia College & State University



Madelyn St. John

Student
Georgia College & State University



Spencer Kirkley

Georgia College & State University

Feminist Community Engagement: Finding Our Way Through Disruptions

🕒 4:15 PM - 5:15 PM, Oct 4

📍 Centennial C (Lobby Level)

Interactive Work...

Feminist community-engaged scholars introduce feminist theories, practices, and activities of community engagement associated with managing change. We attend to feminist approaches for sustaining ourselves and our partnerships when disruptions impact our work. Small-group dialogue addresses strategies for engaging through disruptions. Participants leave with crowd-sourced ideas for sustaining their work.

🗨️ Speakers



Chelsea Wentworth

Assistant Professor
Michigan State University



Mindy Smith

Michigan State University



Mallet Reid

PhD Candidate
MSU Psychology



Jessica Barnes-Najor

Developmental Psychologist
Michigan State University



Diane Doberneck

Director of Faculty & Professional Development
Michigan State University

The Māpuna Lab: Scholars in Solidarity for Community Accountability

🕒 4:15 PM - 5:15 PM, Oct 4

📍 105 AB (Lobby Level)

Interactive Work...

The Māpuna Lab is a place of respite for those experiencing colonial trauma in academia. Our work is na‘au centered and focused on health and healing. Aimed at creating safe spaces for co-learning, we convene all those who believe that when Indigenous leadership is uplifted, wellness is accessible to all.

🗣️ **Speaker**



Katherine Burke

Junior Faculty Researcher
UH Mānoa Thompson School & UH West O‘ahu HIHH

Creating Community Partnerships That Last – Turn Tightropes into Bridges

🕒 4:15 PM - 5:15 PM, Oct 4

📍 Red Cedar B (Lobby Level)

Panel

If community partnerships are created through the formula Partner + University = CES, the most important component of that equation for sustainability is the plus sign. In this panel discussion, we will explore both university and community partner perspectives of the practices that comprise a sustainable partnership.

🗣️ **Speakers**



Ania Payne

Assistant Professor
Kansas State University



Ron Orchard

Kansas State University College of Veterinary Medicine



Cassidy Moreau

USD 383



Joshua Brewer

Habitat for Humanity of the Northern Flint Hills



Brandon Klierer

Associate Professor of Civic Leadership in the Staley School of Leadership
Kansas State University

Negotiating Collective Impact for Social Change in Community Partnerships and Higher Education

🕒 4:15 PM - 5:15 PM, Oct 4

📍 102 (Lobby Level)

Roundtab...

Collective impact as an organizing technique holds the potential for long-lasting and sustainable change to our understandings of community engagement. This roundtable will investigate how different campuses have approached community partnerships through a collective-impact lens and reflect on successes and challenges.

🗣️ Speakers



Amanda Wittman
Cornell University



Michael Rios
University of California, Davis



Byron White
University of North Carolina - Charlotte

Mobilizing People and Technology to Make an Impact

🕒 4:15 PM - 5:15 PM, Oct 4

📍 Willy (Lobby Level)

Panel

Community engagement at Hispanic Serving Institutions is rooted in relationship building. Panelists assert that the GivePulse technology platform has increased capacity for authentic community engagement. They will discuss the mobilization of people to strengthen partnerships between institutions and their surrounding communities to collectively learn, act, and further cultivate sustainable relationships.

🗣️ Speakers



Heriberto Garcia
Program Manager
The University of Texas at El Paso



Julissa Espinoza
Director, Civic and Community Engagement
University of La Verne



Jennifer Lujan
Interim Director
The University of Texas at El Paso



Myrna Hugo
Co-Curricular Program Coordinator | Manager, Office of Civic and Community Engagement
University of La Verne



George Luc
Co-Founder and CEO of GivePulse
GivePulse

(Re)imagining Professional Development Spaces for Graduate Students and Emerging Community-Engaged Practitioner-Scholars

🕒 4:15 PM - 5:15 PM, Oct 4

📍 101 (Lobby Level)

Roundtab...

Do you support, advocate, or develop programs for graduate students and emerging community-engaged practitioner-scholars? Are you new to community-engaged work and looking for professional development opportunities? Join this roundtable to engage in learning, reflection, and discussion about creating supportive, whole-person professional development spaces for community-engaged practitioner-scholars.

Speaker



Trina Van Schyndel

Recruiter, Office of Recruitment and Diversity
Peace Corps

5:15 PM

Poster Reception

🕒 5:15 PM - 6:15 PM, Oct 4

📍 Lincoln (Lobby Level)

Poster

26 Subsessions

● **Community Pedestrian-Bike Trail Illumination: Civic-University Partnership Phase 1**

🕒 5:15 PM - 6:15 PM, Oct 4

📍 Lincoln (Lobby Level)

● **Mobilizing Change Through the Global Café and the Language Partners Program**

🕒 5:15 PM - 6:15 PM, Oct 4

📍 Lincoln (Lobby Level)

● **Having the Right Tools: Bystander Intervention Strategies**

🕒 5:15 PM - 6:15 PM, Oct 4

📍 Lincoln (Lobby Level)

● **A Process for Asset Mapping to Develop a Blue Economy Corridor**

🕒 5:15 PM - 6:15 PM, Oct 4

📍 Lincoln (Lobby Level)

● **Faculty Research Database**

🕒 5:15 PM - 6:15 PM, Oct 4

📍 Lincoln (Lobby Level)

● **Back to the Classroom: Reengaging in Meaningful Service-Learning**

🕒 5:15 PM - 6:15 PM, Oct 4

📍 Lincoln (Lobby Level)

● **Conservation Tales: Exploring Coral Reefs Restoration**

🕒 5:15 PM - 6:15 PM, Oct 4

📍 Lincoln (Lobby Level)

● **Building the Bridge: Community Collaboration to Develop a Library Program**

🕒 5:15 PM - 6:15 PM, Oct 4

📍 Lincoln (Lobby Level)

● **Mobilizing Families and Communities: Preventing School Drop-Outs Among Latine Students**

🕒 5:15 PM - 6:15 PM, Oct 4

📍 Lincoln (Lobby Level)

● **Feminist Community Engagement Disrupted: Pathways for Engaging Together During Disruption**

🕒 5:15 PM - 6:15 PM, Oct 4

📍 Lincoln (Lobby Level)

● **Academic Community-Engaged Learning: Conversing with Community Engagement Professionals in a Pandemic Reality**

🕒 5:15 PM - 6:15 PM, Oct 4

📍 Lincoln (Lobby Level)

● **HomeFirst: A Student- and Community-Led Approach to Promoting Financial Capability and Housing Stability**

🕒 5:15 PM - 6:15 PM, Oct 4

📍 Lincoln (Lobby Level)

● **Analysis of a Community-Based Live Poverty Simulation: Building Empathy and Advocacy for the Underserved in Medical Education**

🕒 5:15 PM - 6:15 PM, Oct 4

📍 Lincoln (Lobby Level)

● **Impacts of Colonization and Militarization on Health Outcomes in Guam**

🕒 5:15 PM - 6:15 PM, Oct 4

📍 Lincoln (Lobby Level)

● **Learning from Failure: Reinvention of a Service-Learning Praxis in a**

Community-Engaged Engineering Design Course

🕒 5:15 PM - 6:15 PM, Oct 4

📍 Lincoln (Lobby Level)

● Designing and Implementing Innovative Fitness Content Within a Juvenile Detention Center

🕒 5:15 PM - 6:15 PM, Oct 4

📍 Lincoln (Lobby Level)

● International Doctoral Students' Experiences Working in an Out-of-School-Time Program

🕒 5:15 PM - 6:15 PM, Oct 4

📍 Lincoln (Lobby Level)

● Writing Across the Community to Build Homes, Community, and Hope

🕒 5:15 PM - 6:15 PM, Oct 4

📍 Lincoln (Lobby Level)

● Alumni Perspectives on Volunteering in Informal Physics Programs

🕒 5:15 PM - 6:15 PM, Oct 4

📍 Lincoln (Lobby Level)

● Mapping Engagement: A Collaborative Paradigm of Community-Engaged Scholarship

🕒 5:15 PM - 6:15 PM, Oct 4

📍 Lincoln (Lobby Level)

● Mobilizing People: Rural Women in Appalachia and Higher Education

🕒 5:15 PM - 6:15 PM, Oct 4

📍 Lincoln (Lobby Level)

● Identifying Key Components in Informal Physics Education Programs to Effect Change

🕒 5:15 PM - 6:15 PM, Oct 4

📍 Lincoln (Lobby Level)

● Anatomy of Philanthropy in Higher Education as a Means of Mobilization

🕒 5:15 PM - 6:15 PM, Oct 4

📍 Lincoln (Lobby Level)

● Graduate Student Research Contributions to Systemic Change: The Case of the Chicago Foodshed Mapping Project

🕒 5:15 PM - 6:15 PM, Oct 4

📍 Lincoln (Lobby Level)

● Engaged Learning: Conducting a Program Evaluation for a Community-Engaged Scholar Network

🕒 5:15 PM - 6:15 PM, Oct 4

📍 Lincoln (Lobby Level)

● Finding Purpose and Engagement Growing Local Food on a College Campus

🕒 5:15 PM - 6:15 PM, Oct 4

📍 Lincoln (Lobby Level)

6:30 PM

ESC Conference Reception

🕒 6:30 PM - 9:00 PM, Oct 4

📍 Michigan Princess Riverboat (Lansing)

Meals and Recep...

Thu, Oct 05, 2023

7:00 AM

Breakfast

🕒 7:00 AM - 8:00 AM, Oct 5

📍 Big Ten ABC (Lobby Level)

Meals and Recep...

Conference Registration

🕒 7:00 AM - 4:00 PM, Oct 5

📍 South Lobby

8:00 AM

ESC Awards for Excellence in Engaged Scholarship

🕒 8:00 AM - 8:45 AM, Oct 5

📍 Big Ten ABC (Lobby Level)

Plenary Sess...

Following breakfast, Engagement Scholarship Consortium President Laurie Van Egeren will present the 2023 ESC Awards for Excellence in Engaged Scholarship, including the:

- **Excellence in Community Partner Engagement Award** to Margaret Khaita and Naomi Lumutenga, Mississippi State University, for the *Higher Education Resource Services-East Africa* project
- **Excellence in Faculty Community Engagement Award** to Matthew Kelley, University of Washington – Tacoma, for the *Action Mapping Project*
- **Excellence in Staff Community Engagement Award** to Shaunta Stanford, Ohio State University, for the *Ohio State University Community Health Worker Training Program*
- Inaugural **Distinguished Dissertation Award** to Ashley Hernandez, University of North Carolina – Chapel Hill, for *Boiling Heights: Diverging Politics and Anti-Gentrification Activism in the Boyle Heights Neighborhood of Los Angeles*
- **Ryan, Moser, Reilly Award for Excellence in Community Engagement Institutional Leadership** to Ball State University
- **Hiram E. Fitzgerald Distinguished Engaged Scholar Award** to John Saltmarsh, University of Massachusetts – Boston

The session will afford attendees the opportunity to provide a fitting congratulations to each of the worthy award recipients.

👤 Presenter



Laurie Van Egeren

Assistant Provost for University-Community Partnerships
Michigan State University

8:45 AM

Plenary Session: Context and Prospects for Community-Engaged Scholarship with Indigenous Communities

🕒 8:45 AM - 9:45 AM, Oct 5

📍 Big Ten ABC (Lobby Level)

Plenary Sess...

There is growing interest among scholars, professional practitioners, and students in learning more about the issues, concerns, and opportunities surrounding community-engaged scholarship in collaboration with tribes and native communities. In this session, a knowledgeable nationally noted speaker and faculty discussant will explore and offer insights about the context of historical relationships between native people, universities, and academic researchers, and what prospects it shapes for building strong and ethical collaborative relationships with tribes and native partners today.

👤 Speaker



Karen Diver

Senior Advisor to the President for Native American Affairs
University of Minnesota

👤 Discussant



Gordon Henry

Audrey and John Leslie Endowed Chair in North American Indian and Indigenous Literary Studies
Michigan State University

9:00 AM

ESC Conference Bookstore

🕒 9:00 AM - 3:30 PM, Oct 5

📍 Galaxy Room (Lobby Level)

10:00 AM

Symposium Session

🕒 10:00 AM - 11:00 AM, Oct 5

📍 103 AB (Lobby Level)

Symposiu...

- Reclaiming Civic Agency Through Urban Permaculture Design
- Brain Day at UA: Targeting Brain Health Disparities through Community-Engaged Practice

Speakers



Emma Clopton
Lehigh University



Julie Wright
Gryphon/Residential Advisor
Lehigh University



Isabelle Spirk
Lehigh University



Cate Adams
Lehigh University



Courtney Helfrecht
Assistant Professor
The University of Alabama



Jessica Wallace
University of Alabama

2 Subsessions

● Reclaiming Civic Agency Through Urban Permaculture Design

🕒 10:00 AM - 11:00 AM, Oct 5

📍 103 AB (Lobby Level)

● Brain Day at UA: Targeting Brain Health Disparities Through Community-Engaged Practice

🕒 10:00 AM - 11:00 AM, Oct 5

📍 103 AB (Lobby Level)

Symposium Session

🕒 10:00 AM - 11:00 AM, Oct 5

📍 106 (Lobby Level)

Symposiu...

- A College of Pharmacy Tele-Based Approach to Addressing Health Equity
- Dismantling Stereotypes and Discrimination: Community-Engaged Learning and Social Determinants of Health

🚩 Speakers



Raven Jackson

Clinical Associate Professor
Xavier University of Louisiana



Sara Kaylor

University Of Alabama



Susan Welch

University of Alabama



Emefa Butler

CHOICE Resource Center



Halle Law

Student
University of Alabama



Olivia Parsons

University of Alabama



Andrew Kiepek

Student
University of Alabama

2 Subsessions

● **A College of Pharmacy Tele-Based Approach to Addressing Health Equity**

🕒 10:00 AM - 11:00 AM, Oct 5

📍 106 (Lobby Level)

● **Dismantling Stereotypes and Discrimination: Community-Engaged Learning and Social Determinants of Health**

🕒 10:00 AM - 11:00 AM, Oct 5

📍 106 (Lobby Level)

Symposium Session

🕒 10:00 AM - 11:00 AM, Oct 5

📍 Michigamme (Garden Level)

Symposiu...

- Sparking Civic-Mindedness and Institutionalizing Engagement Through a Student Engagement Grant Program
- For Students, By Students: Incorporating Student Voice into Community-Engaged Learning Programming and Practice
- Strengthening Community-Engaged Research with Collaboration: Support from Local Student Assistants

🗣️ Speakers



Lindsey Payne

Assistant Professor of Practice Environmental & Ecological Engineering
Purdue University



Carly Evich

Graduate Assistant for Service-Learning
Purdue University



Stephanie Brewer

MSU Center for Community Engaged Learning



Michelle Snitgen

Michigan State University



Megan Littrell

CIRES Education & Outreach



Kelsey Johnston

Graduate Student
Western Colorado University



Christine Okochi

CIRES Education and Outreach



Katie Boyd

Education & Outreach Associate, Evaluator, Researcher
CIRES Education & Outreach/University of Colorado Boulder



Anne Gold

CIRES Education and Outreach



Brigitta Rongstad Strong

CIRES Education and Outreach

3 Subsessions

● **Sparkling Civic-Mindedness and Institutionalizing Engagement Through a Student Engagement Grant Program**

🕒 10:00 AM - 11:00 AM, Oct 5

📍 Michigamme (Garden Level)

● **For Students, By Students: Incorporating Student Voice into Community-Engaged Learning Programming and Practice**

🕒 10:00 AM - 11:00 AM, Oct 5

📍 Michigamme (Garden Level)

● **Strengthening Community-Engaged Research with Collaboration: Support from Local Student Assistants**

🕒 10:00 AM - 11:00 AM, Oct 5

📍 Michigamme (Garden Level)

Energy Boosts: Building Periodic Professional Development Opportunities for Boundary Spanners

🕒 10:00 AM - 11:00 AM, Oct 5

📍 101 (Lobby Level)

Roundtab...

Opportunities for professional development beyond annual conferences have been slow to develop for outreach and engagement professionals. How do we continue to find ways to energize our work? Join us to share ideas and innovative approaches on how to build meaningful opportunities to enhance our practice and strengthen our networks.

🗨️ Speakers



Susan Harden
UNC Charlotte



Jeanne McDonald
Associate Director, Office for Outreach and Engagement
University of Colorado Boulder

Best Practices for Experiential Distance Learning With(in) Native Communities

🕒 10:00 AM - 11:00 AM, Oct 5

📍 62 (Garden Level)

Roundtab...

This roundtable session aims to explore barriers to and innovative solutions for distance education in Indigenous communities across a variety of contexts (institutional or community), ages (elementary, secondary, and university/adult), and modalities (hybrid-learning, online asynchronous, online synchronous).

🗨️ Speakers



Nicole Kau'i Merritt
University of Hawai'i - West O'ahu



Christy Mello
Associate Professor of Applied Cultural Anthropology
University of Hawai'i West O'ahu



Kirsten Vacca
Assistant Professor
University of Hawai'i - West O'ahu

Using Mobile Technology for Engagement: A Relationship Education Case Discussion

🕒 10:00 AM - 11:00 AM, Oct 5

📍 102 (Lobby Level)

Roundtab...

Technology offers opportunities for adaptive engagement that increase access to research-based information for diverse public audiences. Accordingly, we will discuss how online communication can facilitate translation of research that is tailored to public needs and broaden the impacts of scholars' work using MyRelevate.com as a specific example.

🗨️ Speakers



Kale Monk
Associate Professor
University of Missouri



Amber Vennum
Assistant Professor
Kansas State University

Public Writing for Impact: The Community Writing Center

🕒 10:00 AM - 11:00 AM, Oct 5

📍 Willy (Lobby Level)

Panel

The East Lansing Public Library and the Writing Center at Michigan State reimagined their partnership for increased sustainability and impact in co-creating the Community Writing Center. Informed by an asset-based community engagement framework, we share how the CWC builds upon respective strengths in amplifying local voices through community writing initiatives.

🗣️ Speakers



Grace Pregent

Interim Director of the Writing Center
Michigan State University



Angelo Moreno

East Lansing Public Library

Ethical Considerations of Artificial Intelligence for Academic Publishing in Community Engagement

🕒 10:00 AM - 11:00 AM, Oct 5

📍 Red Cedar B (Lobby Level)

Panel

This interactive panel session will feature members of the Editorial Board, Advisory Board, and Leadership Team of the Journal of Community Engagement and Scholarship (JCES) engaging in conversation about the ethical considerations of academic publishing in community engagement during the age of artificial intelligence.

🗣️ Speakers



Andrew Pearl

Director of Community Engagement Research and Publications
University of Alabama



Constance Beecher

Associate Professor
Iowa State University



Katherine Adams

Assistant Professor
University of North Georgia



Tammy Martin

Hawaii Pacific University



Darren Lortan

HOD: Mathematics
Durban University of Technology

Community Collaborations: Changing Our Built World, Changing Our Research

🕒 10:00 AM - 11:00 AM, Oct 5

📍 61 (Garden Level)

Panel

We are often oblivious to the built environment that we move through, but how can we help communities learn from, engage with, and change the built environment around us? This panel explores community-engaged scholarship on climate resiliency; crime; homelessness and informal housing; and how engagement with communities informed their research.

🗣️ Speakers



Holly Madill
Michigan State University



Noah Durst
Associate Professor of Urban and Regional Planning
Michigan State University



Deyanira Nevarez Martinez
Assistant Professor of Urban and Regional Planning
Michigan State University



Linda Nubani
Michigan State University



Wonmin Sohn
Assistant Professor
Michigan State University

Empowering Youth Through Community Engagement

🕒 10:00 AM - 11:00 AM, Oct 5

📍 104 AB (Lobby Level)

Interactive Work...

This interactive presentation shares the four-year evolution of a rural Youth Health Council. Partnering high schoolers with a university class, we empowered all students to develop, deliver, and evaluate content to support themselves and their communities. Learn about the impact on youth and tools supporting replication in your communities.

🗣️ Speakers



Malea Huffman
Extension Educator, 4-H Youth Development
Purdue University



Deb Getz
Indiana University - Bloomington



Kayla Smock
Healthy Community Ambassador
Purdue Extension Community Development

Land-Grant Engagement: Diminishing Town and Gown 2.0

🕒 10:00 AM - 11:00 AM, Oct 5

📍 Centennial AB (Lobby Level)

Interactive Work...

The trinity of the land-grant university is research, teaching, and outreach. While research and teaching are well-defined, the concept “engagement” is still quite nebulous. Outreach across universities is often inconsistent, ranging from beneficial to detrimental. Therefore, we will continue robust discussions to explore effective models of community engagement.

👤 Speakers



Bryan Hains
Associate Professor
University of Kentucky



Kristina Hains
University of Kentucky

Co-Creating CEL Curricula Through Human-Centered Design: U-Arizona's Experiential Learning Design Accelerator

🕒 10:00 AM - 11:00 AM, Oct 5

📍 105 AB (Lobby Level)

Interactive Work...

This workshop will describe the Experiential Learning Design Accelerator at the University of Arizona and its impact on our campus and local communities. Workshop participants will learn and apply the mindsets, concepts, and specific steps in a human-centered design process to identify new opportunities for community-engaged teaching and learning.

👤 Speaker



Annie Kurtin

Mobilizing Youths' Engagement in Democratic Practices Through Arts-Based Participatory Programs

🕒 10:00 AM - 11:00 AM, Oct 5

📍 Corniche (Second Level)

Interactive Work...

This workshop features a youth program model, 4-H Portraits of Home, and showcases how arts-based and experiential pedagogy can facilitate youth engagement with each other, their communities, and critical issues. Workshop participants will experience arts-based methods firsthand to gain knowledge and skills in this powerful, community-engaged methodology.

👤 Speakers



Erma Mujić
Research Assistant
University of Minnesota



Joanna Tzenis
Extension Educator & Associate Extension Professor, Extension Center for Youth Development
University of Minnesota



Ashley Purry
Extension Educator
University of Minnesota



Zhuldyz Amankulova
University of Minnesota



Heidi Fahning
Purdue University

11:15 AM

Symposium Session

🕒 11:15 AM - 12:15 PM, Oct 5

📍 103 AB (Lobby Level)

Symposiu...

- Health Risk Communication of Harmful Algal Blooms in Michigan Lakes
- Envisioning and Realizing Change Along an Urban Brownfield Corridor
- Building Resilient Communities: The Intersection of Climate Change, Local Governance, and Environmental Justice

🗣️ Speakers



Alex Benitez

Graduate Research Assistant in the Information and Media Program
Michigan State University



Abigail Bennett

Assistant Professor
Michigan State University



Heather Triezenberg

Board Of Advisors, Quantitative Fisheries Center, Dept. of Fisheries and Wildlife
Michigan State University



Diane Doberneck

Director of Faculty & Professional Development
Michigan State University



Mark Rey

Executive in Residence
Michigan State University



Blake Belanger

Associate Professor
Kansas State University



Maggie Belanger

Kansas State University



Jennifer Clancey

KSU TAB Services Coordinator for EPA Region 7
Kansas State University



Susmita Rishi

Assistant Professor
Kansas State University



Graham Diedrich

Public Policy Learning Assistant
Michigan State University

3 Subsessions

● **Health Risk Communication of Harmful Algal Blooms in Michigan Lakes**

🕒 11:15 AM - 12:15 PM, Oct 5

📍 103 AB (Lobby Level)

● **Envisioning and Realizing Change Along an Urban Brownfield Corridor**

🕒 11:15 AM - 12:15 PM, Oct 5

📍 103 AB (Lobby Level)

● **Building Resilient Communities: The Intersection of Climate Change, Local Governance, and Environmental Justice**

🕒 11:15 AM - 12:15 PM, Oct 5

📍 103 AB (Lobby Level)

Symposium Session

🕒 11:15 AM - 12:15 PM, Oct 5

📍 106 (Lobby Level)

Symposiu...

- Using Community Science to Address a Proposed Mine in Andros
- Community-Based Participatory Research in Wahi Kupuna Stewardship
- Community Engagement with Isolated, Off-Grid Communities in the Brazilian Amazon

👤 Speakers



Sophie Huss

Graduate Assistant
Michigan State University



Kirsten Vacca

Assistant Professor
University of Hawai'i - West O'ahu



Rafael Cavalcanti Lembi

PhD Student
Michigan State University



Maria Claudia Lopez

Michigan State University



Igor Cavallini Johansen

Postdoctoral research fellow
University of Campinas



Emilio Moran

Michigan State University

3 Subsessions

● **Using Community Science to Address a Proposed Mine in Andros**

🕒 11:15 AM - 12:15 PM, Oct 5

📍 106 (Lobby Level)

● **Community-Based Participatory Research in Wahi Kupuna Stewardship**

🕒 11:15 AM - 12:15 PM, Oct 5

📍 106 (Lobby Level)

● **Community Engagement with Isolated, Off-Grid Communities in the Brazilian Amazon**

🕒 11:15 AM - 12:15 PM, Oct 5

📍 106 (Lobby Level)

Symposium Session

🕒 11:15 AM - 12:15 PM, Oct 5

📍 Michigamme (Garden Level)

Symposiu...

- Impacting Food Security and Health Through Community Gardens
- Juvenile Justice Staff Perceptions of Community Partners on Facility Climate and Youth Behaviors

🗨️ Speakers



Jo Britt-Rankin

University of Missouri



Kimberly Keller

University of Missouri



Nicole Prewitt

Director of Programs and Partnerships for Community Engagement
The University of Alabama



Kristine Jolivette

University of Alabama



Kimberly Odom

University of Alabama



June Preast

University of Alabama



Stephanie Shelton

University of Alabama



Olivia Hester

Research Asst. Professor
University of Alabama



Sara Sanders

University of Alabama



Wenchao Ma

Assistant Professor
University of Alabama

2 Subsessions

● **Impacting Food Security and Health Through Community Gardens**

🕒 11:15 AM - 12:15 PM, Oct 5

📍 Michigamme (Garden Level)

● **Juvenile Justice Staff Perceptions of Community Partners on Facility Climate and Youth Behaviors**

🕒 11:15 AM - 12:15 PM, Oct 5

📍 Michigamme (Garden Level)

The Faculty Fellows Program: Making Space to (Re)Create Community Engagement

🕒 11:15 AM - 12:15 PM, Oct 5

📍 101 (Lobby Level)

Roundtab...

As institutions pursue their public mission, it's important they support and cultivate faculty who embrace community engagement. However, faculty commitments often present challenges to those wanting to implement community-engaged teaching and research. This roundtable focuses on a program that allows educators across Indiana to employ community-engaged practices for positive change.

👤 Speakers



Laura Weaver

Graduate Student
Ball State University



Mark Pike

Indiana University-Purdue University - Indianapolis

Essential Practices for Rural Community Development: Comparing and Contrasting Extension models in Different Countries

🕒 11:15 AM - 12:15 PM, Oct 5

📍 62 (Garden Level)

Roundtab...

This session will focus on: (1) examining agricultural and rural engagement extension services in different countries; and (2) considering successful/unsuccessful implementation of U.S. agricultural extension services in other countries. The presenters – Romanian faculty – seek exploratory conversations as they build an engaged network of experts to foster rural community development.

👤 Speakers



Daniel Chiciudean

University of Agricultural Sciences and Veterinary Medicine - Cluj-Napoca



Daniyar Memedemin

Assistant Professor
Ovidius University of Constanta



Andreea D. Ona

Fulbright RAF Visiting Research Scholar - Agricultural Extension Services
University of Georgia



Mihai Şuteu

University of Agricultural Sciences and Veterinary Medicine - Cluj-Napoca



Alina Zaharia

Fulbright scholar
University of Georgia, US

Going Virtual for Parent Education to Enrich Language and Literacy

🕒 11:15 AM - 12:15 PM, Oct 5

📍 102 (Lobby Level)

Roundtab...

The COVID-19 pandemic created significant challenges for families who have historically had less access to educational programming. The current study asked families to share their experiences accessing educational programming and examined the impact of two programs designed to increase children's language and literacy delivered virtually in English or Spanish.

🗣️ Speaker



Constance Beecher

Associate Professor
Iowa State University

Journal Editors Panel

🕒 11:15 AM - 12:15 PM, Oct 5

📍 Auditorium

Panel

A panel discussion among editors of journals publishing community-engaged scholarship. The editors will discuss the mission and scope of their journals. They will also offer insights into publishing scholarship in professional, academic journals.

🗣️ Panelist



Shannon Brooks

Director, Office of Service-Learning
The University of Georgia



Marybeth Lima

LSU



Savathrie Margie Maistry

Rhodes University



Cat Paterson

Professor, Applied Medicine & Rehabilitation
Indiana State University



Nicole Springer

Chief Equity Officer and Senior Director of Professional Development & Scholarship
Campus Compact

🗣️ Moderator



Andrew Furco

University of Minnesota, Twin Cities

Irrepressible Soul: Promoting Arts Equity Through Creative Collaboration

🕒 11:15 AM - 12:15 PM, Oct 5

📍 Willy (Lobby Level)

Panel

Irrepressible Soul is a collaborative project, introspective exhibition, and community-engaged programming centered around recognizing and celebrating the complex, intersectional Black experience and identity. Presenters will discuss what it means to mobilize efforts that promote arts equity, accessibility, and authentic collaborations to remain culturally responsive to the dynamic needs of communities.

🔊 Speakers



Terron Banner

Lecturer
The Ohio State University



Iyana Hill

The Ohio State University



Mario Hairston

The Ohio State University



Christopher Hearn

The Ohio State University

Mobilizing an Interdisciplinary Team of Community Engagement Professionals in a Collaborative Book Review Process

🕒 11:15 AM - 12:15 PM, Oct 5

📍 61 (Garden Level)

Panel

This panel, including members of an interdisciplinary learning community focused on critical community-engaged learning, will discuss their journey of using a focused conversation method to write a book review collaboratively. They will highlight the book charting process used, as well as the joys and lessons learned from the experience.

🔊 Speakers



Stephanie Brewer

MSU Center for Community Engaged Learning



Michelle Snitgen

Michigan State University



Gina Tremonti Gembel

Michigan State University



Jada Phelps

Michigan State University



Taylor Martin

Research Associate
Michigan State University

Mobilizing Scholarship for Rural Community-Engaged Research

🕒 11:15 AM - 12:15 PM, Oct 5

📍 104 AB (Lobby Level)

Interactive Work...

The University of Georgia Rural Engagement Workshop creates partnerships for high-quality community-engaged research in rural Georgia communities, leading to collaborative research projects between academic faculty and outreach and extension partners throughout the state. This session will describe the program and share best practices for rural community-engaged research collaborations.

🗣️ Speakers



Sam Perren

Public Service Associate
University of Georgia



Brittany Adams-Pope

Public Service Faculty
University of Georgia

Improving Gender Equity in Higher Education in East Africa

🕒 11:15 AM - 12:15 PM, Oct 5

📍 Centennial AB (Lobby Level)

Interactive Work...

This is a four-stage collaborative-scoping project between Makerere University (Uganda) and Higher Education Resource Services - East Africa, funded by Bill and Melinda Gates Foundation. The goal is to develop a robust and feasible program to enhance gender equity in higher education institutions and a scorecard to assess performance.

🗣️ Speakers



Margaret khaita

Mississippi State university



Rhoda Wanyenze

Makerere University



Euzobia Mugisha Baine

Makerere University



Naomi Lumutenga

Executive Director
HERS-East Africa

Leveraging Generative AI to Amplify Social Impact

🕒 11:15 AM - 12:15 PM, Oct 5

📍 105 AB (Lobby Level)

Interactive Work...

Love it or hate it – generative AI is here to stay. This workshop will encourage participants to suspend disbelief, judgment, and intellectual debate for just an hour and explore how they can leverage tools such as ChatGPT and DALL-E2 to amplify and accelerate the impact of their social ventures.

🗣️ Speakers



Khanjan Mehta

Vice Provost for Creative Inquiry
Lehigh University



Bill Whitney

Assistant Vice Provost for Experiential Learning Programs
Lehigh University

Decade of Mobilizing Change: From Pilot to \$2M Budgets

🕒 11:15 AM - 12:15 PM, Oct 5

📍 Corniche (Second Level)

Interactive Work...

In 2011, a pilot program called Oregon Open Campus was introduced at ESC in East Lansing. Three of us were hired to pilot community engagement and share our vision. We are excited to return – sharing the Open Campus and Juntos journey, how we grew to 25 professionals, our impacts, failures, and the future.

👤 Speakers



Jeff Sherman-Duncan

Oregon State



Jennifer Boyle

OSU Open Campus Manager
Oregon State University



Rebecca Munn

Open Campus Coordinator
Oregon State University



David Gutierrez

Oregon State University



Emily Chavez-Romero

Oregon State University

12:30 PM

Lunch

🕒 12:30 PM - 2:00 PM, Oct 5

📍 Big Ten ABC (Lobby Level)

Plenary Session

Meals and Receptions

1:00 PM

Plenary Session: Community-University Engagement: Perspectives from the Global Majority

🕒 1:00 PM - 2:00 PM, Oct 5

📍 Big Ten ABC (Lobby Level)

Plenary Sess...

Panelists working in Africa, Asia, South America, and North America will draw on their diverse experiences to speak to similarities, differences, best practices, and place-based innovations that they are advancing within community-university engagement toward building sustainable partnerships. They will address the co-construction and co-production of knowledge, and how this approach is generating and sustaining social centric solutions from within communities themselves. Through their different approaches to community-engaged research, panelists will demonstrate pragmatic efforts to embed the community into the university and make the case for knowledge democracy, open science, and the transformation of higher education. Among other topics, the panelists will discuss place-based methodological and epistemological innovations and [UNESCO's Knowledge for Change \(K4C\)](#), [International Consortium for Education in Community-Based Research](#) and Community Scholars Fund.

Panelist



Irma Flores
University of Los Andes



Budd Hall
UNESCO Chair in Community-Based Research and Social Responsibility in Higher Education
University of Victoria



Nkatha Mercy
Community Engaged Research Assistant and Doctoral Student, Department of Geology and Geography
West Virginia University



David Monk
Lecturer and Coordinator, Centre for Community Based Participatory Research
Gulu University - Gulu, Uganda



Mahazan Abdul Mutalib
UNIVERSITI SAINS ISLAM MALAYSIA (USIM)



René Oosthuizen
Rhodes University South Africa

2:15 PM

Symposium Session

🕒 2:15 PM - 3:15 PM, Oct 5

📍 103 AB (Lobby Level)

Symposiu...

- Preparing High School Students for College Success
- First Steps Towards Mobilizing University Resources to Support Schools
- Mobilizing Leaders: The Parent Teacher Leadership Academy

Speakers



Sara Hall
Assistant Director
Binghamton University



Naorah Rimkunas
Assistant Professor of Community Schools
Binghamton University



Andrea Ziegler
Director for Community Education
The University of Alabama



Blake Berryhill
University of Alabama



Elizabeth Wilson
University of Alabama

2 Subsessions

● **First Steps Towards Mobilizing University Resources to Support Schools**

🕒 2:15 PM - 3:15 PM, Oct 5

📍 103 AB (Lobby Level)

● **Mobilizing Leaders: The Parent Teacher Leadership Academy**

🕒 2:15 PM - 3:15 PM, Oct 5

📍 103 AB (Lobby Level)

Symposium Session

🕒 2:15 PM - 3:15 PM, Oct 5

📍 106 (Lobby Level)

Symposiu...

- Disability Awareness Program for Young Children: A Community Engagement Program at Local Schools
- Expanding a Sport Leadership Program for Incarcerated Youth: Winning Ways to Build a Partnership
- Conversation, Connection and Commitment: Adapting a Positive Youth Development Program for Young People in Colombia

👤 Speakers



Jingyuan Zhang

Graduate Student
Purdue University



Yan Ping Xin

Professor
Purdue University



Jenn Jacobs

Associate Professor
Northern Illinois University



Gabrielle Bennett

Doctoral Researcher
Northern Illinois University



Zachary Wahl-Alexander

Associate Professor
Northern Illinois University



Sara Dodd

Executive Director, Center for Adolescent Resiliency
Texas Tech University



Paulina Velez

Assistant Professor
Texas Tech University



Nadia Moratto

Universidad CES



Gloria Gonzales

Center for Adolescent Resiliency-Director-United Future Leaders
Texas Tech University



Melanie Quick

Texas Tech University

3 Subsessions

● **Disability Awareness Program for Young Children: A Community Engagement Program at Local Schools**

🕒 2:15 PM - 3:15 PM, Oct 5

📍 106 (Lobby Level)

● **Expanding a Sport Leadership Program for Incarcerated Youth: Winning Ways to Build a Partnership**

🕒 2:15 PM - 3:15 PM, Oct 5

📍 106 (Lobby Level)

● **Conversation, Connection and Commitment: Adapting a Positive Youth Development Program for Young People in Colombia**

🕒 2:15 PM - 3:15 PM, Oct 5

📍 106 (Lobby Level)

Symposium Session

🕒 2:15 PM - 3:15 PM, Oct 5

📍 Michigamme (Garden Level)

Symposiu...

- Bluegrass Mountain Bike Accessibility Initiative: Expanding Diversity, Equity, and Inclusion for People Living with Disabilities
- Intertwined: Tension and Balance Within ArtSci Collaborations

👤 Speakers



John C. Hill

HDI Disability Program Specialist: Survey Project Coordinator
University of Kentucky



Laura Butler

University of Kentucky



Gabe Duggan

Assistant Professor
East Carolina University

2 Subsessions

● **Bluegrass Mountain Bike Accessibility Initiative: Expanding Diversity, Equity, and Inclusion for People Living with Disabilities**

🕒 2:15 PM - 3:15 PM, Oct 5

📍 Michigamme (Garden Level)

● **Intertwined: Tension and Balance Within ArtSci Collaborations**

🕒 2:15 PM - 3:15 PM, Oct 5

📍 Michigamme (Garden Level)

Open Doors to the Arts: Immersive Learning for Students with Disabilities

🕒 2:15 PM - 3:15 PM, Oct 5

📍 101 (Lobby Level)

Roundtab...

Our project aims to increase arts exposure for students with emotional/behavioral disorders and autism by using a shared immersive classroom. The Immersive Learning Center presents 360° content for students to experience art without the threat of overstimulation, eventually preparing them for community-based art and social experiences.

🗣️ Speakers



Y Lam
Lehigh University



Emily Tsao
Lehigh Valley Social Impact Research Fellow
Lehigh University



Verona Collins
Lehigh University



Micaela Cortese
Lehigh University



Edyn Marsland
Lehigh University

Healthier Together: A Collaborative Effort to Improve Health in Rural Communities

🕒 2:15 PM - 3:15 PM, Oct 5

📍 102 (Lobby Level)

Roundtab...

Addressing obesity requires multilevel interventions that address knowledge and clinical care, as well as social, political, and environmental structures. The Healthier Together initiative implements these strategies for obesity prevention in rural counties through engaging community members and partners as well as an interdisciplinary team within the university system.

🗣️ Speakers



Christina Garner
University of Georgia



Shanda Ashley
University of Georgia

Science for Society: Amplifying NOAA's Impact Through Great Lakes Partnerships

🕒 2:15 PM - 3:15 PM, Oct 5

📍 Red Cedar B (Lobby Level)

Panel

This panel will highlight some of NOAA's Great Lakes regional core partners and their various approaches to, and roles in, climate- and environmental-related engagement. Panelists will discuss how researchers and practitioners collaborate across organizational boundaries to conduct and support research that amplifies NOAA's impact on the region's communities and ecosystems.

Speakers



Riley Ravary
University of Michigan



Tori Field
Sustained Engagement Specialist
GLISA | NOAA's Great Lakes Climate Adaptation Partnership Team - University of Michigan School for Environment and Sustainability



David Fitch
Great Lakes Observing System



Chiara Zuccarino-Crowe
Great Lakes outreach specialist and NOAA liaison
Michigan Sea Grant



Megan D
CIGLR



Jennifer Day
NOAA Great Lakes Environmental Research Laboratory

Veterinary Medicine's Role in Collaborative and Transdisciplinary Engagement

🕒 2:15 PM - 3:15 PM, Oct 5

📍 61 (Garden Level)

Panel

Veterinary medicine holds strong historical roots in community engagement. Recently, however, the veterinary profession become involved in a diverse range of traditional outreach and engagement efforts that span educational disciplines and institutions. Cross-disciplinary collaborations may prove key to successful engagement efforts and outcomes in the realm of veterinary education.

Speakers



Ron Orchard
Kansas State University College of Veterinary Medicine



Jenny weisent
University of Tennessee



Cassidy Moreau
USD 383



Brandon Kliewer
Associate Professor of Civic Leadership in the Staley School of Leadership
Kansas State University

A Mixed-Methods Approach to Evaluating Sustained Community Partnership

🕒 2:15 PM - 3:15 PM, Oct 5

📍 104 AB (Lobby Level)

Interactive Work...

Demonstrating a strong return on investment to partners is a critical piece of sustaining community partnerships. At the same time, many major community impacts are not easily quantified. In this workshop, faculty from the UGA Archway Partnership will share their innovative mixed-methods approach to evaluating long-term community partnerships.

🔊 Speakers



Sam Perren
Public Service Associate
University of Georgia



Rosanna Cruz-Bibb
Public Service Faculty
University of Georgia - Archway Partnership

Orienting Community Engagement Toward Reparations

🕒 2:15 PM - 3:15 PM, Oct 5

📍 105 AB (Lobby Level)

Interactive Work...

The session introduces participants to a new national resource and networking hub, Higher Education Reparations Engagement, to imagine what community engagement could look like if it were done through a lens of retrospective justice to address current social and racial injustice.

🔊 Speakers



John Saltmarsh
University of Massachusetts - Boston



Timothy Eatman
Inaugural Dean, Honors Living-Learning Community
Rutgers University - Newark



George Luc
Co-Founder and CEO of GivePulse
GivePulse



Marisol Morales
Executive Director, Carnegie Elective Classifications
American Council on Education

Nurturing Required: Sustainable Partnerships

🕒 2:15 PM - 3:15 PM, Oct 5

📍 Centennial AB (Lobby Level)

Interactive Work...

Partnerships make or break the experience for all involved, so it makes sense that it can take time and other resources to cultivate a relationship. Hear from faculty and staff at a rural university on how their investments in partnering have paid off.

🗣️ Speakers



Michelle Garraway

Outreach and Engagement Coordinator
Mississippi State University



Alexis Hampton

Program Manager - New Supply MS
Wonderschool



Caroline Kobia

Associate Professor| Program Leader, Fashion Design and Merchandising School of Human Sciences
Mississippi State University



Silvina Lopez Barrera

Mississippi State University

The Action Mapping Project: Community Mapping for Youth Engagement and Neighborhood Change

🕒 2:15 PM - 3:15 PM, Oct 5

📍 Centennial C (Lobby Level)

Interactive Work...

The Action Mapping Project at University of Washington - Tacoma leverages participatory sketch mapping and spatial modeling to engage youth in urban planning and decision-making processes. In the South Puget Sound, the project has organized partnerships with school districts, planning agencies, and policymakers to facilitate youth-centered placemaking activities.

🗣️ Speaker



Matt Kelley

Associate Professor
University of Washington Tacoma

Six Degrees of Collaboration: Planning Engagement with State Agencies

🕒 2:15 PM - 3:15 PM, Oct 5

📍 Corniche (Second Level)

Interactive Work...

Engagement is increasingly recognized as an important component of conservation and management. We will introduce our state agency-partnership history and context, then lead participants through an interactive session on different tools for successful planning and implementation of engagement with a range of stakeholders and community partners, transferable to many situations.

🔍 Speakers



Alexa Warwick
Wildlife Engagement Specialist
Michigan State University



Diane Doberneck
Director of Faculty & Professional Development
Michigan State University



Emily Pomeranz
Department of Natural Resources



Barbara Avers
Michigan DNR

3:30 PM

Symposium Session

🕒 3:30 PM - 4:30 PM, Oct 5

📍 103 AB (Lobby Level)

Symposiu...

- Student Mental Health and Wellness: Pedagogical Implications for Community-Engaged Teaching and Learning
- Mental Health Court: Changes to Impact Health Disparities and Society
- Improving Access to Mental Health Care in Rural Youth

🔍 Speakers



Stephanie Brewer
MSU Center for Community Engaged Learning



Mitzi Pestaner
East Carolina University



Kelsey McCollum
Minnesota State University, Mankato



Jennifer Marr
Minnesota State University

3 Subsessions

● **Student Mental Health and Wellness: Pedagogical Implications for Community-Engaged Teaching and Learning**

🕒 3:30 PM - 4:30 PM, Oct 5

📍 103 AB (Lobby Level)

● **Mental Health Court: Changes to Impact Health Disparities and Society**

🕒 3:30 PM - 4:30 PM, Oct 5

📍 103 AB (Lobby Level)

● **Improving Access to Mental Health Care in Rural Youth**

🕒 3:30 PM - 4:30 PM, Oct 5

📍 103 AB (Lobby Level)

Symposium Session

🕒 3:30 PM - 4:30 PM, Oct 5

📍 106 (Lobby Level)

Symposiu...

- Community Engagement in Chile: Recent Academic Debate, Empirical Research, and an Interpretation of an Ongoing Reform
- The Educational Stoplight
- Advancing Women's Leadership in East Africa's Universities Through Engaged Scholarship

👤 **Speakers**



Matias Flores
Cornell University



Martin Burt
Fundacion Paraguaya



Lourdes Aguero
Fundación Paraguaya



Rajalakshmi Nadadur
Michigan State University



Elizabeth Nansubuga
Lecturer
Makerere University



Naomi Lumutenga
Executive Director
HERS-East Africa



Margaret khaita
Miississippi State university

3 Subsessions

● **Community Engagement in Chile: Recent Academic Debate, Empirical Research, and an Interpretation of an Ongoing Reform**

🕒 3:30 PM - 4:30 PM, Oct 5

📍 106 (Lobby Level)

● **The Educational Stoplight**

🕒 3:30 PM - 4:30 PM, Oct 5

📍 106 (Lobby Level)

● **Advancing Women's Leadership in East Africa's Universities Through Engaged Scholarship**

🕒 3:30 PM - 4:30 PM, Oct 5

📍 106 (Lobby Level)

Symposium Session

🕒 3:30 PM - 4:30 PM, Oct 5

📍 Michigamme (Garden Level)

Symposiu...

- Developing a Design Lab for Social Innovation and Sustainability
- Engagement in North Minneapolis: How the Office of Information Technology Works with UROC and our Communities
- Elements of Community-Engaged Development Projects for Sustainable Project Implementation

🔊 Speakers



Susan Melsop
Associate Professor
Ohio State University / Design



Sebastien Proulx
Associate Professor
The Ohio State University



William Nickley
Assistant Professor
The Ohio State University



James De Sota
U of M RJJ UROC



Cory Foss
Research Engineering and Architecture
University of Minnesota



Chibuzor Azubuike
Graduate Teaching Assistant
Kansas State University



Ernestina Wiafe
Graduate Teaching Assistant
Kansas State University

3 Subsessions

● **Developing a Design Lab for Social Innovation and Sustainability**

🕒 3:30 PM - 4:30 PM, Oct 5
📍 Michigamme (Garden Level)

● **Engagement in North Minneapolis: How the Office of Information Technology Works with UROC and Our Communities**

🕒 3:30 PM - 4:30 PM, Oct 5
📍 Michigamme (Garden Level)

● **Elements of Community-Engaged Development Projects for Sustainable Project Implementation**

🕒 3:30 PM - 4:30 PM, Oct 5
📍 Michigamme (Garden Level)

Engaging Early Learning Communities and Families in Sustainable Food Systems

🕒 3:30 PM - 4:30 PM, Oct 5
📍 101 (Lobby Level)

Roundtab...

Explore how a cross-disciplinary team embarked on a food systems journey with young children and families at one childcare center. From breaking ground to salvaging scraps, follow the journey as we created a simple garden for children and families and implemented a system for composting.

🗣️ Speakers



Meg Grivil
Assistant Professor
Eastern Kentucky University



Erin Eliassen
Eastern Kentucky University



Mary Sciaraffa
Professor
Eastern Kentucky University

Leveraging Engagement to Understand Youth Development Funding Ecosystems

🕒 3:30 PM - 4:30 PM, Oct 5

📍 62 (Garden Level)

Roundtab...

Youth Development Program (YDP) funding ecosystems have not been examined, resulting in incomplete understandings of how funding affects YDP structures and impacts. Our researcher-practitioner team will share results of our research on this topic before engaging attendees around how partnerships can scrutinize and transform funding ecosystems.

🗣️ Speakers



Amanda Case
Associate Professor
Purdue University



Jessica Hauser
Downtown Boxing Gym



Anthony Burrow
Associate Professor
Cornell University

Addressing Redlining, Race, and Real Estate Brick-by-Brick Through Community Engagement and Reinvestment

🕒 3:30 PM - 4:30 PM, Oct 5

📍 102 (Lobby Level)

Roundtab...

This presentation will describe community-focused efforts to address the devastating impact of redlining through engagement and activation of community members from the historically impacted area of the City of Omaha and other jurisdictions.

🗣️ Speakers



Terri Crawford
University of Nebraska



Julie Dierberger
University of Nebraska - Omaha

Shared Voices from a University and High School Partnership Developed to Co-Create a Pre-Student Teaching Clinical Experience

🕒 3:30 PM - 4:30 PM, Oct 5

📍 Willy (Lobby Level)

Panel

Partnerships between higher education and K-12 schools are an integral component of successful collaborations. This collaboration involved pre-student teaching clinical experiences and was designed to create mutual buy-in and benefit for a university program (students; faculty) and a local high school (students; faculty).

🗨️ Speakers



Mary Henninger

Illinois State University



Andrew Eberline

Associate Professor
Illinois State University



Maria Pessman

Physical Education Teacher
Illinois State University



Steve Paxson

Illinois State University



Gillian Musial

Illinois State University

Emerging Generations Z and A: The African American Male Youth Development Phenomenon

🕒 3:30 PM - 4:30 PM, Oct 5

📍 Red Cedar B (Lobby Level)

Panel

Emerging Generations Z and A is a model for Black male mentorship in public and private school sectors (K-12) led and facilitated by Black male doctors and professionals. This program is designed to mitigate the problem of Black youth lacking connectivity and relatability to Black men in the school system.

🗨️ Speakers



Randy Whetstone, Jr.

Program Director
University of Louisville



Jerron Jones

BMEN



Jonathan Tyes

Univeristy of Louisville School of Medicine

Student Community Engagement: Combatting Student Apathy From the Big Blue Bubble

🕒 3:30 PM - 4:30 PM, Oct 5

📍 61 (Garden Level)

Panel

Theory to practice has been a long-substantiated concept in higher education. However, due to the “inclusive resort” focus of universities, it has become more difficult to engage students within communities. Our student panel will discuss current dynamics associated with engagement from the academic “big blue bubble.”

👤 Speakers



Bryan Hains

Associate Professor
University of Kentucky



Kristina Hains

University of Kentucky



Reba Prather

University of Kentucky



Jamari Turner

Graduate Research Assistant
University of Kentucky



Ana Mitchell



Calvin Clark

University Of Kentucky



Gavin Cooper

University of Kentucky

Culturally Based Reciprocal Learning and Service: A Pathway for Transformation

🕒 3:30 PM - 4:30 PM, Oct 5

📍 105 AB (Lobby Level)

Interactive Work...

This presentation describes a collaborative effort between a private university and a community partner to create “cultural retreats” and their transformative impact. Social work students and faculty learned about the cultural and historical trauma to the land and the Indigenous people of Hawai‘i. In return, they engaged in service learning through mālama ‘āina (taking care of the land).

🗨️ Speakers



Tammy Martin
Hawaii Pacific University



Jocelyn Kawa'a
'Āina Wellness Academy



Ryan Eykel
Hawaii Pacific University



Vince Okada
BSW Program Chair & Assistant Professor
Hawaii Pacific University



Kala Kawa'a
'Āina Wellness Academy

Working as a Collective to Maximize Impact for K-12 Partners

🕒 3:30 PM - 4:30 PM, Oct 5

📍 Centennial AB (Lobby Level)

Interactive Work...

This interactive workshop showcases examples of how sustainable strategic partnerships can be formed across decentralized institutions when working collaboratively toward change. A multiunit partnership was created at the University of Michigan to strengthen and streamline K-12 services and to provide clearer direction and guidance to school and educational partners.

🗨️ Speakers



Catalina Ormsby
Associate Director, Center for Educational Outreach
University of Michigan



Kim Lijana
Director Center for Educational Outreach
University of Michigan



Neeraja Aravamudan
Director, Edward Ginsberg Center
University of Michigan



Darin Stockdill
Lecturer in Secondary Teacher Education
University of Michigan

Mobilizing Systems Change from the Inside Out

🕒 3:30 PM - 4:30 PM, Oct 5

📍 Centennial C (Lobby Level)

Interactive Work...

To co-produce sustainable systems change, engaged scholars must tap into innovation from communities they seek to help. This workshop features an ecosystem model that elevates the role of influencers and community as essential to institutions and systems. It demonstrates how UNC Charlotte applies the model through its Community Innovation Incubator.

🗣️ Speaker



Byron White
University of North Carolina - Charlotte

Participatory Research Design for Food Justice and System Change

🕒 3:30 PM - 4:30 PM, Oct 5

📍 Corniche (Second Level)

Interactive Work...

This interactive workshop offers participants an opportunity to advance their understanding of community-centered research design, and to brainstorm and receive feedback on their own ideas for future research. Presenters will focus on principles and methods for fostering immersive, imaginative collaboration that engages community participants as knowledge producers and change makers.

🗣️ Speakers



Emma Mullaney
Michigan State University



Renee V. Wallace
Executive Director | Project Portfolio Manager
FoodPLUS Detroit

4:30 PM

Conference Wrap-Up

🕒 4:30 PM - 5:00 PM, Oct 5

📍 Big Ten ABC (Lobby Level)

Plenary Sess...

6:00 PM

Informal Post-Conference Meet-Up

🕒 6:00 PM - 8:00 PM, Oct 5

📍 Jolly Pumpkin Café & Brewery

Meals and Recep...

Join us downtown East Lansing at [Jolly Pumpkin Café & Brewery](#). This meet-up is a pay-as-you-come adventure.