

Campus Compact Civic Action Plans: *A Diffusion of Innovation Perspective*

Andrew J. Pearl

CeeCee Johnson

Campus Compact



Campus Compact advances the public purposes of colleges and universities by deepening their ability to improve community life and to educate students for civic and social responsibility.

30th Anniversary Action Statement & Civic Action Planning

In recognition of its 30th Anniversary, Campus Compact asked member presidents and chancellors to join in signing an Action Statement, a declaration of shared commitment to the public purposes of higher education and a promise to develop a Campus Civic Action Plan to realize those purposes more fully.

- 457 Action Statement Signees
- 117 Civic Action Plans Submitted and Published
- Majority of campuses that committed to complete a Civic Action Plan were already highly engaged (Hahn, Bringle, & Hatcher, 2018)

(as of August 2019)



Research Questions

RQ1:

What determines the probability that an Campus Compact member institution will sign the Campus Compact Action Statement during the given time period?

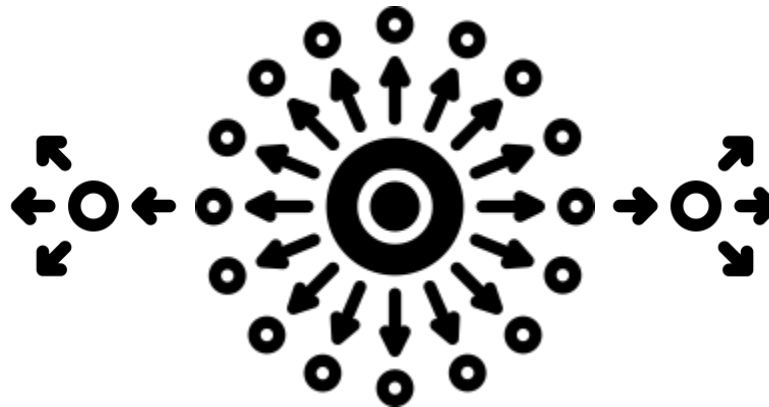
RQ2:

What determines the probability that a signee of the Action Statement completes and submits and Civic Action Plan?

Diffusion of Innovation / Policy Diffusion

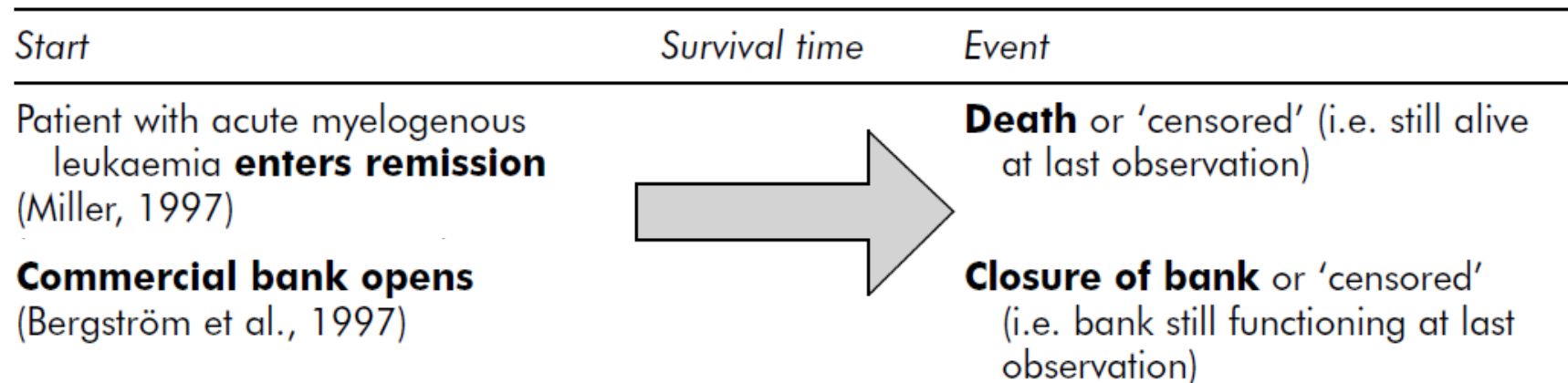
An organization's decision to adopt a policy is influenced by actions taken by other organizations

➤ Both internal and regional influences play a role

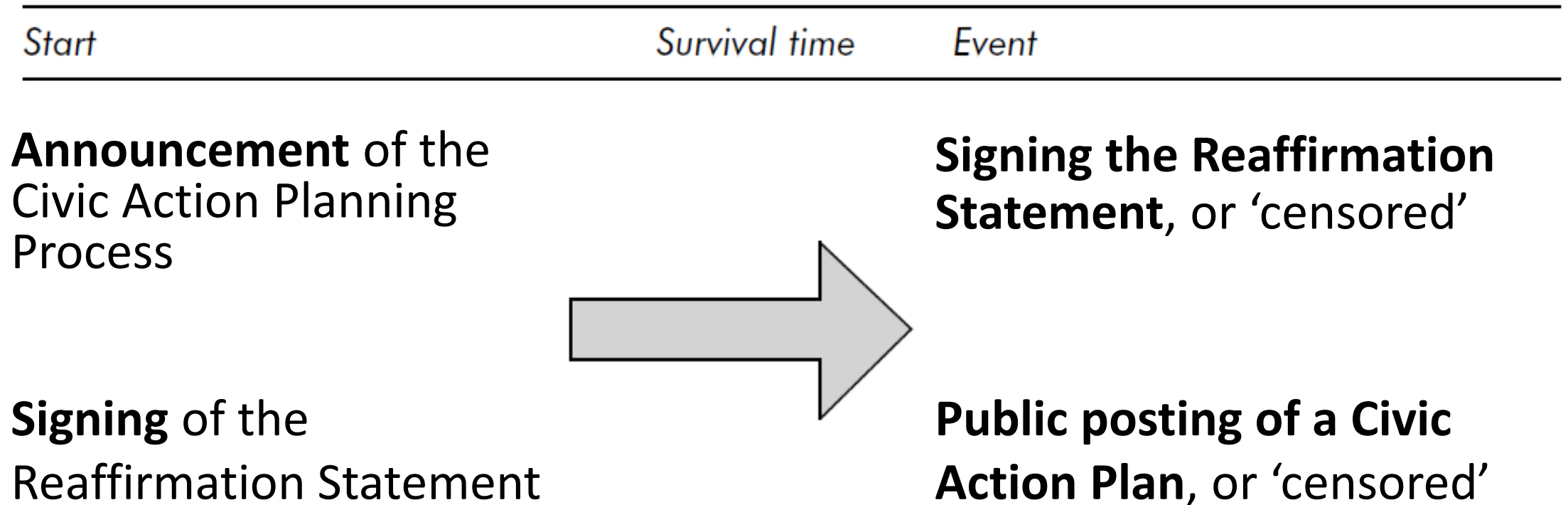


Survival Analysis/ Event History Analysis

- Interested in the timing and duration until the occurrence of an event
- Hazard rate is the conditional probability that the event occurs at a particular time



Our Models

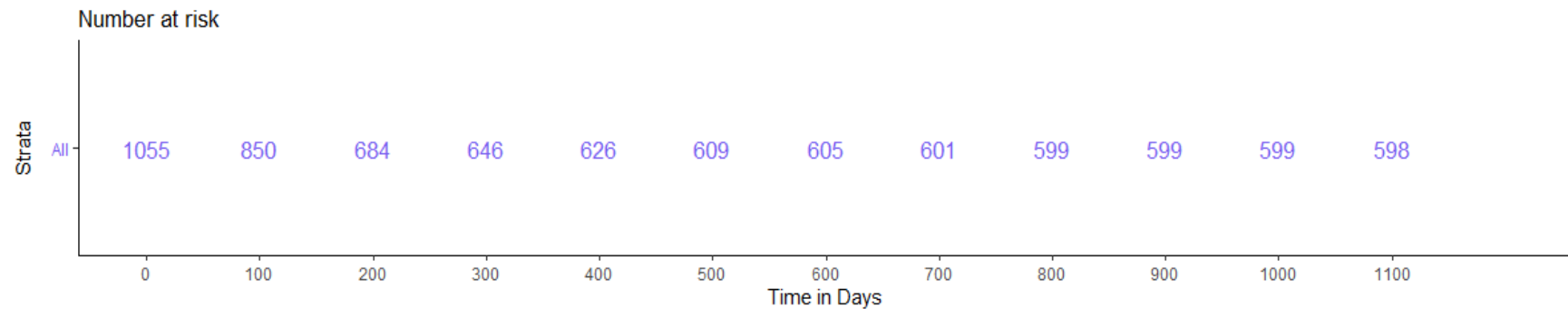
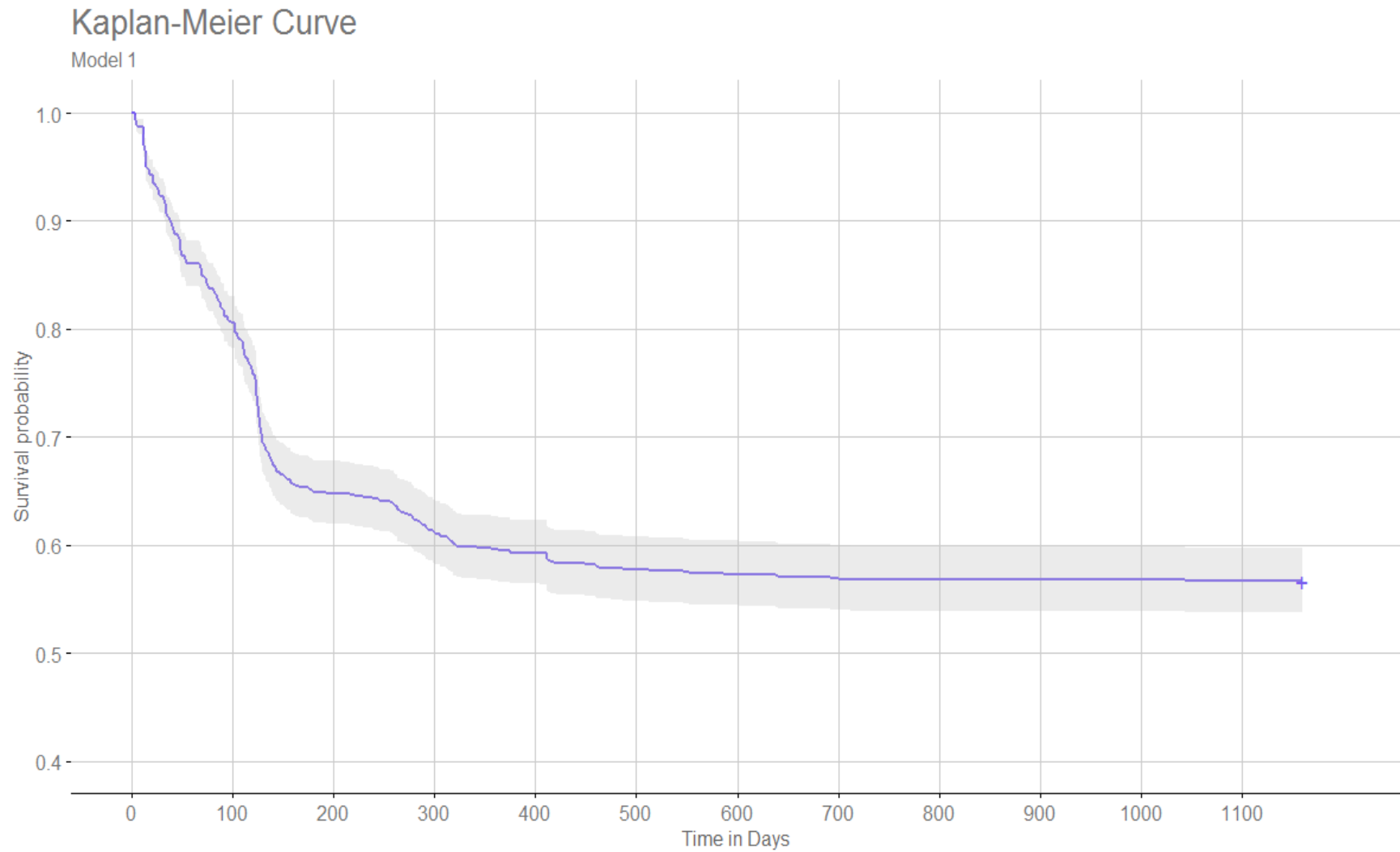


Independent Variables

Carnegie Classification, State/Regional Compact, Control, Land-Grant status



Findings

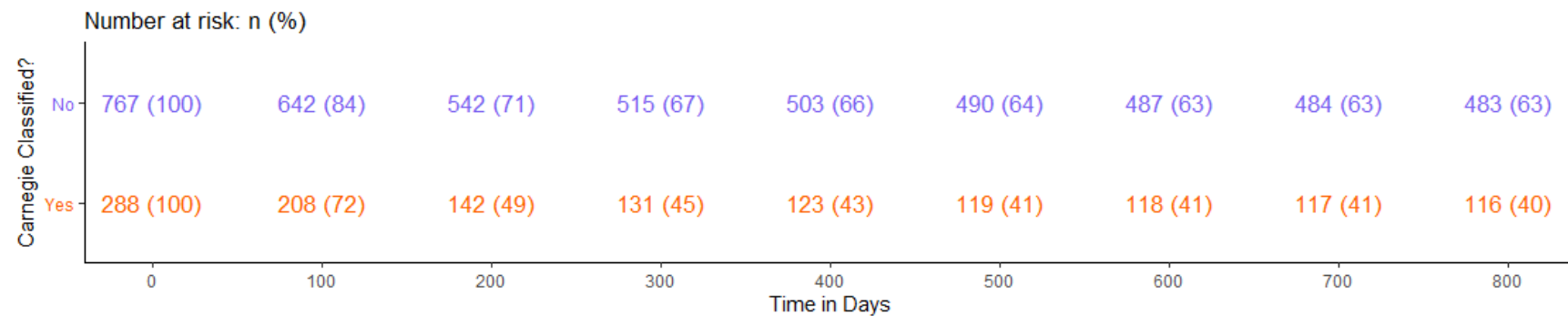
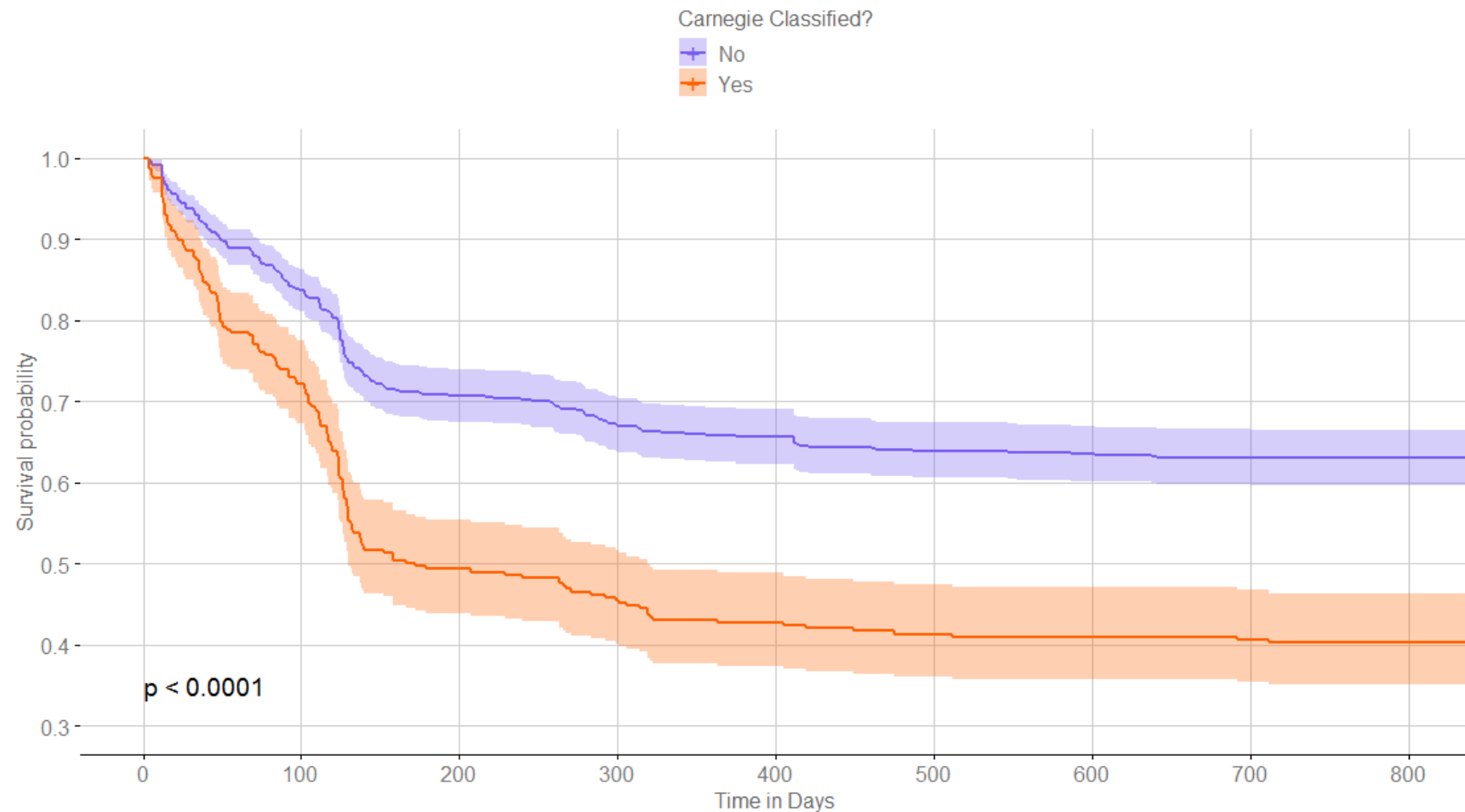




Findings

KM Curves by Carnegie CE Classification

Model 1

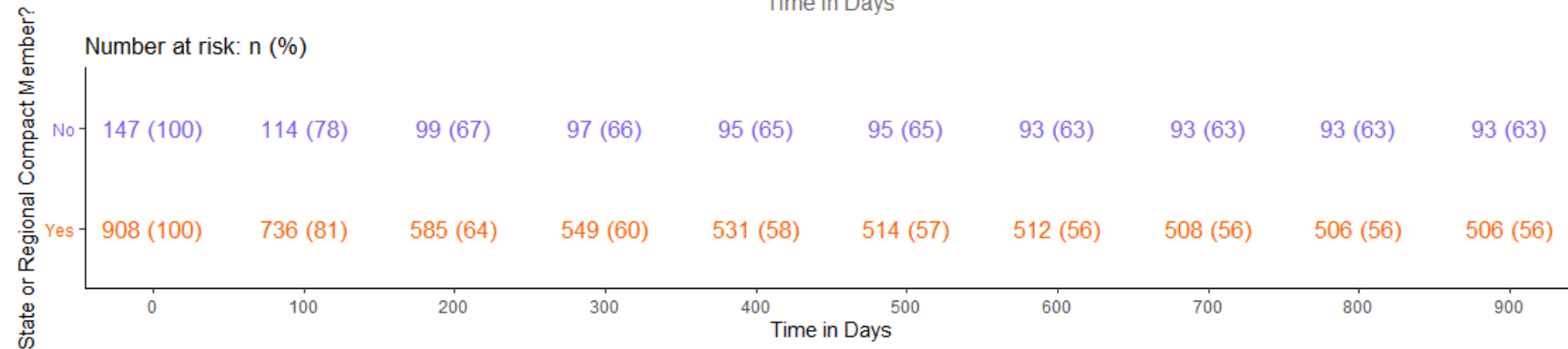
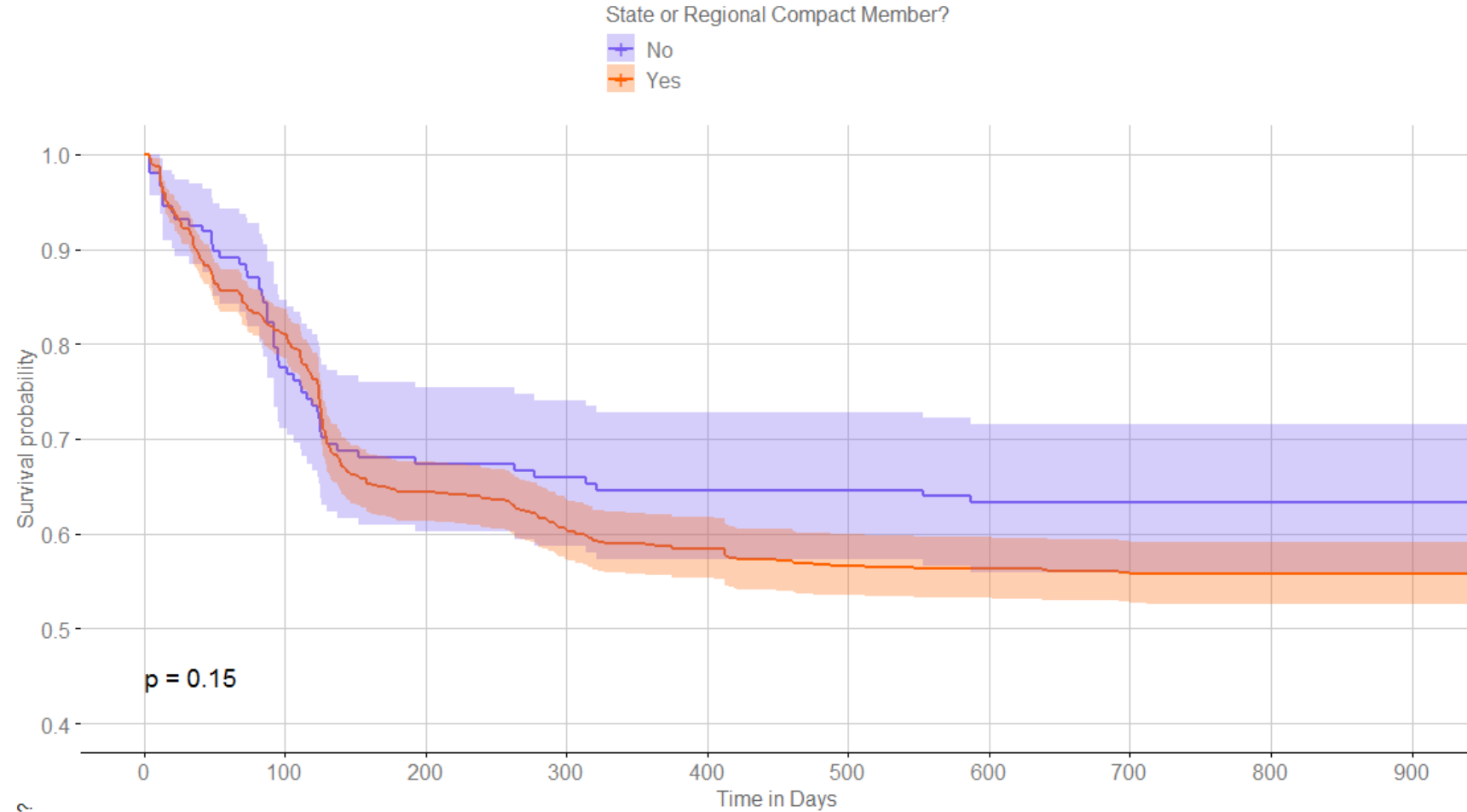




Findings

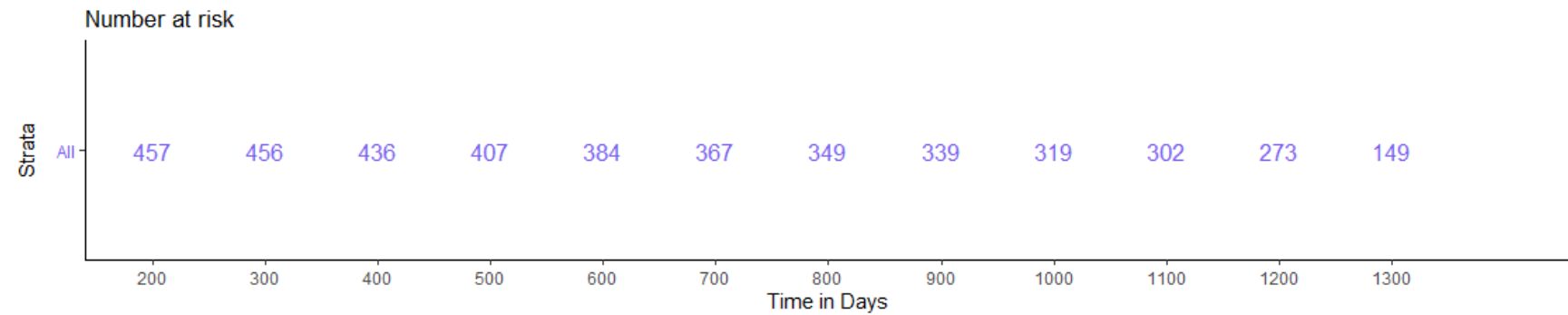
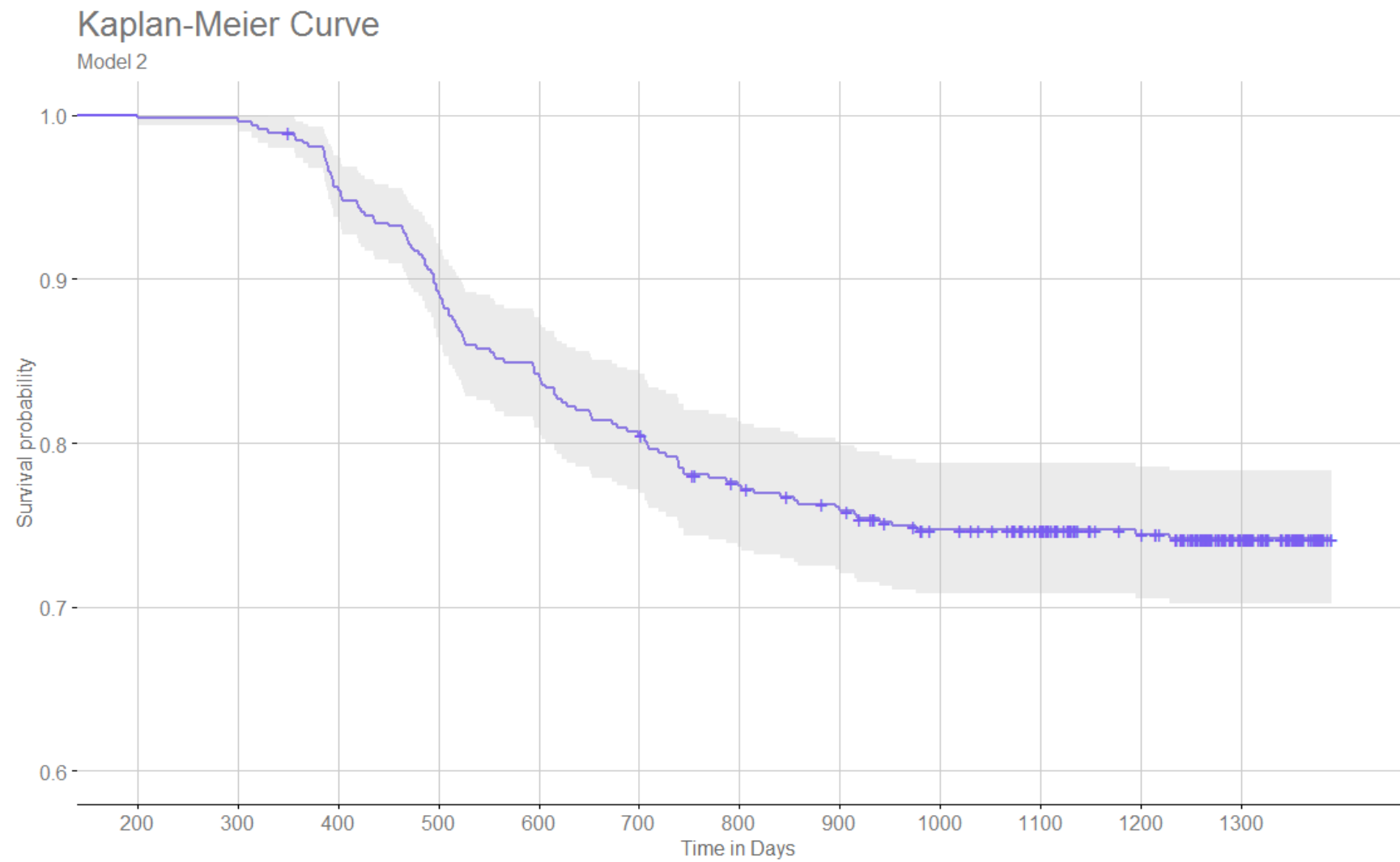
KM Curves by State/Regional Compact

Model 1





Findings

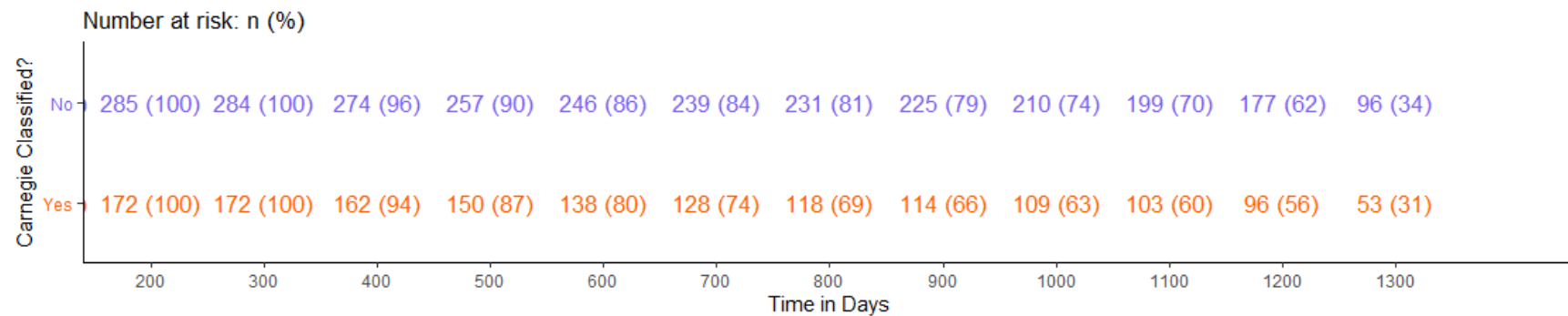
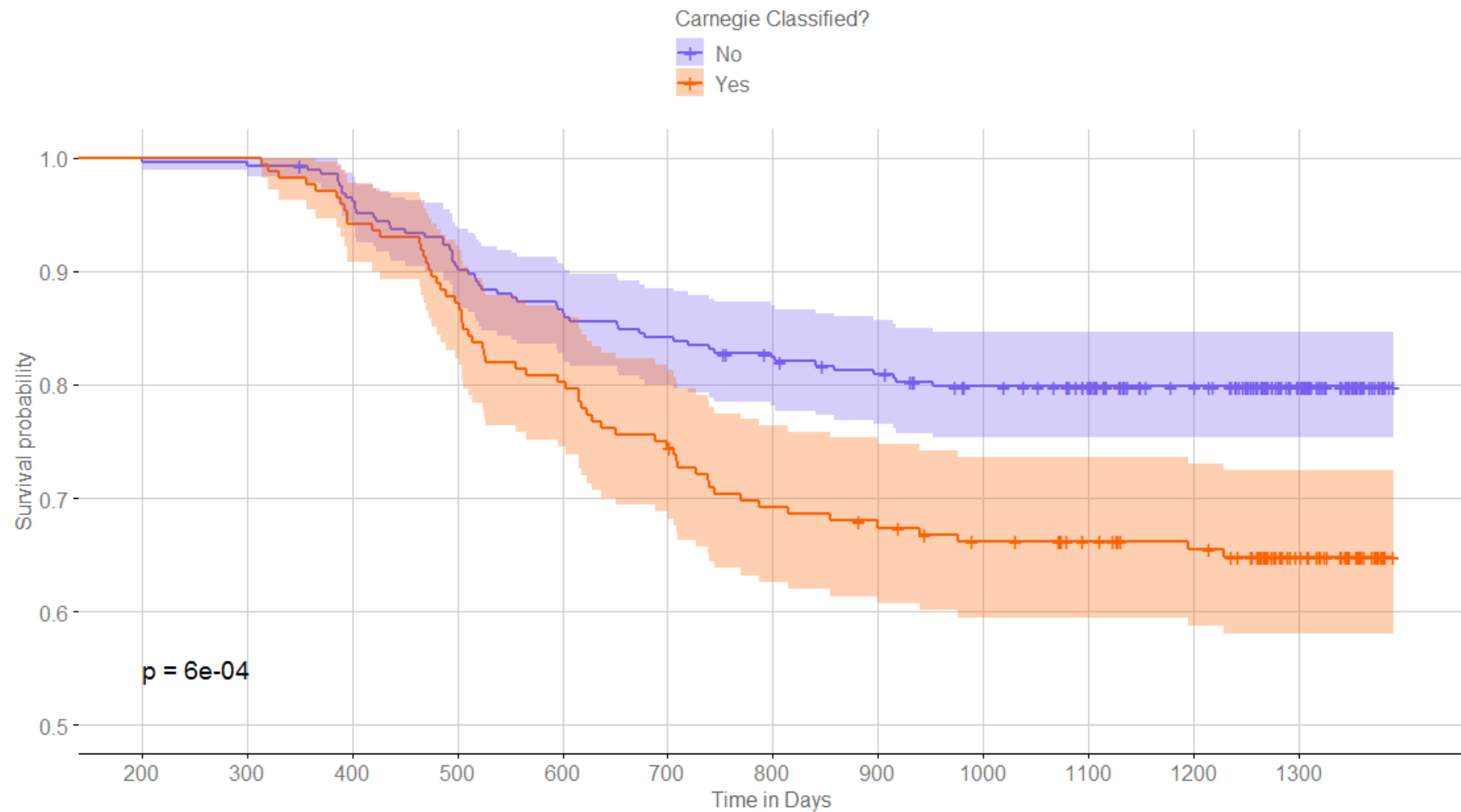




Findings

KM Curves by Carnegie CE Classification

Model 2

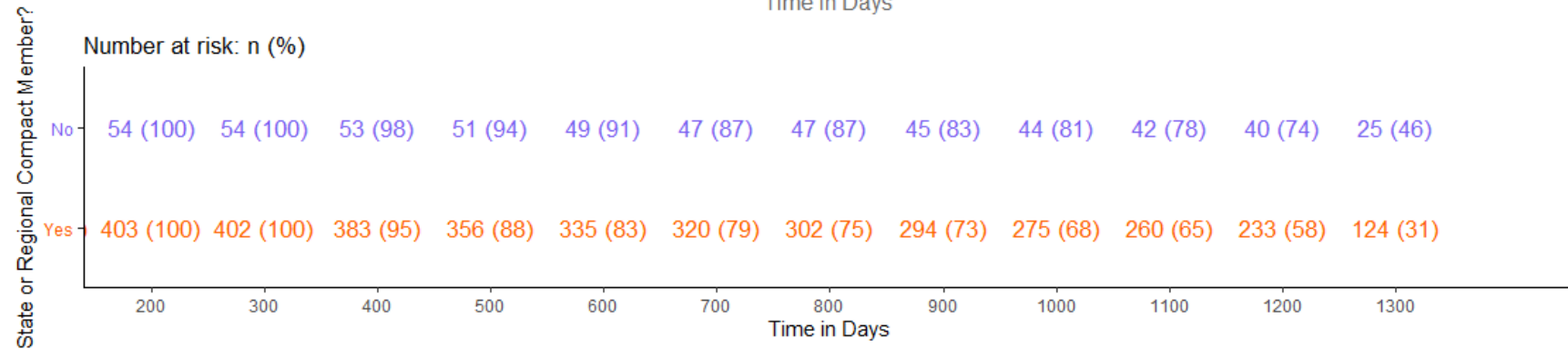
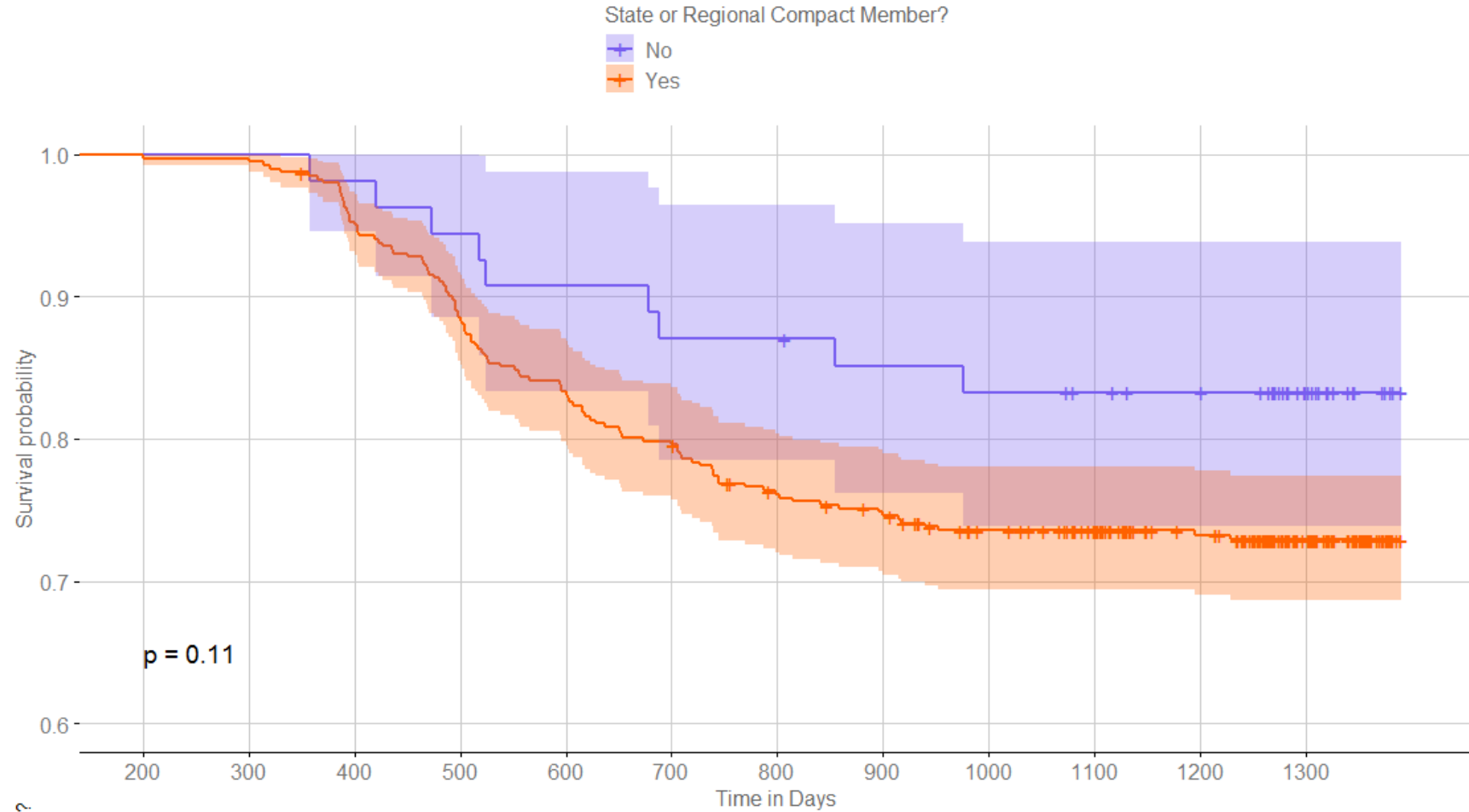




Findings

KM Curves by State/Regional Compact

Model 2



Discussion



Further support that there is alignment with the Carnegie Community Engagement Classification



Our analyses suggest that there are several other factors that influence Civic Action Planning decisions



Motivations to sign the Reaffirmation Statement vs. motivations to complete a Civic Action Plan?

Thank You!

Drew Pearl

Director of Community Engagement Research and Publications
apearl@ua.edu

CeeCee Johnson

Graduate Research Assistant
tejohnson2@crimson.ua.edu