



# ENGAGING THE COMMUNITY ONE SMALL STEP AT A TIME

community design solutions  
university of wisconsin-milwaukee  
school of architecture and urban planning  
presented by kristy bokelman

## INTRODUCTION

- Student based design consultation firm within the School of Architecture and Urban Planning at UWM
- Initiated in 2000 by Dean Bob Greenstreet as part of the Milwaukee Idea Project
- Broadens students educational experience without conflicting with professional practice
- Provides conceptual design services in response to requests from community
- Powerful reputation throughout the state of Wisconsin
- Through its evolution, CDS has gained many repeat clients and long time partnerships such as :
  - City of Milwaukee (Department of City Development / DCD)
  - Layton Boulevard West Neighbors
  - Riverworks Redevelopment Corporation
  - Additional local neighborhood organizations

engaging the community one small step at a time

community design solutions  
university of wisconsin-milwaukee  
school of architecture and urban planning  
presented by kristy bokelman

## MISSION

To improve the quality of life in Wisconsin through physical change to the environment and refinement of decision making processes affecting the environment.



engaging the community one small step at a time  
community design solutions  
university of wisconsin-milwaukee  
school of architecture and urban planning  
presented by kristy bokelman



## OBJECTIVES

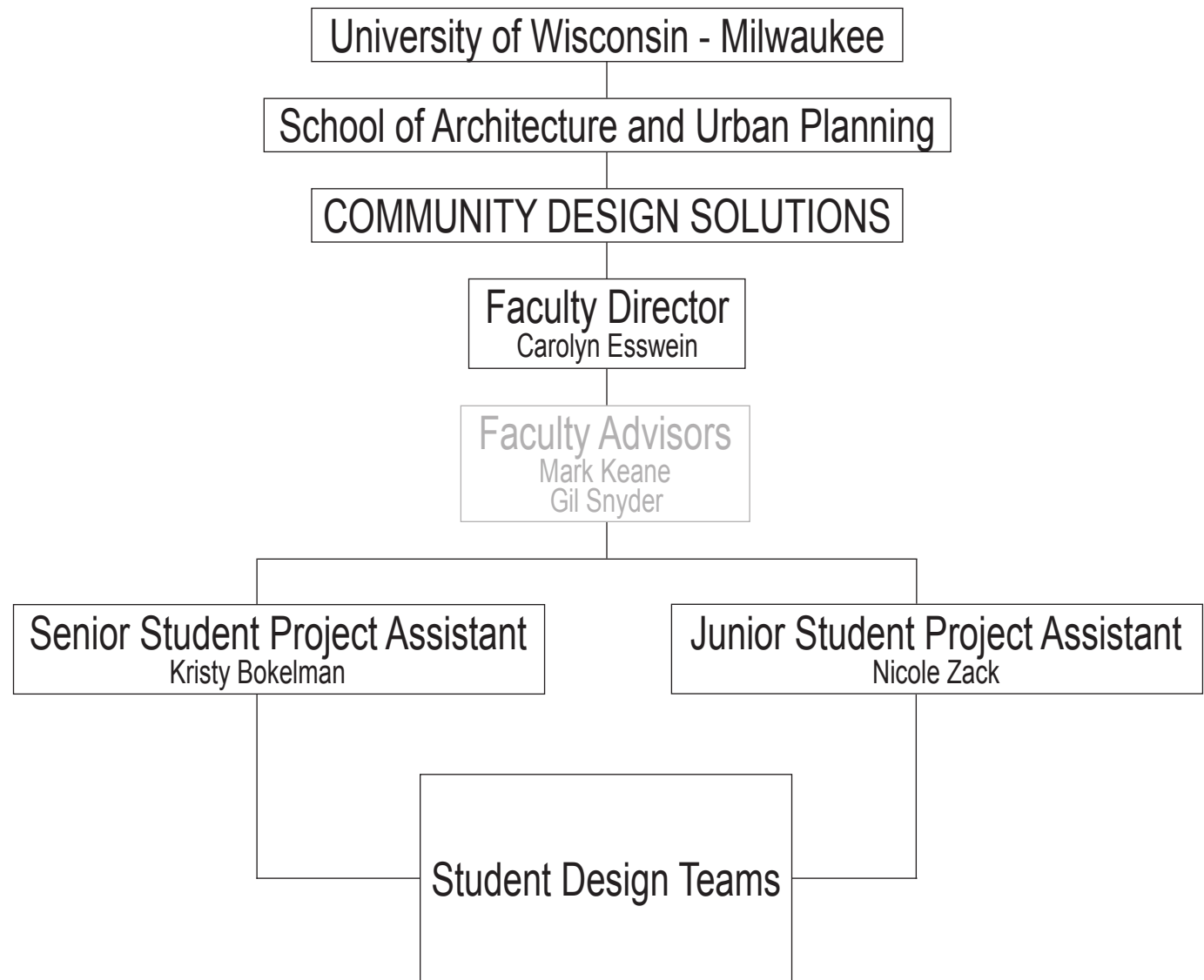
- Be a catalyst for positive physical change in areas that have insufficient access to design and planning services and to the campuses in the UW system
- Form partnerships that promote our mission
- Stimulate funding and construction where they are most needed
- Inform and stimulate the existing design and construction process
- Engage the community whenever possible to empower residents



engaging the community one small step at a time  
community design solutions  
university of wisconsin-milwaukee  
school of architecture and urban planning  
presented by kristy bokelman



## STRUCTURE OF CDS



engaging the community one small step at a time  
community design solutions  
university of wisconsin-milwaukee  
school of architecture and urban planning  
presented by kristy bokelman

## PROJECT CASE STUDIES

*Large scale urban master planning -*

### **WAUSAU NORTHEAST RIVERFRONT SUSTAINABLE MASTER PLAN :**

Reuniting the River and the City

*Historic renovation and adaptive reuse -*

### **MASONIC TEMPLE :**

Revitalization of a building and community in need

engaging the community one small step at a time

community design solutions  
university of wisconsin-milwaukee  
school of architecture and urban planning  
presented by kristy bokelman



# WAUSAU NORTHEAST RIVERFRONT SUSTAINABLE MASTER PLAN



*Location :* Wausau, Wisconsin (north central Wisconsin)

*Client :* City of Wausau, Wisconsin

*Population :* 40,000

*Project Description :*

- Reclaim a 16 acre brownfield site along the Wisconsin River to create a connection to the city, in particular, Wausau's main commercial streets
- Consider adaptive re-purposing of existing derelict structures and material found throughout the site
- Propose environmental improvements within the landscape (soil remediation, bioswales, etc.) as well ecologically minded new construction
- Connect with the residents by conducting a series of community based design charettes and design presentations



engaging the community one small step at a time

community design solutions  
university of wisconsin-milwaukee  
school of architecture and urban planning  
presented by kristy bokelman



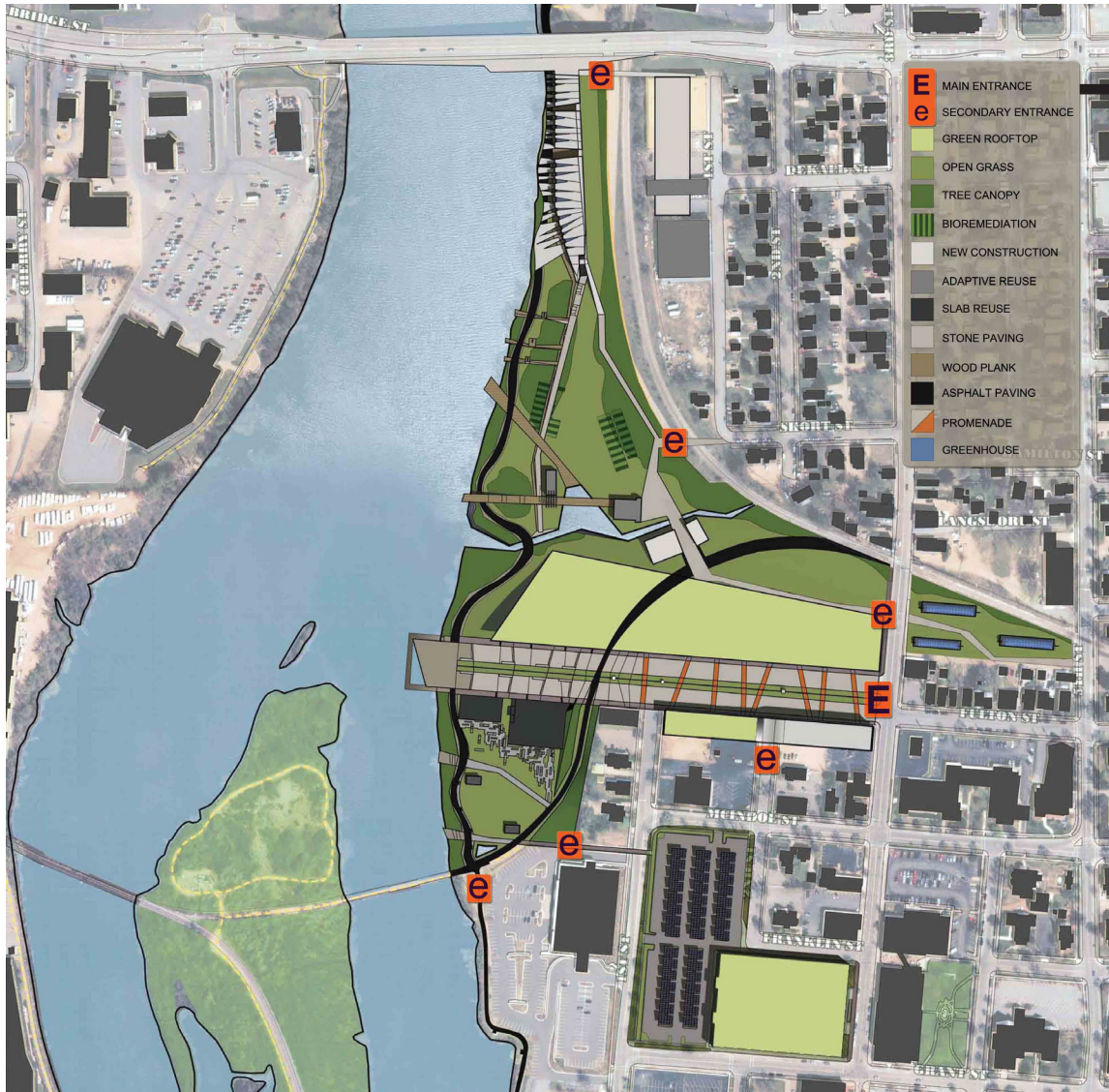
# WAUSAU NORTHEAST RIVERFRONT SUSTAINABLE MASTER PLAN



engaging the community one small step at a time  
community design solutions  
university of wisconsin-milwaukee  
school of architecture and urban planning  
presented by kristy bokelman



# WAUSAU NORTHEAST RIVERFRONT SUSTAINABLE MASTER PLAN



engaging the community one small step at a time  
 community design solutions  
 university of wisconsin-milwaukee  
 school of architecture and urban planning  
 presented by kristy bokelman

# WAUSAU NORTHEAST RIVERFRONT SUSTAINABLE MASTER PLAN



engaging the community one small step at a time  
community design solutions  
university of wisconsin-milwaukee  
school of architecture and urban planning  
presented by kristy bokelman



# WAUSAU NORTHEAST RIVERFRONT SUSTAINABLE MASTER PLAN



engaging the community one small step at a time  
community design solutions  
university of wisconsin-milwaukee  
school of architecture and urban planning  
presented by kristy bokelman

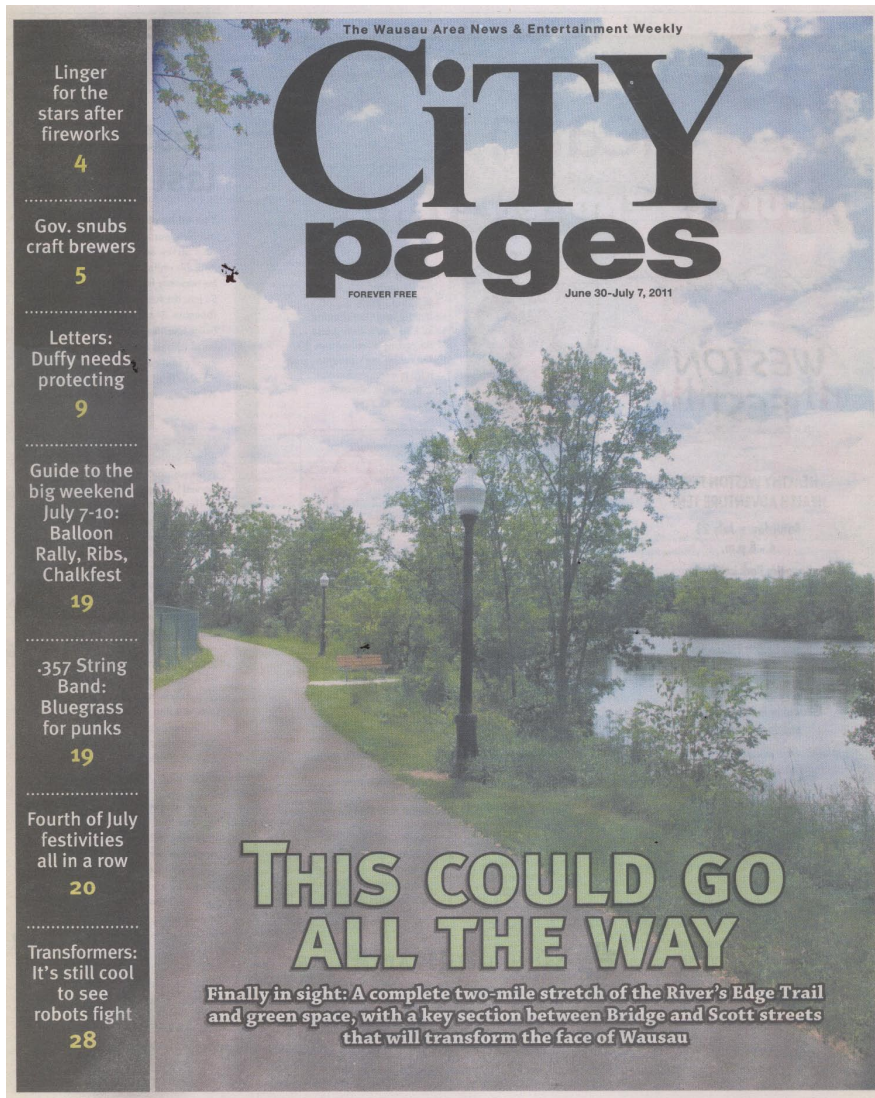
# WAUSAU NORTHEAST RIVERFRONT SUSTAINABLE MASTER PLAN



engaging the community one small step at a time  
community design solutions  
university of wisconsin-milwaukee  
school of architecture and urban planning  
presented by kristy bokelman



# WAUSAU NORTHEAST RIVERFRONT SUSTAINABLE MASTER PLAN



## Wausau North East Riverfront Masterplan | Wausau Wisconsin | Community Design Solutions

By Damian Holmes on February 28, 2012



As the next step in a planning process begun in the mid 1970's, the vision presented here is a proposal for the revitalization of the Northeast Riverfront District, the City of Wausau's former industrial land along the Wisconsin River. Prior to this, the City had substantially developed its plan for the central downtown and completed its purchase of most of the long dormant Northeast Riverfront District. At the next stage, the City hired a team of graduate student architects and planners with UW-Milwaukee's Community Design Solutions (CDS) to adopt relevant recommendations from previous plans, integrate input from the community, and apply their skills and knowledge of modern design principles to create an urban landscape vision that stimulates further public input, planning, and decision-making. City officials and City Planner Brad Lenz had decided to bring an outside student group in for this project to provide fresh eyes for the task of creatively revitalizing a landscape that for so long had symbolized Wausau's industrial decline.



engaging the community one small step at a time

community design solutions

university of wisconsin-milwaukee

school of architecture and urban planning

presented by kristy bokelman

# MASONIC TEMPLE HISTORIC PRESERVATION + ADAPTIVE REUSE



*Location :* Milwaukee, Wisconsin (Riverwest neighborhood)

*Client :* Gingerbread Land + Love Tabernacle Church

*Population :* 600,000

*Project Description :*

- Renovation and adaptive reuse of a condemned historic temple to a community center located in the heart of a low income neighborhood
- Assess the condition of the existing building and propose steps to mitigate code violations
- Identify amenities within the project and propose a long term addition for an elderly care facility
- Assist the client with fund-raising and tax credit options including a phasing plan for future growth

engaging the community one small step at a time  
community design solutions  
university of wisconsin-milwaukee  
school of architecture and urban planning  
presented by kristy bokelman



## MASONIC TEMPLE



engaging the community one small step at a time  
community design solutions  
university of wisconsin-milwaukee  
school of architecture and urban planning  
presented by kristy bokelman



## MASONIC TEMPLE

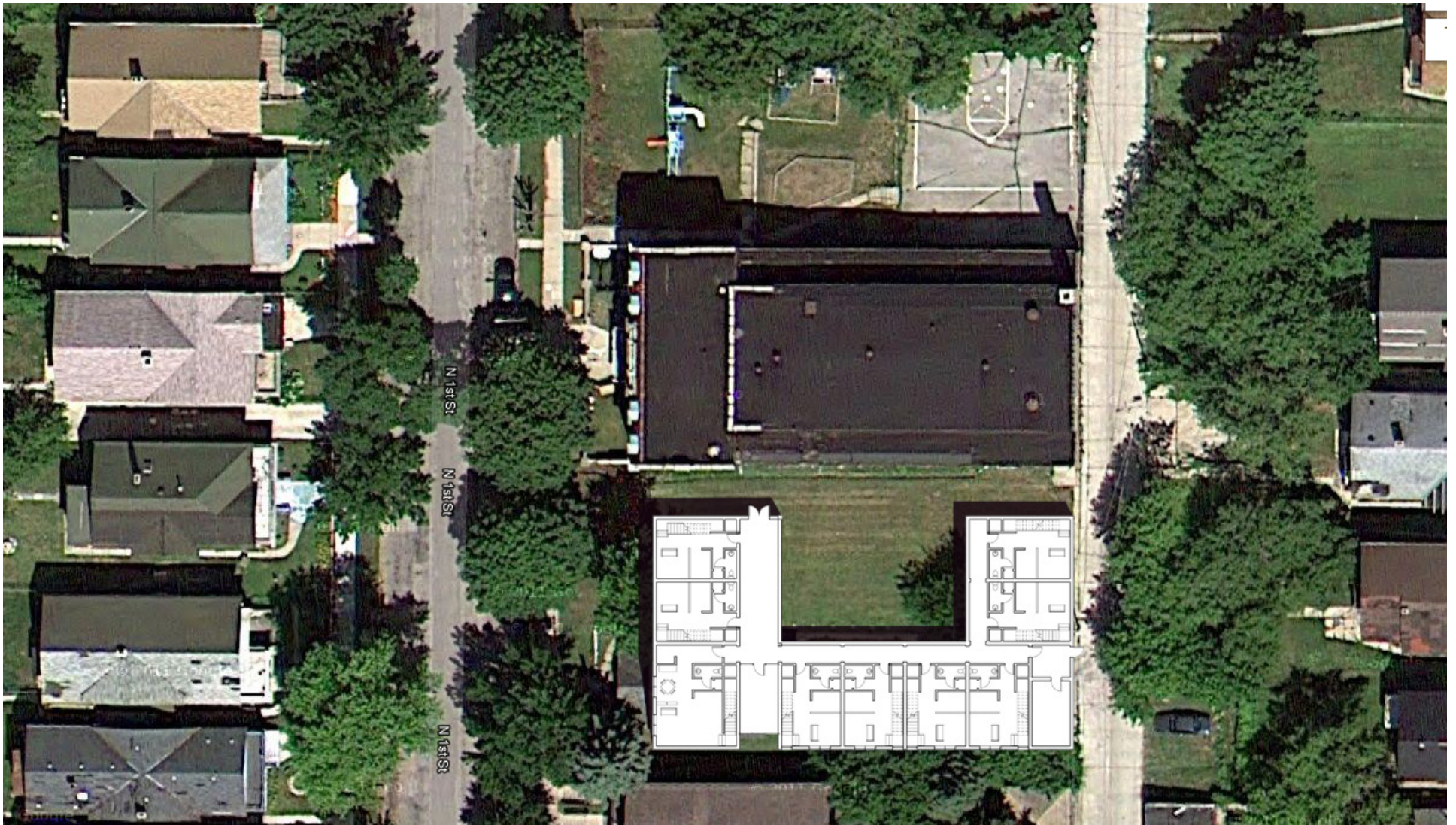


engaging the community one small step at a time

community design solutions  
university of wisconsin-milwaukee  
school of architecture and urban planning  
presented by kristy bokelman



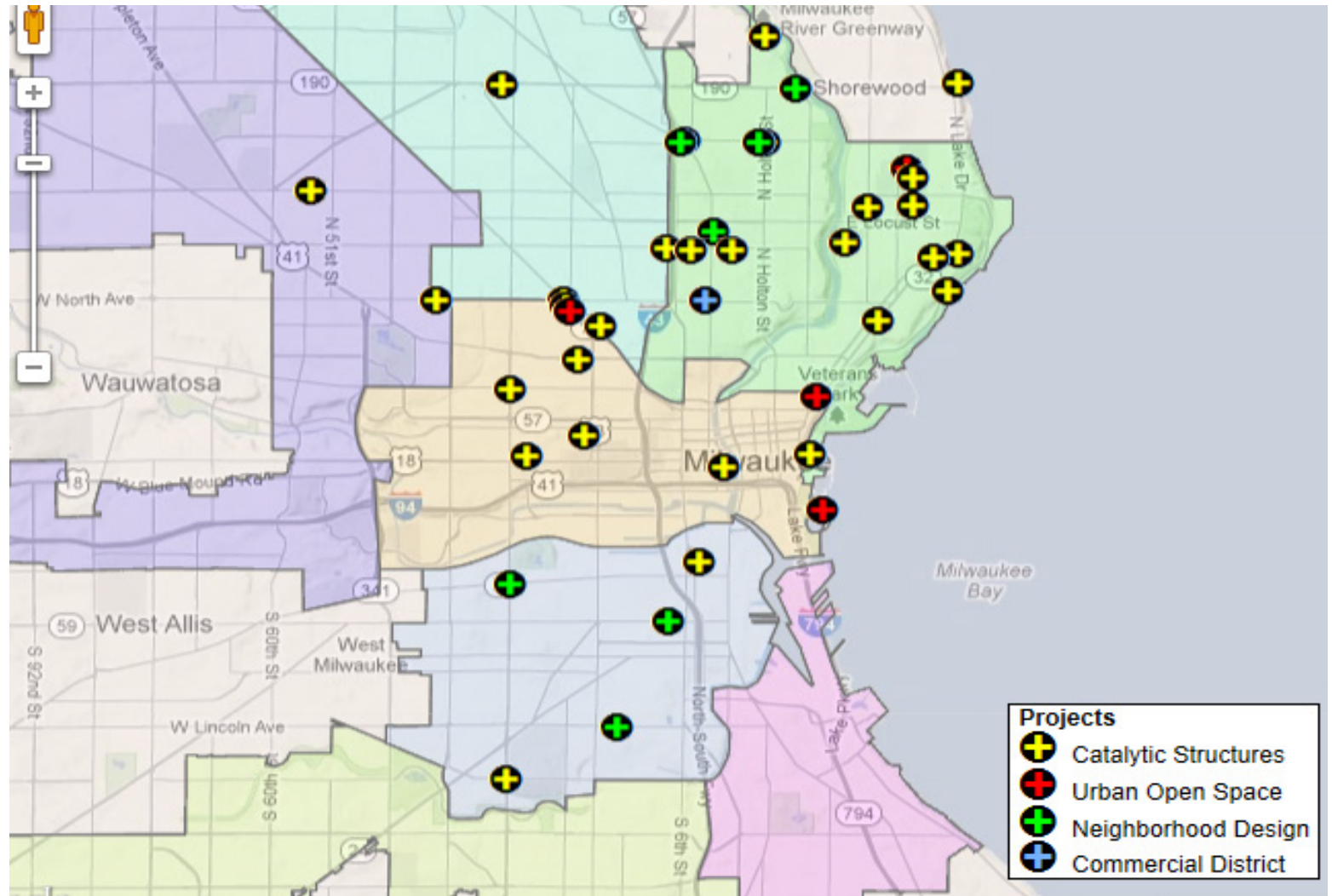
# MASONIC TEMPLE



engaging the community one small step at a time  
community design solutions  
university of wisconsin-milwaukee  
school of architecture and urban planning  
presented by kristy bokelman



CDS IN THE CITY Community Design Solutions has engaged over 200 students and been involved with over 150 projects during its 12-1/2 years of existence.



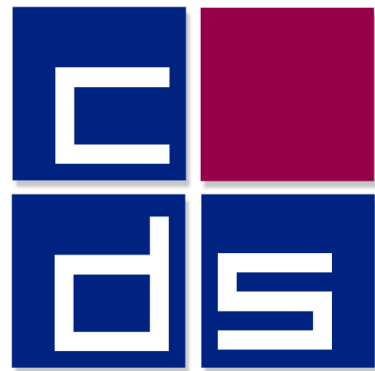
engaging the community one small step at a time  
community design solutions  
university of wisconsin-milwaukee  
school of architecture and urban planning  
presented by kristy bokelman



QUESTIONS?

Thank you to the NOSC committee for the opportunity to present the work we are passionate about.

[www.uwm.edu/cds](http://www.uwm.edu/cds)



engaging the community one small step at a time

community design solutions  
university of wisconsin-milwaukee  
school of architecture and urban planning  
presented by kristy bokelman