

Community Voice: Transforming Systems Through University-Community Partnerships



Angela Waters Austin
National Outreach Scholarship Conference
Michigan State University Kellogg Center
Sunday, October 2, 2011

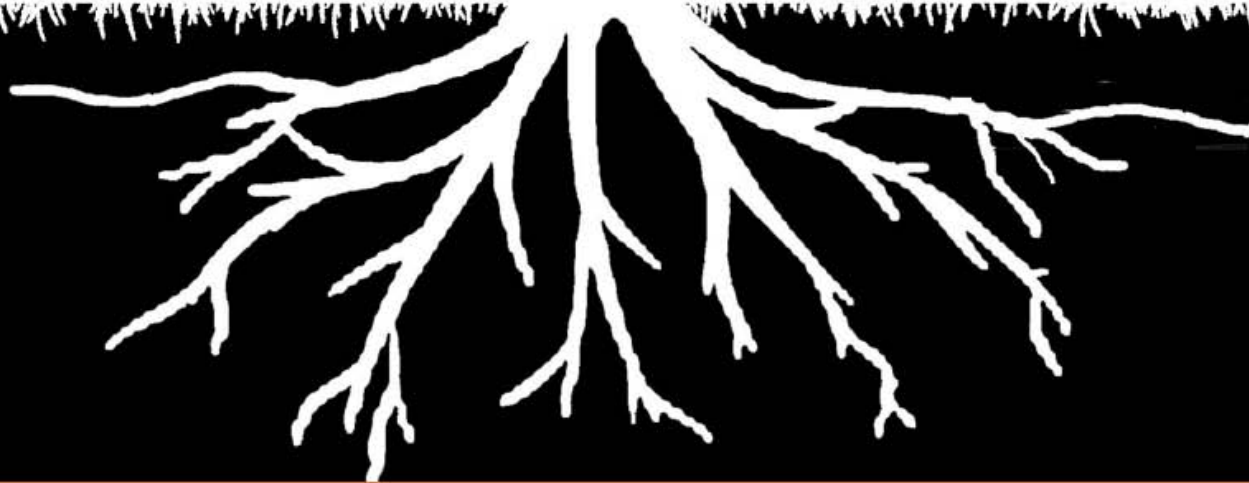
- Creative
- Innovator
- Planter
- Organizer
- Strategist
- Transplant
- Connector
- Entrepreneur
- Woman
- "Minority"



Who am I and why does it matter?



A Higher Calling



We plant seeds that build economic security and sustainability from the 'roots.'

PROBLEM

Break transgenerational
cycles of poverty and
trauma

GOALS

Sustainable
economic
independence across
generations

Preparing young
people for civic and
community
leadership

PATHWAYS TO CHANGE

Social
Entrepreneurship

Education

Leadership
Development

OBJECTIVES

Increased support
and resources for
disadvantaged
teens and young
adults

Increased access
to asset-building
opportunities and
business
ownership

Reduction in
barriers to high-
quality education
and training

Increased
capacity of
community and
faith based
organizations

One Love Global Theory of Change

FOR
LEASE

G

327.8

G

IE

IE

IE

IE

IE

IE

IE

IE

IE

IE

IE

IE

IE

IE

IE

IE

IE

IE

IE

IE

IE

IE

IE

IE

IE

IE

IE

IE

IE

IE

IE

IE

IE

IE

IE

IE

IE

IE

IE

IE

IE

IE

IE

IE

IE

IE

IE

IE

IE

IE

IE

IE

IE

IE

IE

IE

IE

IE

IE



Ingham
County
Youth
Commission

Ingham
Substance
Abuse
Prevention
Coalition



Community
Coalition
for
YOUTH



MICHIGAN STATE
UNIVERSITY
EXTENSION

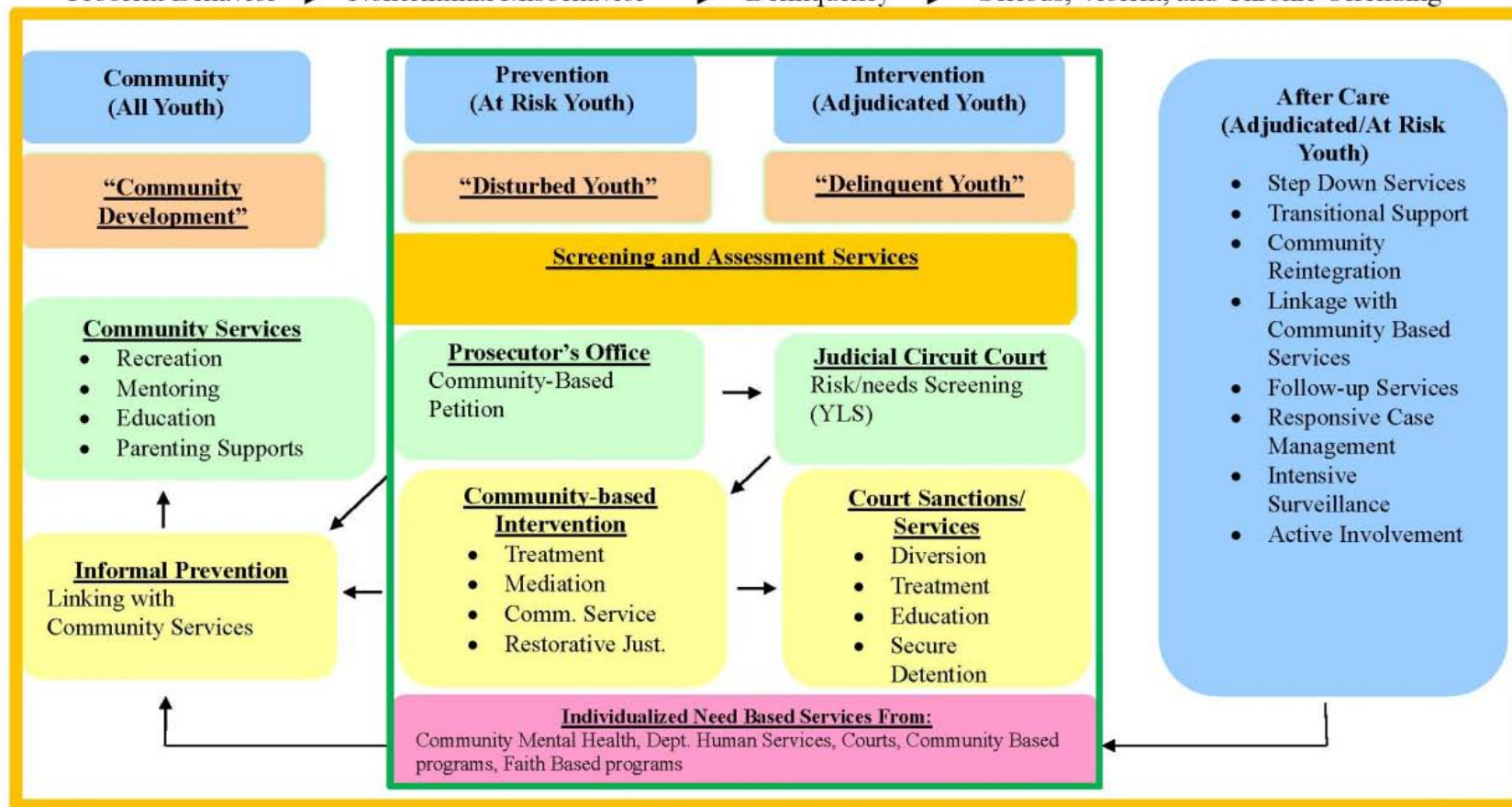


REACH
STUDENT CENTER



Continuum of Care for Youth in Ingham County (Updated 2011) – Problems/Needs

Problem Behavior → Noncriminal Misbehavior → Delinquency → Serious, Violent, and Chronic Offending



EVALUATION

Programs for All Youth → Programs for Youth at Greatest Risk → Immediate Intervention → Intermediate Sanctions → Community Confinement → Training Schools → Aftercare

- = Scope of CCY current efforts to increase supports, reduce risk, and help youth make successful transitions to adulthood
- = Scope of Juvenile Justice Millage currently funded services and Ingham Family Center focused on high-risk, court-involved youth

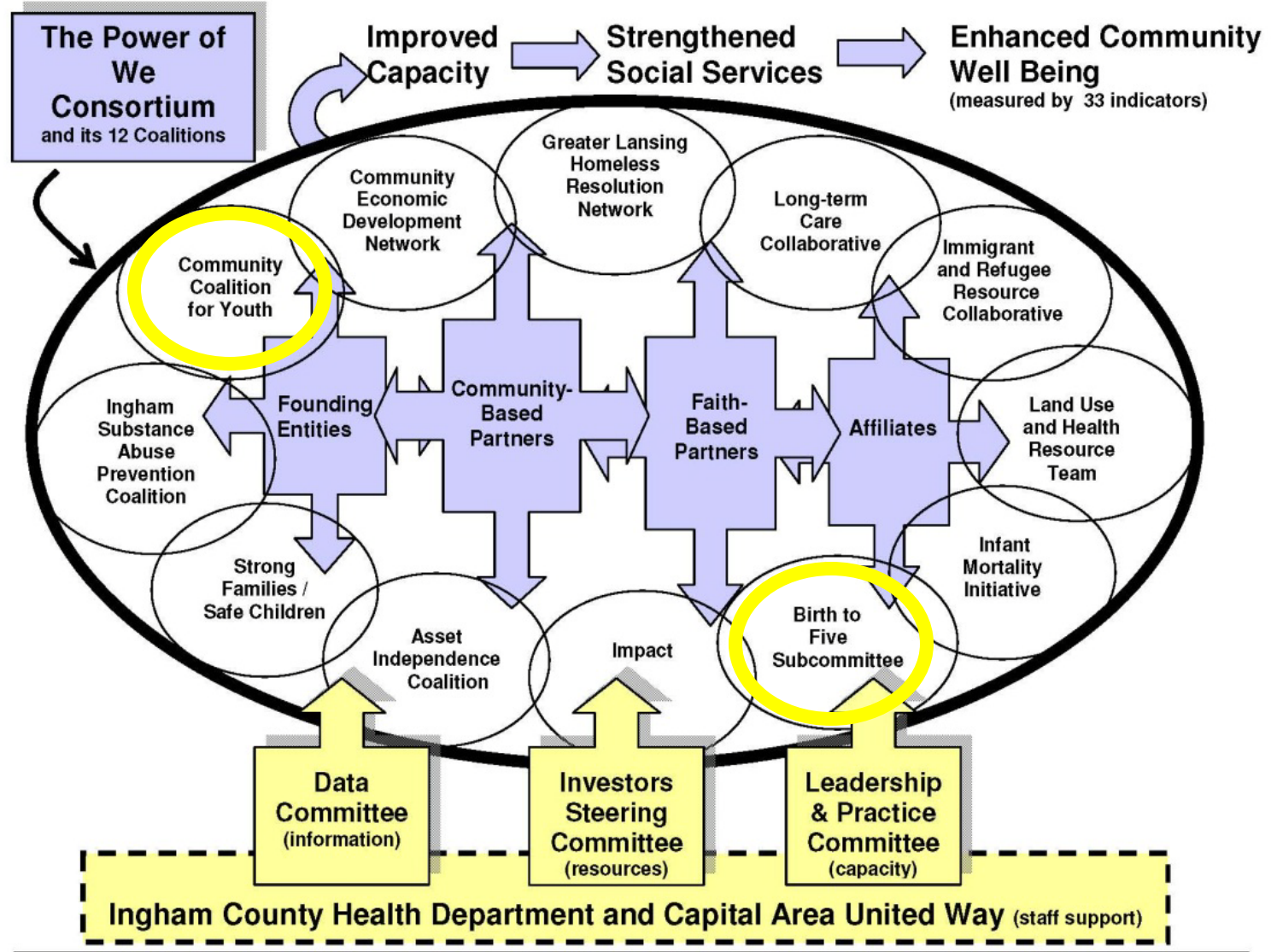


The Power of We™

Strengthening Community Connections for Action



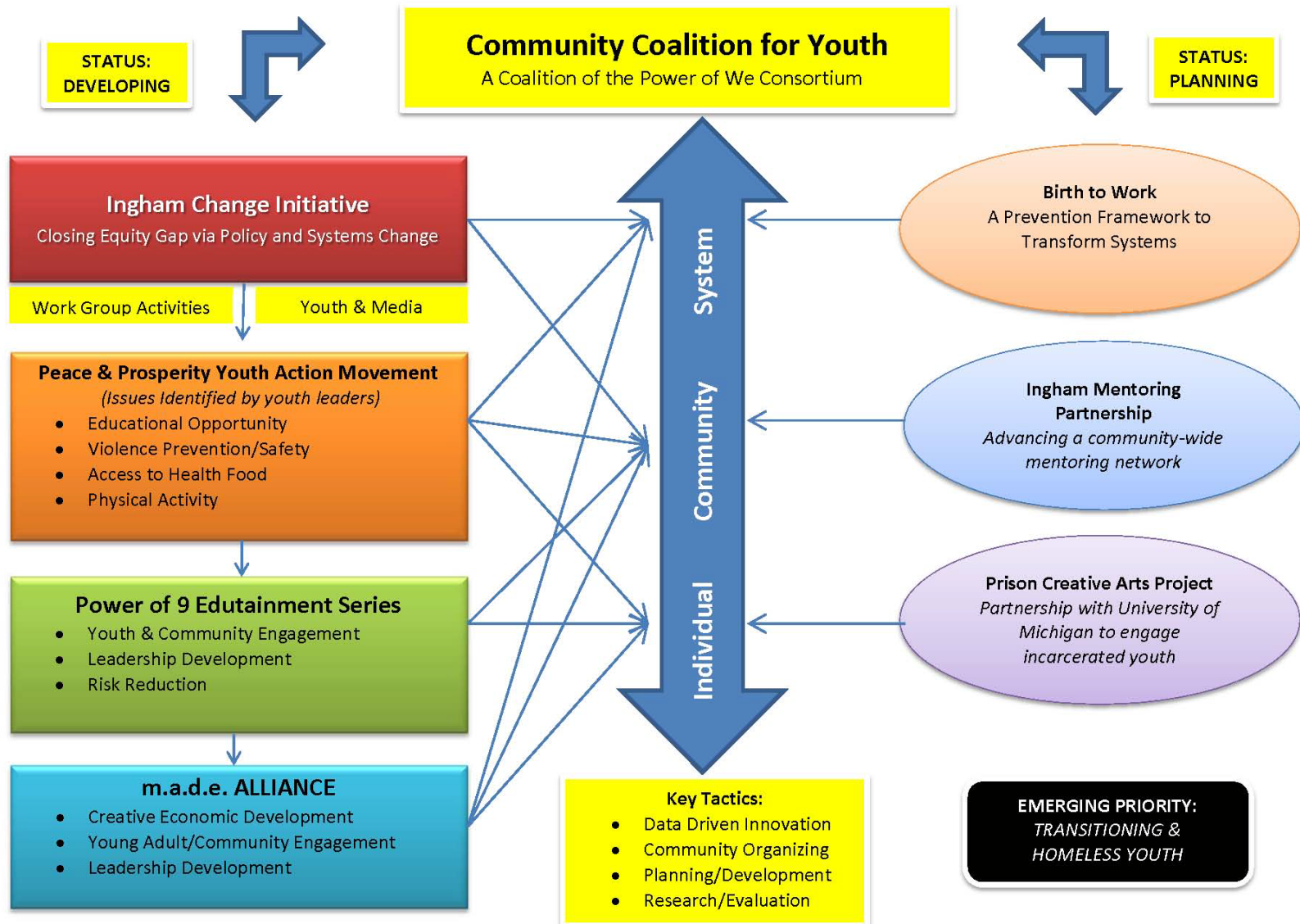
Power of We Consortium Structure





Partnerships with **MICHIGAN STATE UNIVERSITY**

Continuum of Care for Youth in Ingham County – Collective Impact Strategy (June 2011)





**INGHAM
CHANGE
INITIATIVE**



www.inghamchange.org



**INGHAM
CHANGE
INITIATIVE**



MICHIGAN JUVENILE ARREST RATES, 2008



Source: Michigan Uniform Crime Reports

Ingham Change Initiative

43





Youth Action Movement for Social Justice

Peace &
PROSPERITY



Youth Action Movement for Social Justice

Peace &
PROSPERITY



Youth Action Movement for Social Justice

Peace &
PROSPERITY

365-50

Lyric Lee
The Amateur
J Young The General
Lavish
KOM
Jimmy Aint
Hakim Crampton
Urban Diversity

Mizz Reality
NGC
Othello
Big Perm
P2daH
Ward Skillz
Sincere
Sacramento Knox

Lansing Appreciation Week Hip Hop

may.15-21.ten2011

365-50
www.lansinghiphop.org

Lansing
Appreciation Week
Hip Hop
may.15-21.ten2011

m.a.d.e. ALLIANCE, One Love Global Ingham Lansing Community Coalition for Youth Ingham County Board of Commissioners REACH Studio Art Center Art Alley REO Town Commercial Association Artistserve Michigan Gone Wired Cafe Jessica York, Lansing City Council Power of the Consortium Power 96.5 FM The Radisson Hotel City of Lansing Gateway Community Services School-Community Health Alliance of Michigan The Caring Institute Ingham Change Initiative Michigan State University Downtown Capital Area District Library The Time Slot Greater Lansing Business Monthly Capital City DJ Olympics Capital City Film Festival

Sunday **Teen Summit** **Dance**
Gone Wired Cafe
May 15 @ 3pm
2021 E. Michigan Ave
Special Performance by NGC
Underage Drinking

Monday **Samskee DeBourbon** **Graffiti**
REO Town Art Alley
May 16 @ 12pm
133 South Washington Ave
SOPE

Tuesday **"Hip On Runway"** **Fashion Show**
May 17 @ 7pm
Radisson Lansing
Michigan Rooms
111 Grand Avenue

Wednesday **Malcolm's Echo: the Legacy of Malcolm X**
(Running time: 84 min) Documentary and director Dami Akinnusi have several nods including LA Pan African Film Festival Audience Favorite Award, official selection at BET UrbanWorld Film Festival, a nomination for Independent Spirit Award for Best Director at The Screen Nation Awards UK and African Movie Academy Award 2009 (Africa Oscars) - Winner for Best Documentary - Hip Hop Press
Downtown Capital Area District Library
May 18 @ 6:30
133 South Capital Avenue

Featuring Spoken Word Artist:
Hakim

Thursday **CAPITAL CITY Showcase & Clinic** **May 19**
Gone Wired Cafe 5-8pm
2021 E. Michigan Ave family
10pm adults @ The Firm
227 S. Washington Square

Lyric Lee . Mizz Reality . Sincere . Sacramento Knox . Othello . KOM
J Young The General . P.H.I.T.H.Y. . Ward Skillz . Lavish . Big Perm
Lansing Hip Hop SUMMIT
May 21 9pm-1am
Radisson Lansing
111 Grand Avenue
Saturday **adults only**

www.madealliance.org

m.a.d.e.

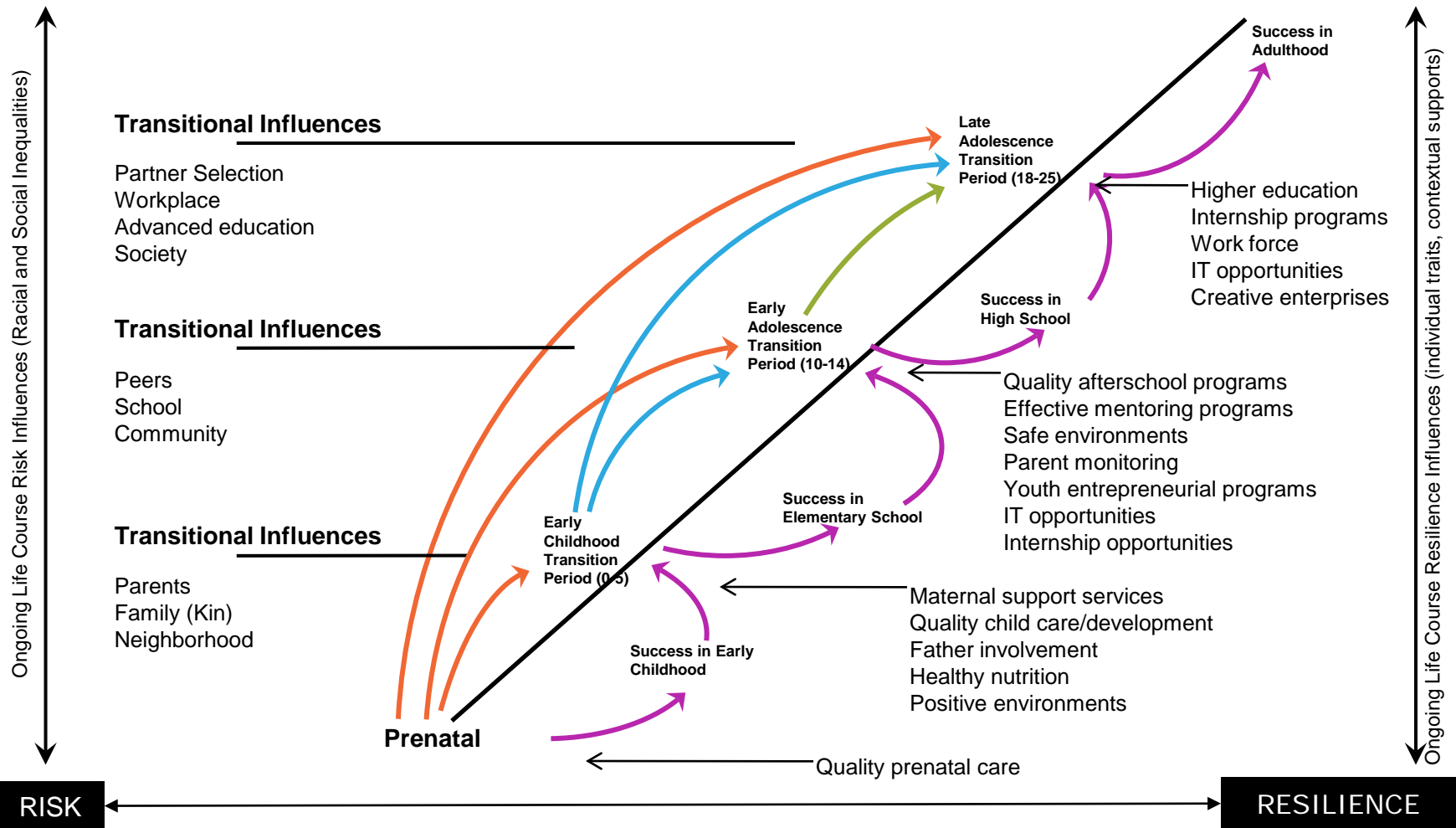


**Lansing Hip Hop
Appreciation Week 2011**



**Lansing Hip Hop
Appreciation Week 2011**

Transitional Periods Across the Life Span: Relationship Impacts and Age Period Program Exemplars





Birth to Work

Michigan Capital Area

- It's an approach to community and systems transformation
- It's about creating innovative solutions to eliminate inequities and disparities





Every discipline of higher education has a knowledge contribution to make to help our children, youth, and young adults in the Capital Area grow up with the skills and abilities to actively participate in the global knowledge economy.



What is Birth to Work?

- It's an *approach* to community transformation
- It's about helping all children, youth, and young adults succeed in the global knowledge economy
- It's about creating innovative solutions for eliminating inequities and disparities



Get Involved

- [Get connected](#) to MSU researchers and community members who share an interest in making the Michigan Capital area *succeed for all*
- [Contact a Guide](#) who can help you with questions about how to create partnerships between MSU and community partners



[Browse all member profiles and get involved](#)



[View Birth to Work guides](#)



JOIN THE DISCUSSION ON FACEBOOK

- Racial Equity
- Policy and Systems Transformation
- Leadership Development
- Creative Entrepreneurship
- Social Innovation
- Nationally Networked Partnerships
- Popular Education
- Community Organizing

oneloveglobal.org

angela@oneloveglobal.org

Our interests for U-C Partnerships